



# ETERNAL

FOR ENGINEERING SERVICES

ETERNAL FOR ENGINEERING SERVICES

إيترنال للتصميمات والاستشارات الهندسية

**WE BUILD WITH VALUE**

# who we are

ETERNAL | Engineering Services provides a wide range of services and has professional staff in different fields. Our expertise is based on the solid technical knowledge of our engineers in the civil and architectural fields.

**WE ARE GLAD TO HAVE YOU ON BOARD!**

**WE BUILD WITH VALUE**



## PREVIOUS EXPERIENCE

ETERNAL | Engineering Services has designed & supervised numerous projects, structures, buildings, different throughout Egypt, Arabian Gulf Area.

Hereby some samples of our projects.

### 1- **STRUCTURAL, MEP DESIGN & SUPERVISION OF PLAZA STRIP PROJECT.**

One of our major achievements is a **PLAZA STRIP** where we were entrusted with complete responsibility for the design and execution of several key components. We managed everything from the **Structural Design** to the **MEP** (Mechanical, Electrical, and Plumbing) Design, ensuring that all systems were integrated seamlessly. Additionally, we oversaw the **supervision** of the entire project, guaranteeing that the work was executed according to the highest standards. This project highlights our ability to handle large-scale, complex projects with precision and efficiency.

#### **Plaza Strip Tourist Walkway (Sadat City – Egypt).**

Plaza is the first & largest tourist walkway in the Delta on an area of 21.000 square meters.

The project consists of 6 separated buildings 3 of them with basement floor & more than 14,000 square meters for landscape areas, roads & parking.  
project value is 60.000.000 L.E.

ETERNAL was responsible for Structural design of projects building, tanks & different landscape shapes. Architectural drawings & shop drawings for the façade & landscape. MEP Design for all the project. Supervising all structural & architectural works in the project.



Plaza Strip 3D View (By Others).

**WE BUILD WITH VALUE**





Work Progress in plaza strip project.



Work Progress in plaza strip project.



Work Progress in plaza strip project.

**WE BUILD WITH VALUE**





Work Progress for landscape in plaza strip project.



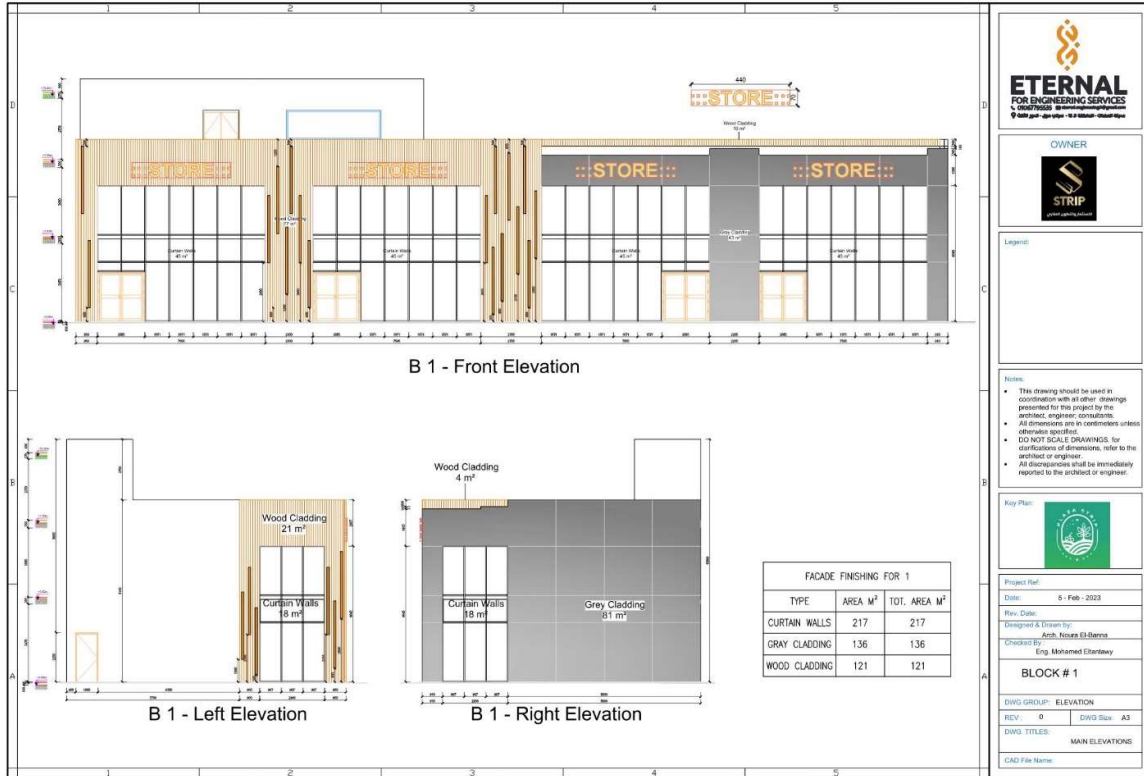
Work Progress for landscape in plaza strip project.



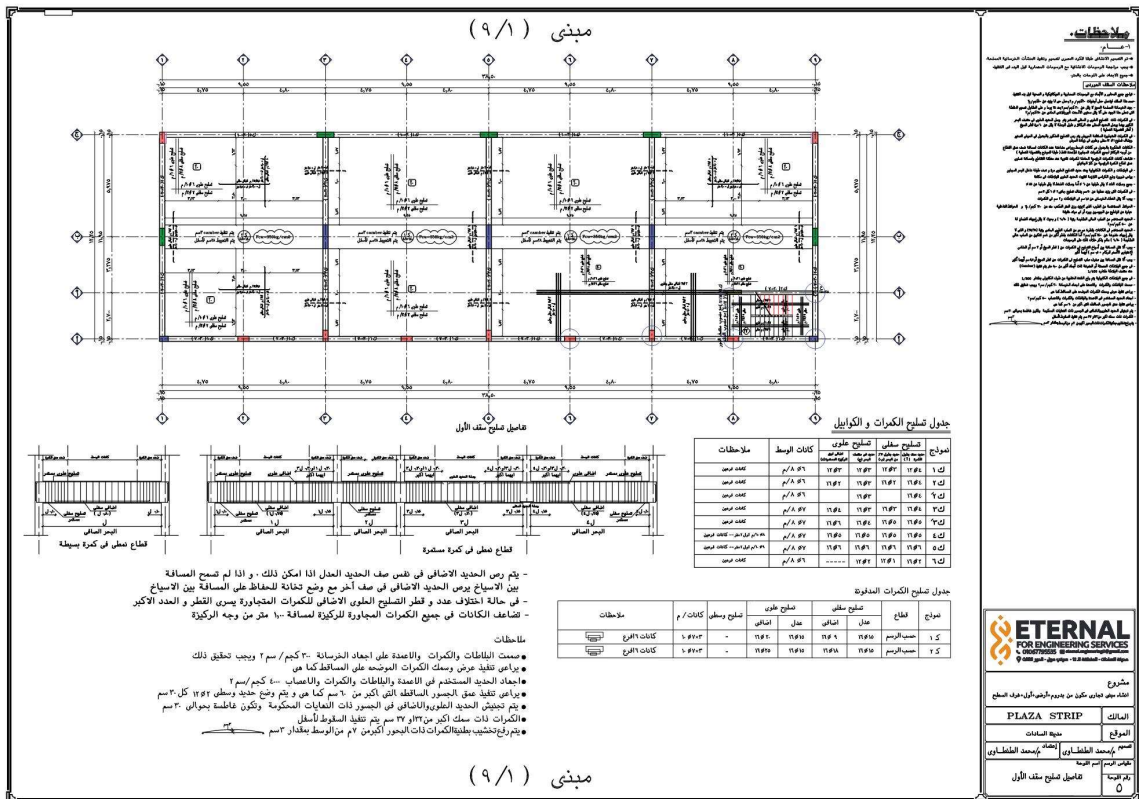
Work Progress for landscape in plaza strip project.

**WE BUILD WITH VALUE**



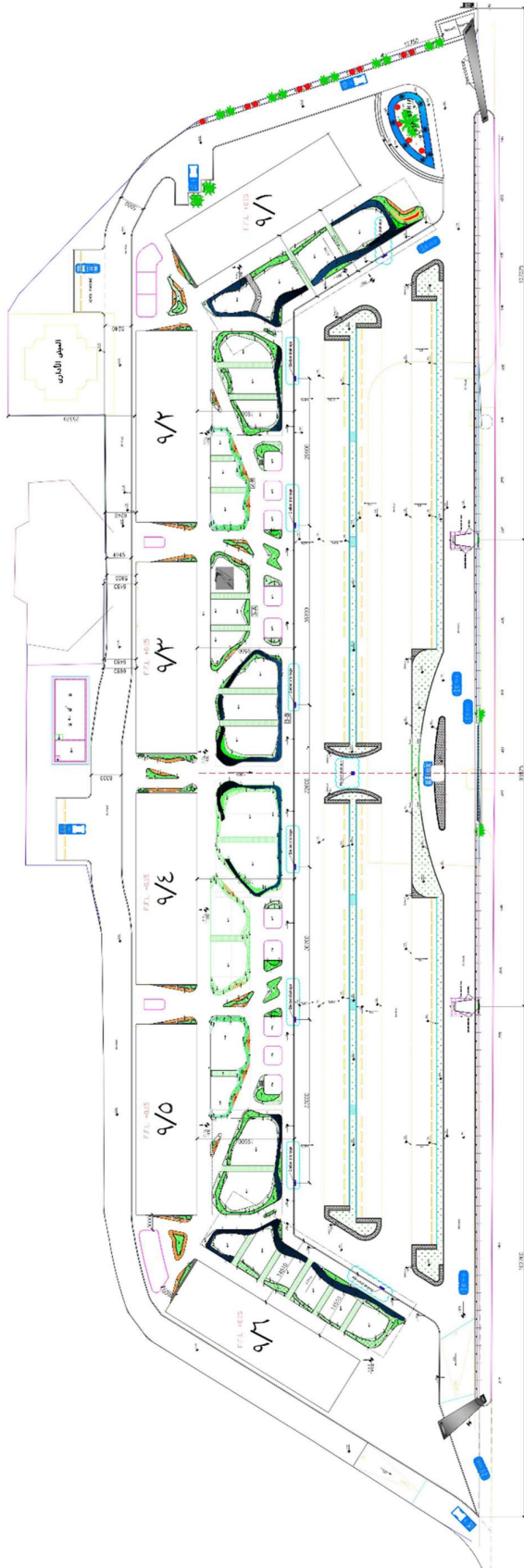


Façade Details (Plaza Strip).

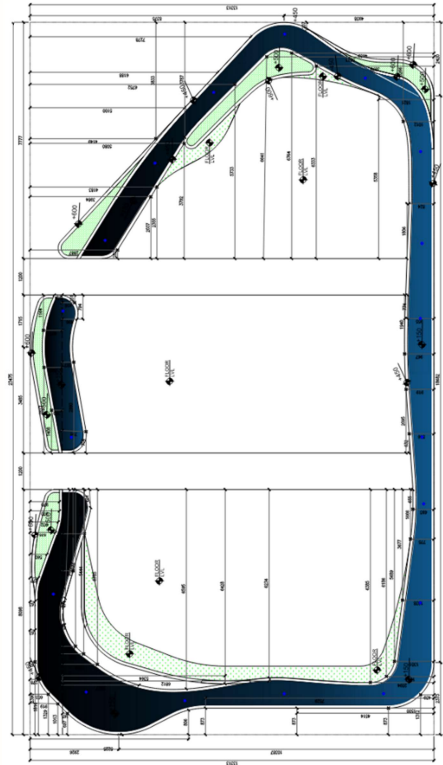


1<sup>st</sup> Floor Structure Details (Plaza Strip).

**WE BUILD WITH VALUE**

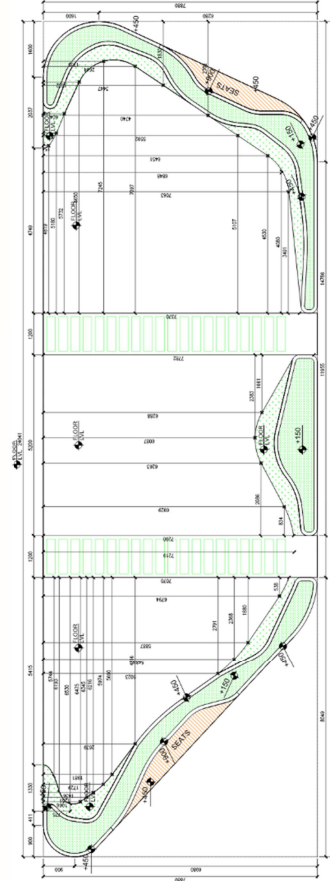


General layout (building, Landscape & parking, Service Roads & Gates (Plaza Strip)).



3-B

Landscape Details. (Plaza Strip).



3-A

Landscape Details. (Plaza Strip).

## 2- STRUCTURAL DESIGN & SHOP DRAWINGS.

Moving on to **Structural Design**, our company has a strong track record of delivering robust and efficient structural solutions across various sectors. We specialize in the design of structural systems for buildings, including residential, commercial, and industrial projects. Our designs are characterized by their durability, safety, and compliance with the latest industry standards.

We pride ourselves on our ability to tackle complex structural challenges, providing innovative solutions that meet the specific requirements of each project. Our team ensures that every design is optimized for both performance and cost-effectiveness, balancing safety with aesthetic and functional considerations.

In addition to design, we also handle **detailed shop drawings** and **as-built documentation**, ensuring that every structural element is meticulously planned and executed.

We have successfully completed structural design projects in various locations, including Saudi Arabia, Libya, and, of course, Egypt. This international experience underscores our capability to deliver high-quality solutions in diverse environments.

**WE BUILD WITH VALUE**

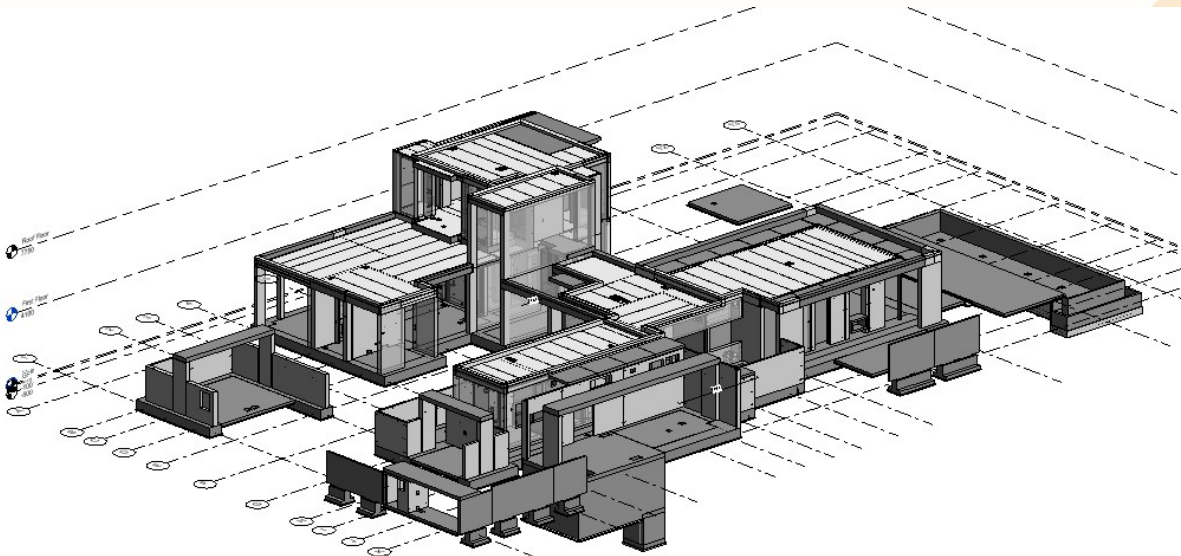


**1- TB-GOLF PRIVATE RESIDENCES (H2) (RED SEA, Saudi Arabia)  
(PRECAST VILLA S.D)**



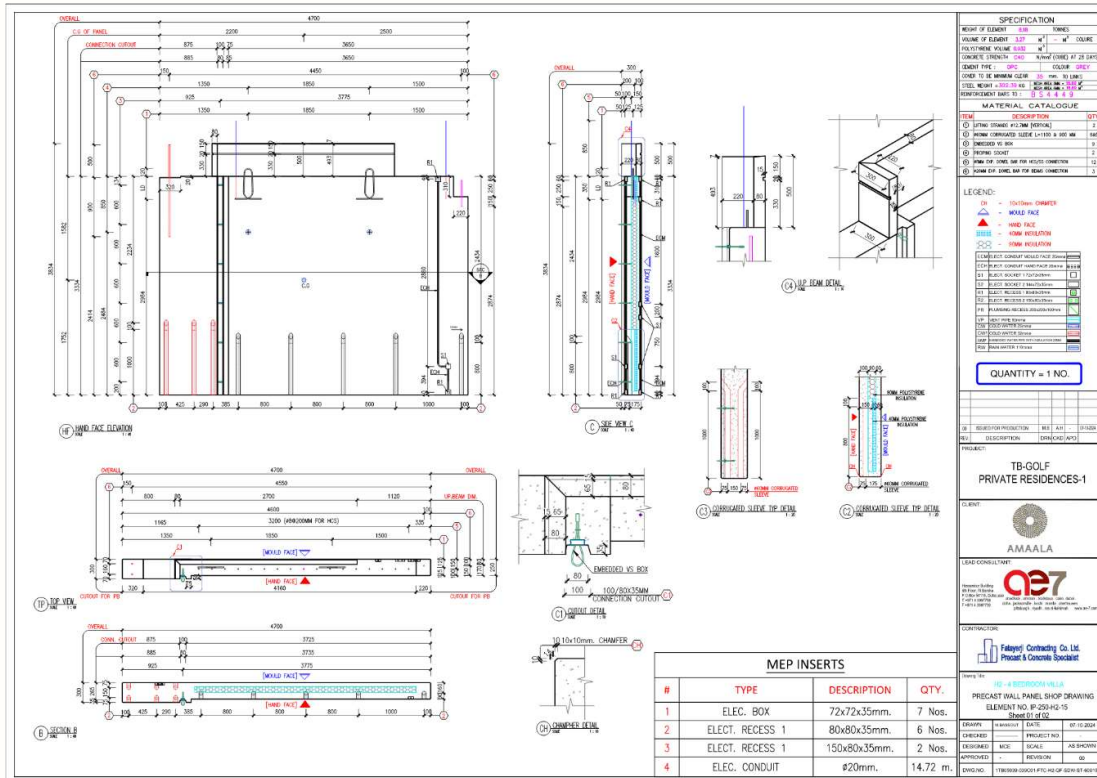
H2 - VILLA

Scope of work is **Preparation of Shop Drawings**: preparation of comprehensive shop drawings that include all required details from both structural and MEP files, providing detailed CAD files showing the quantities and specifications of the various precast elements in the project. and **ERECTION Drawings in CAD Format** Complete General Information Drawings (ERECTION) will be delivered in CAD format, illustrating all the necessary components and specifications of the precast villa.

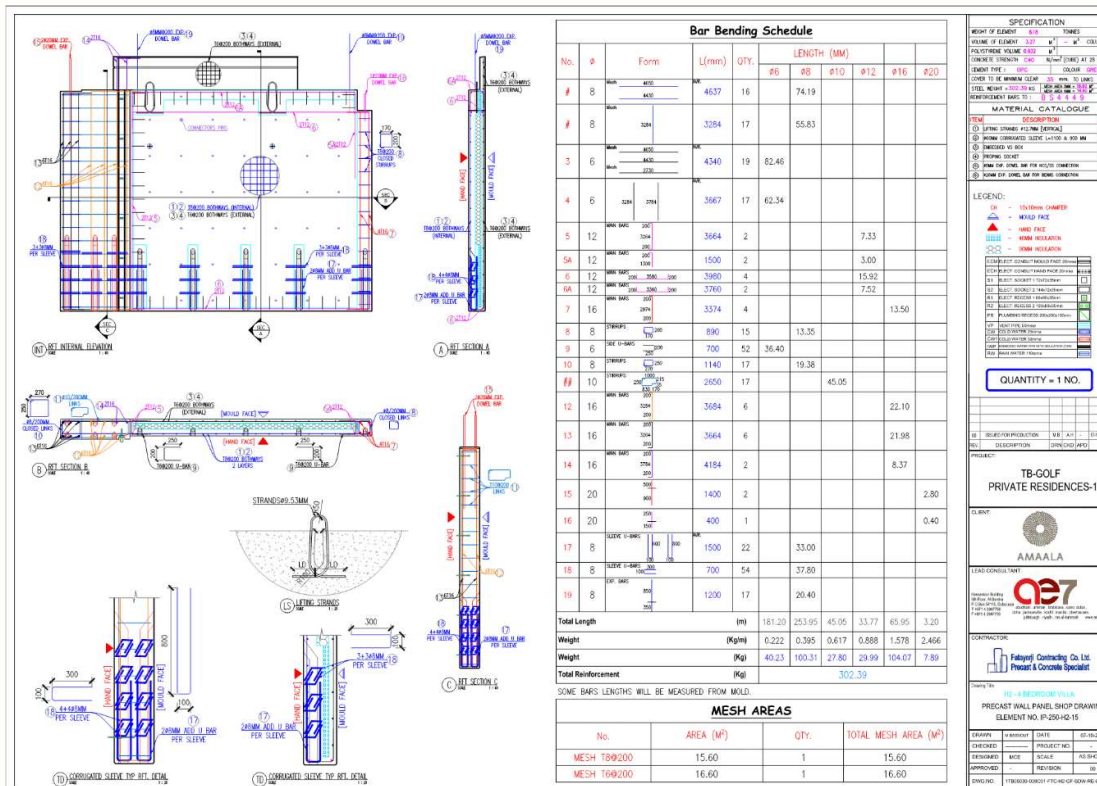


3d view (revit model)

**WE BUILD WITH VALUE**



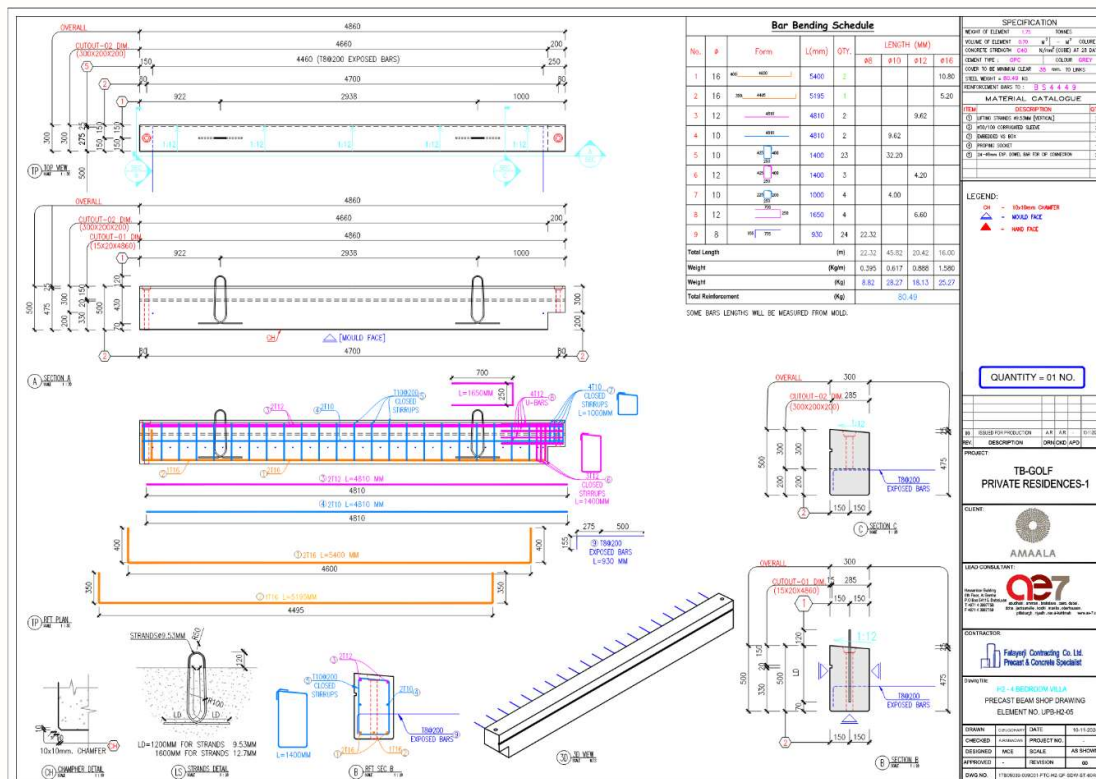
### Precast Panel Sample S.D



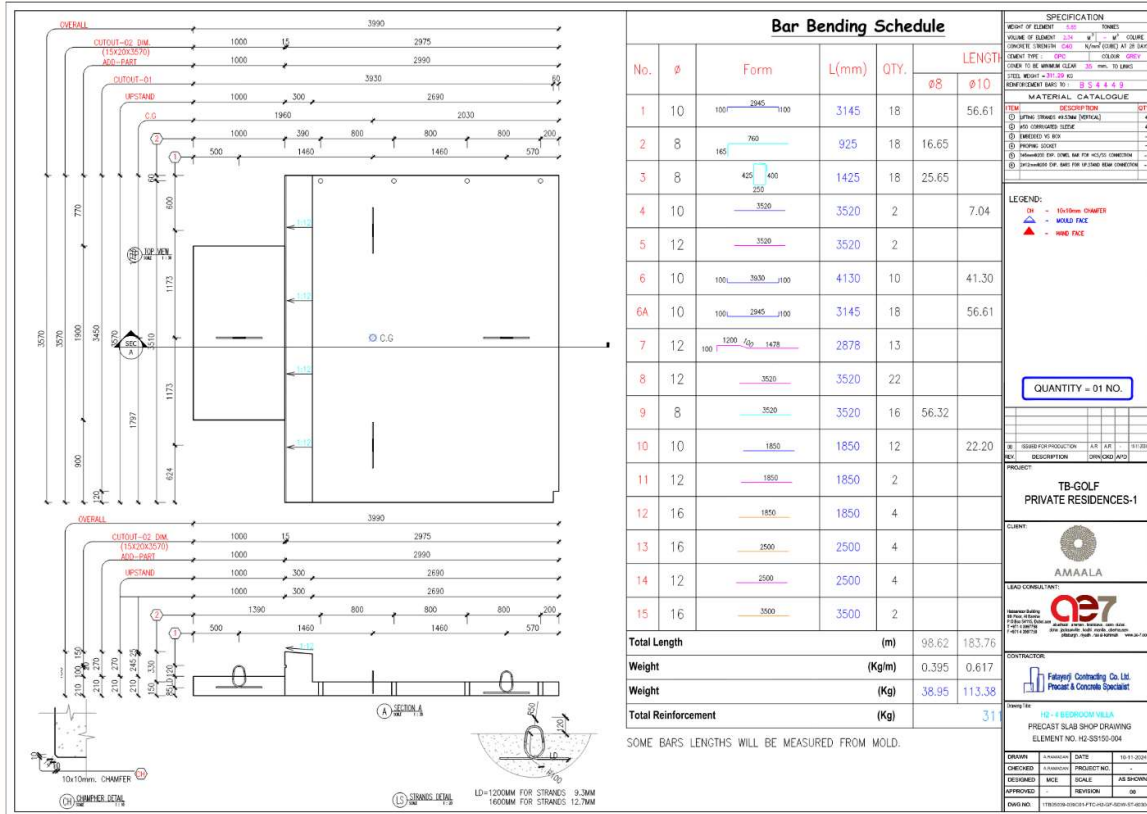
### Precast Panel Sample S.D



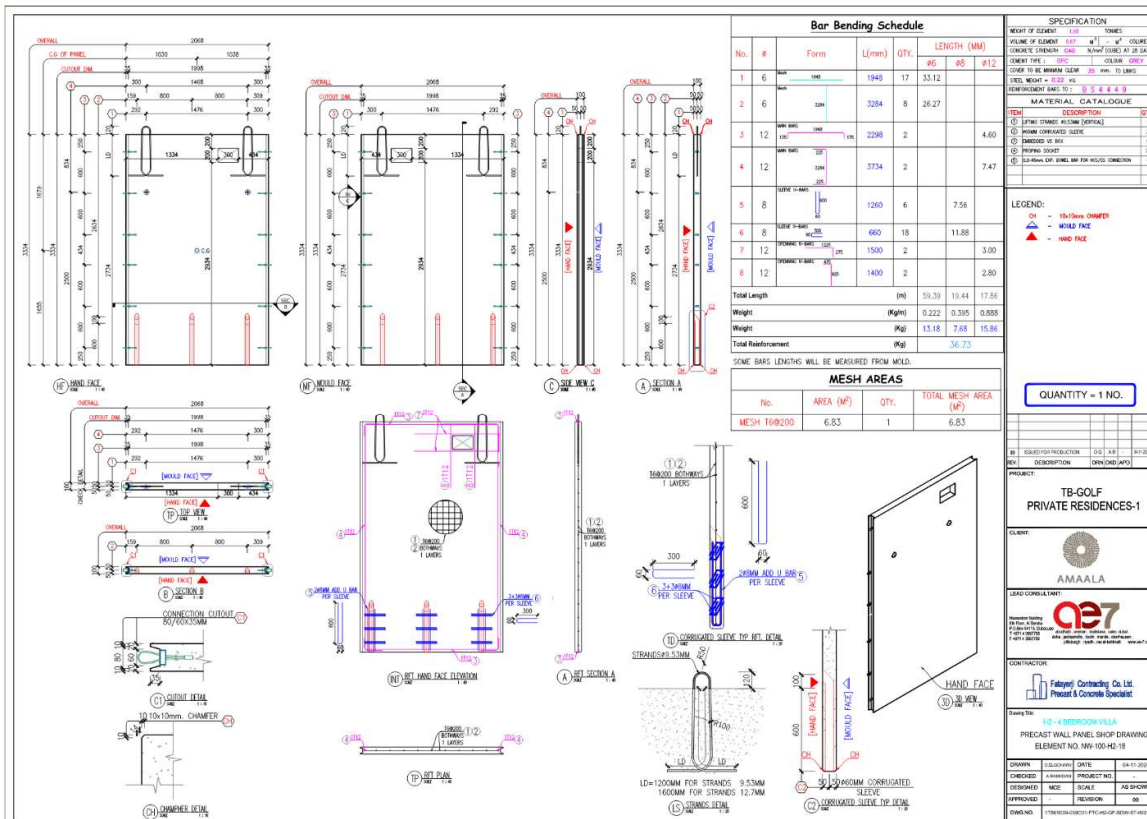
Hollow Core Slab Sample S.D



### Precast beam Sample S.D

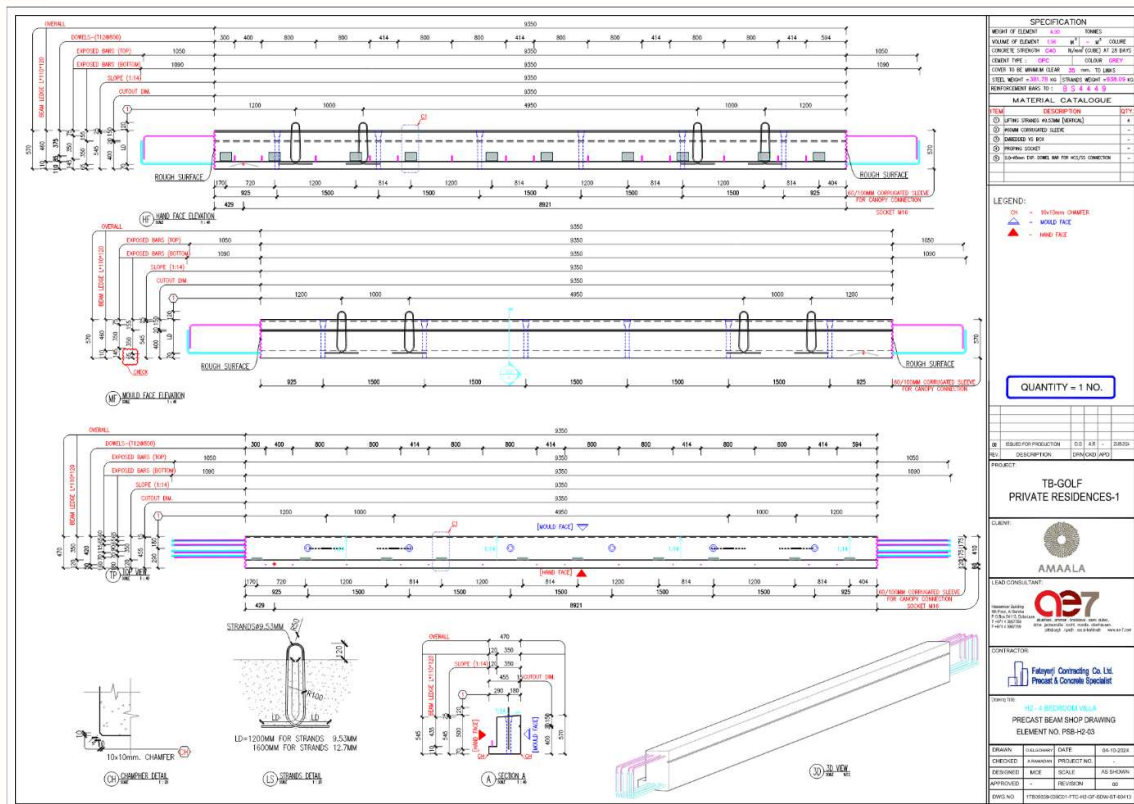


Precast Slab Sample S.D

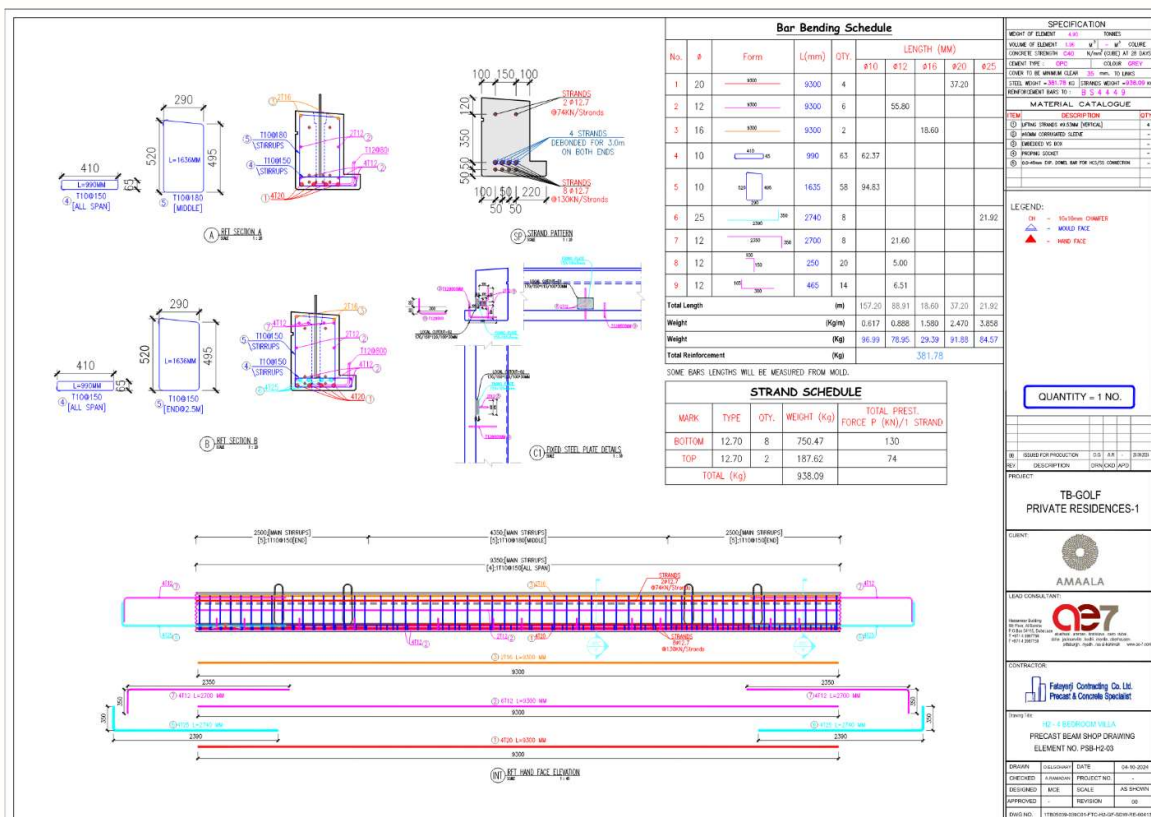


Precast Panel Sample S.D

**WE BUILD WITH VALUE**



### Precast beam Sample S.D



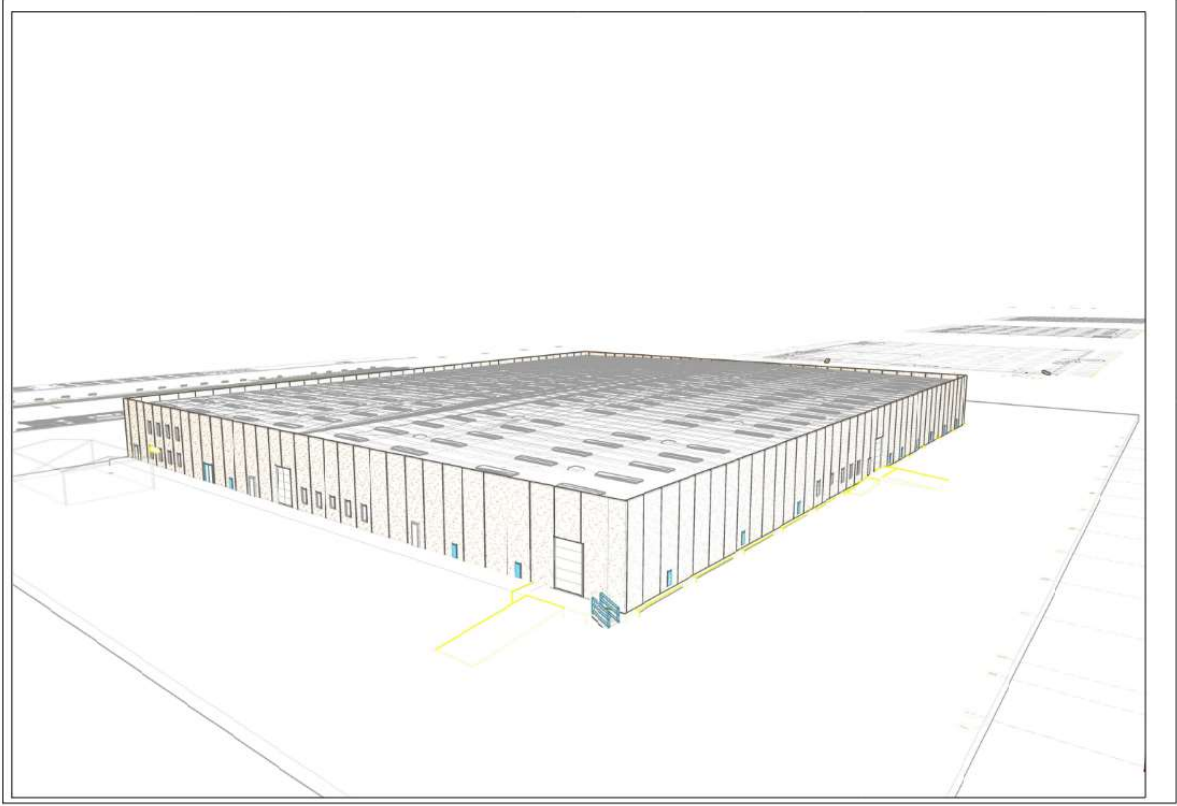
### Precast beam Sample S.D

## WE BUILD WITH VALUE



## 2- OIL & GAS NEW MAIN WAREHOUSE (BREGA, Libya)

Scope of work is Providing design concept, inputs and assumptions, Providing necessary two-dimensional models under different types of loads / loading cases as per project or code requirements / If needed, Ensuring the compliance of the design basis to the design code requirements, Producing structural drawings and documentation, Ensure correctness and completeness of the structural design. Detailed analysis and design of all structural elements.

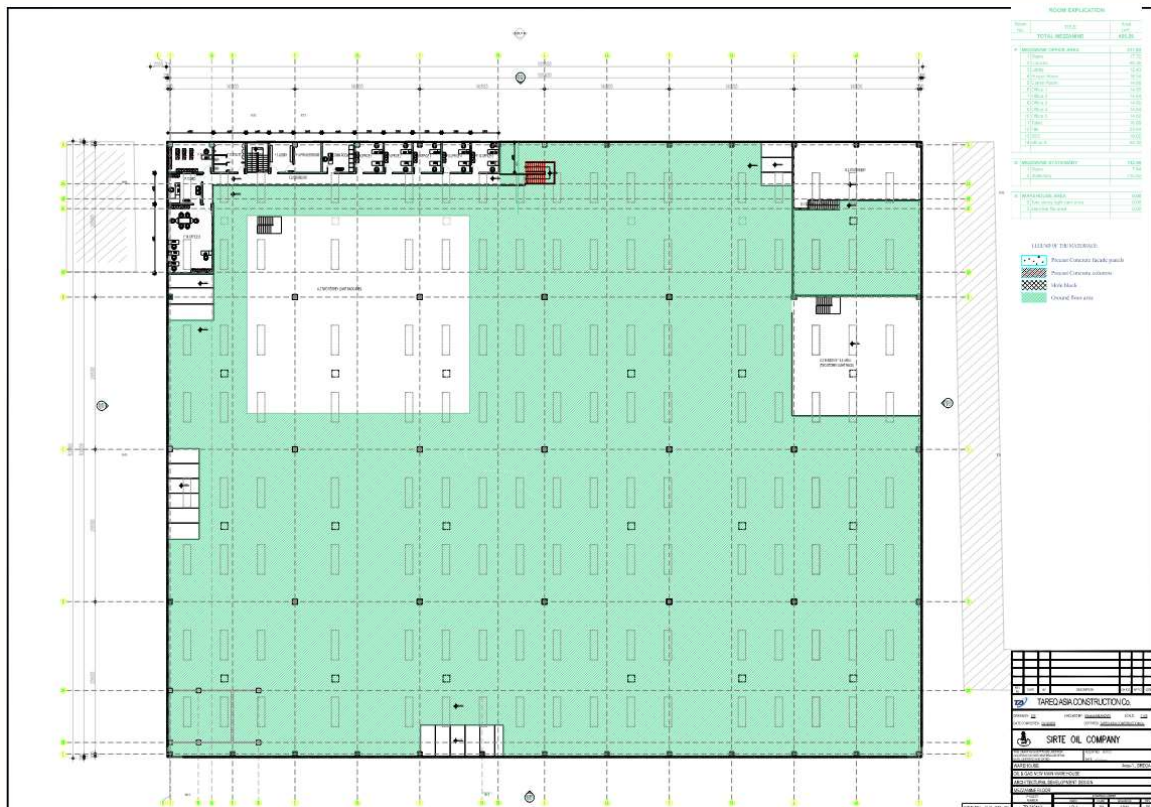


Warehouse 3d view.

**WE BUILD WITH VALUE**



Warehouse Ground Floor Plan.



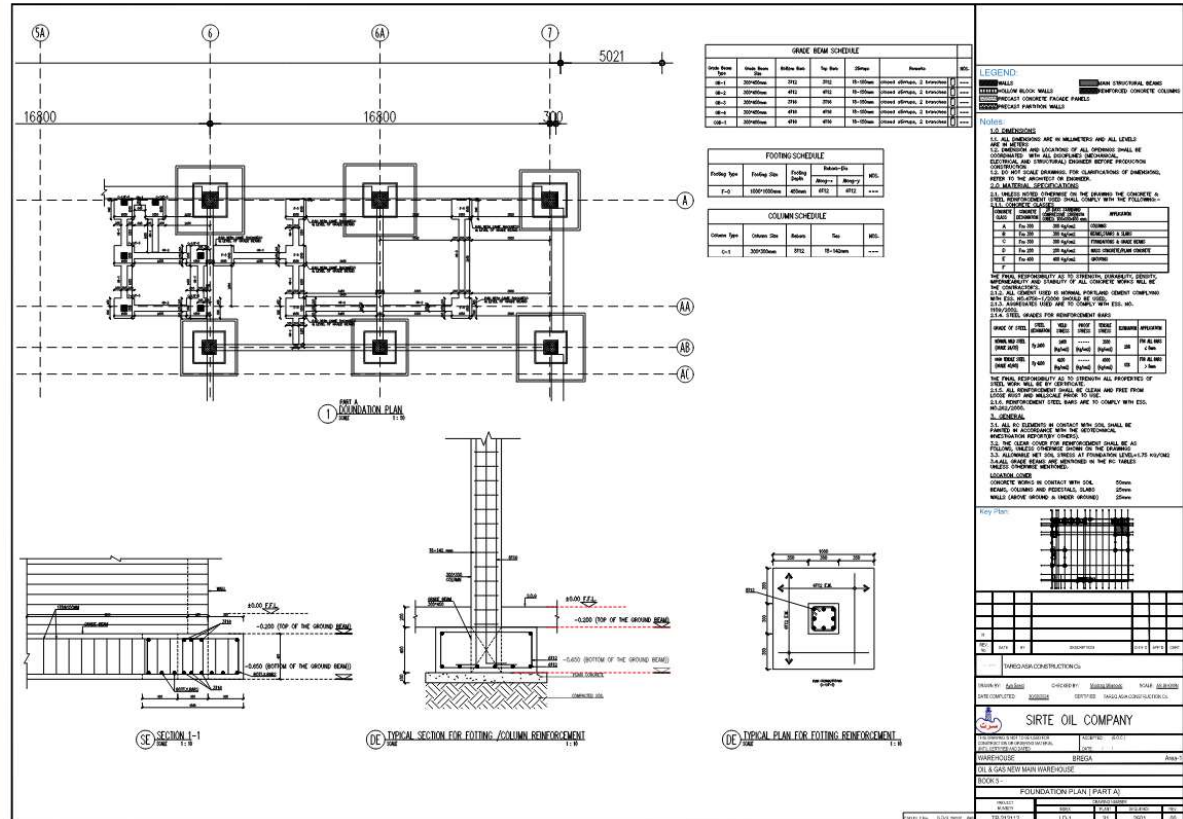
Warehouse Mezzanine Floor Plan.

**WE BUILD WITH VALUE**



[illegible]

## Architectural sections.



## Foundation Plan Part A

## WE BUILD WITH VALUE



☎ 01067795535 📍 مدينة السادات - المنطقة ال 12 - سيتي مول - الدور الثالث ✉ eternal.engineering0@gmail.com 📷 eternal.engineering 📘 eternal.engineering.services



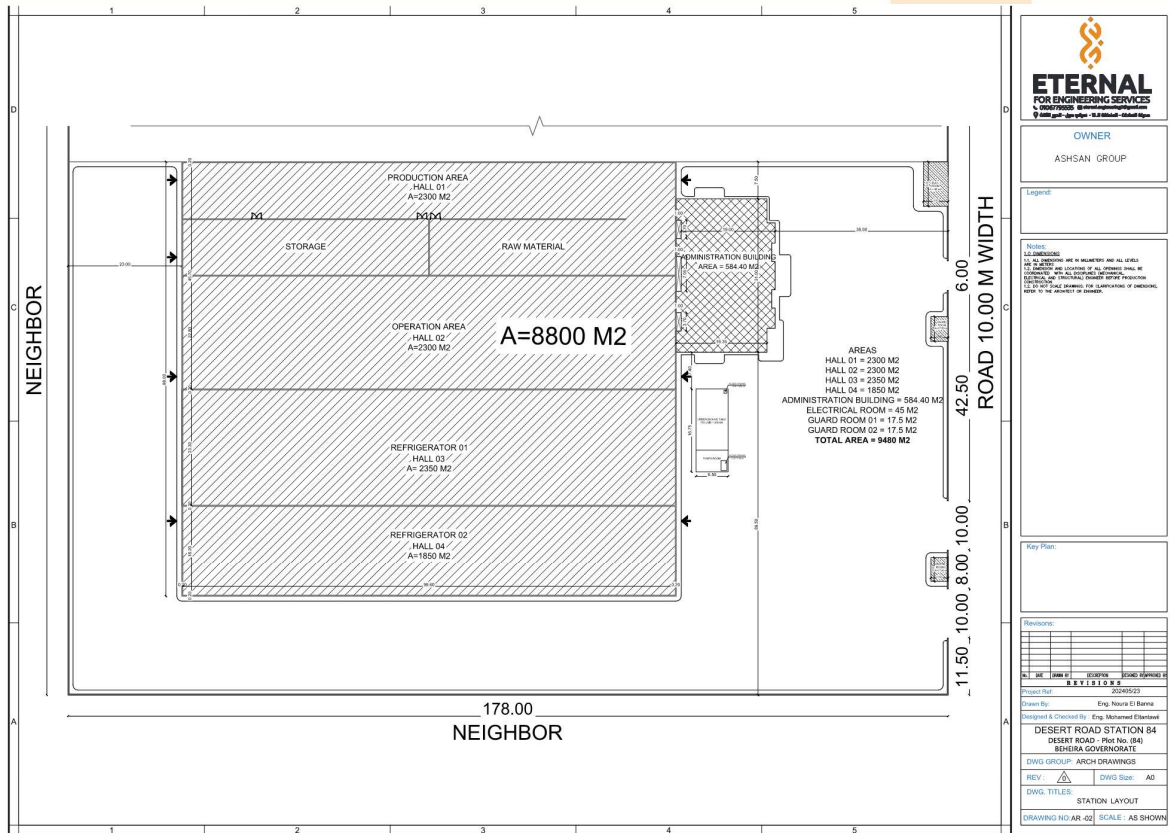


☎ 01067795535 📍 مدينة السادات - المنطقة ال 12 - سيتي مول - الدور الثالث ✉ eternal.engineering0@gmail.com 📷 eternal.engineering 📘 eternal.engineering.services

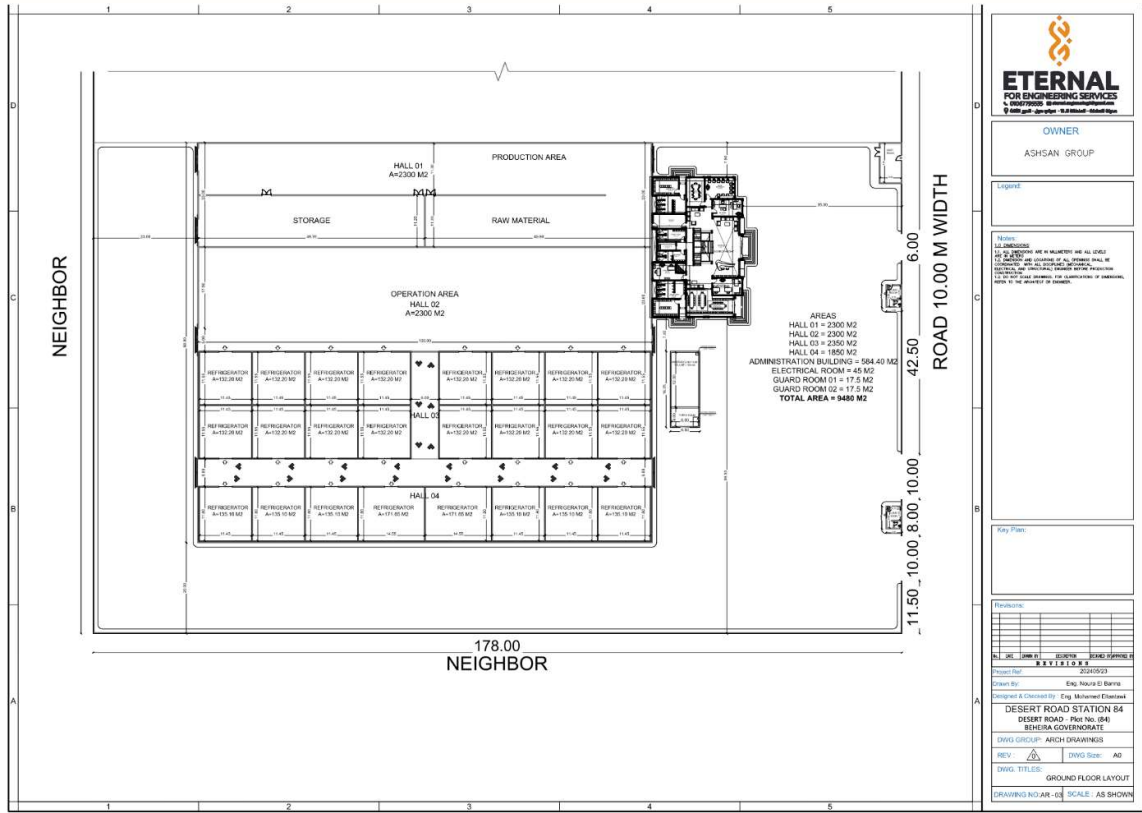


### 3- Desert Road Station (Cairo-Alex Desert Road, Egypt)

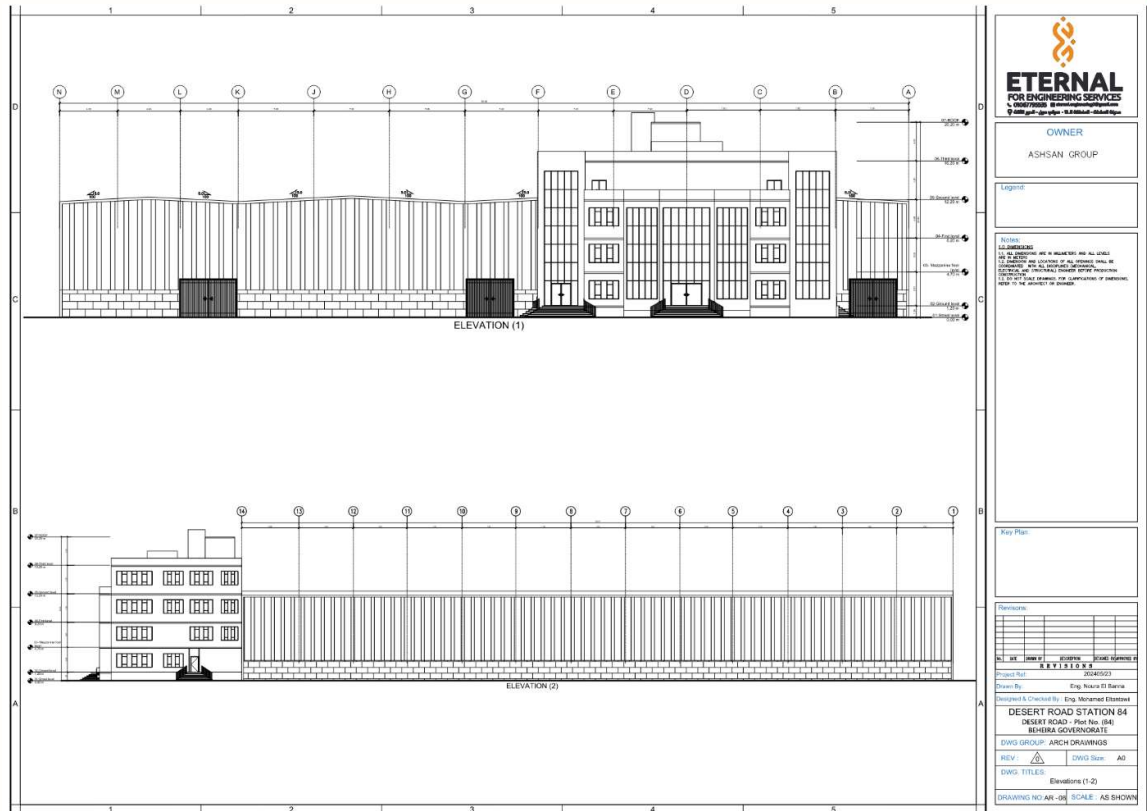
Scope of work is Providing architectural plans, Sections and elevations for the factory, Providing architectural plans, Sections and elevations for the administration Building, Ensuring the client's needs, expectations and vision for the project, Providing design concept, inputs and assumptions. Providing necessary three dimensional and two-dimensional models under different types of loads / loading cases as per code requirements, Ensuring the compliance of the design basis to the design code requirements, Providing the structural design and ensuring its compliance with the applicable ECP standards and regulations, Producing structural drawings and documentation. Ensure correctness and completeness of the structural design, Detailed analysis and design of all structural elements, Technical meetings with project main consultant to discuss the requirements and ensure its implementation.



STATION LAYOUT.

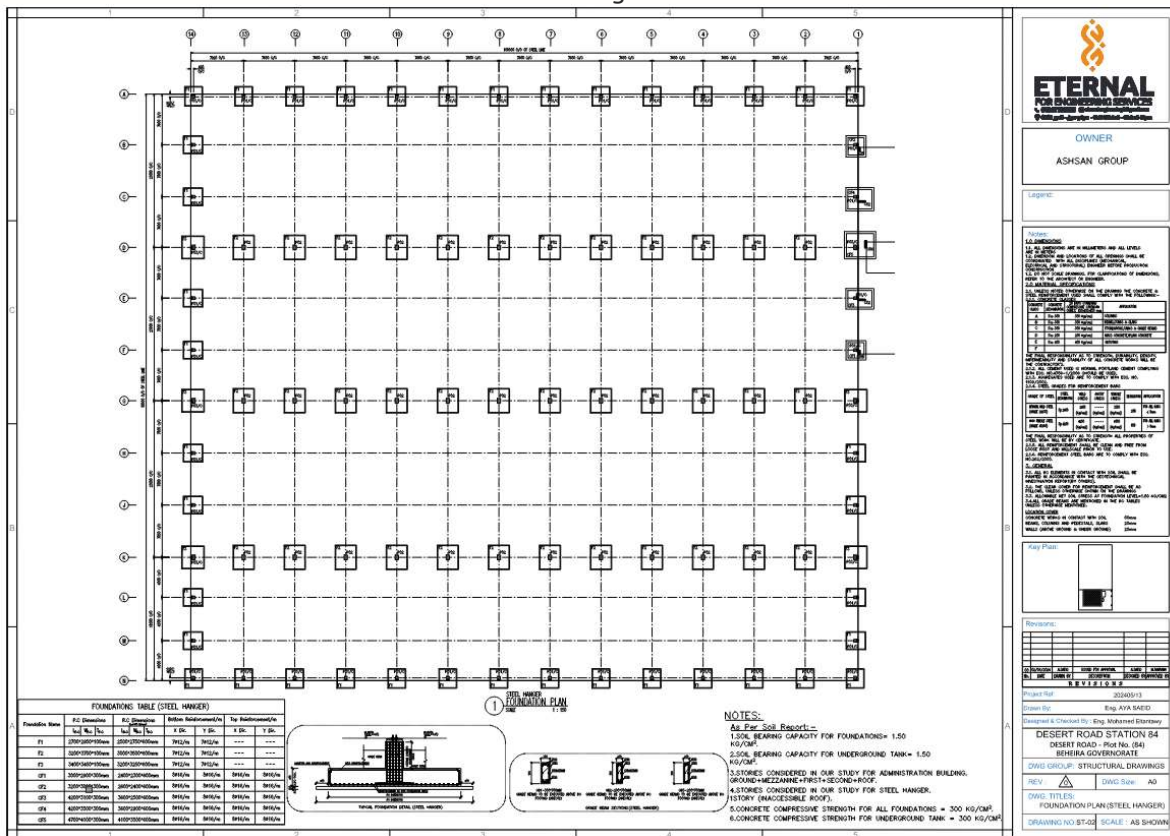
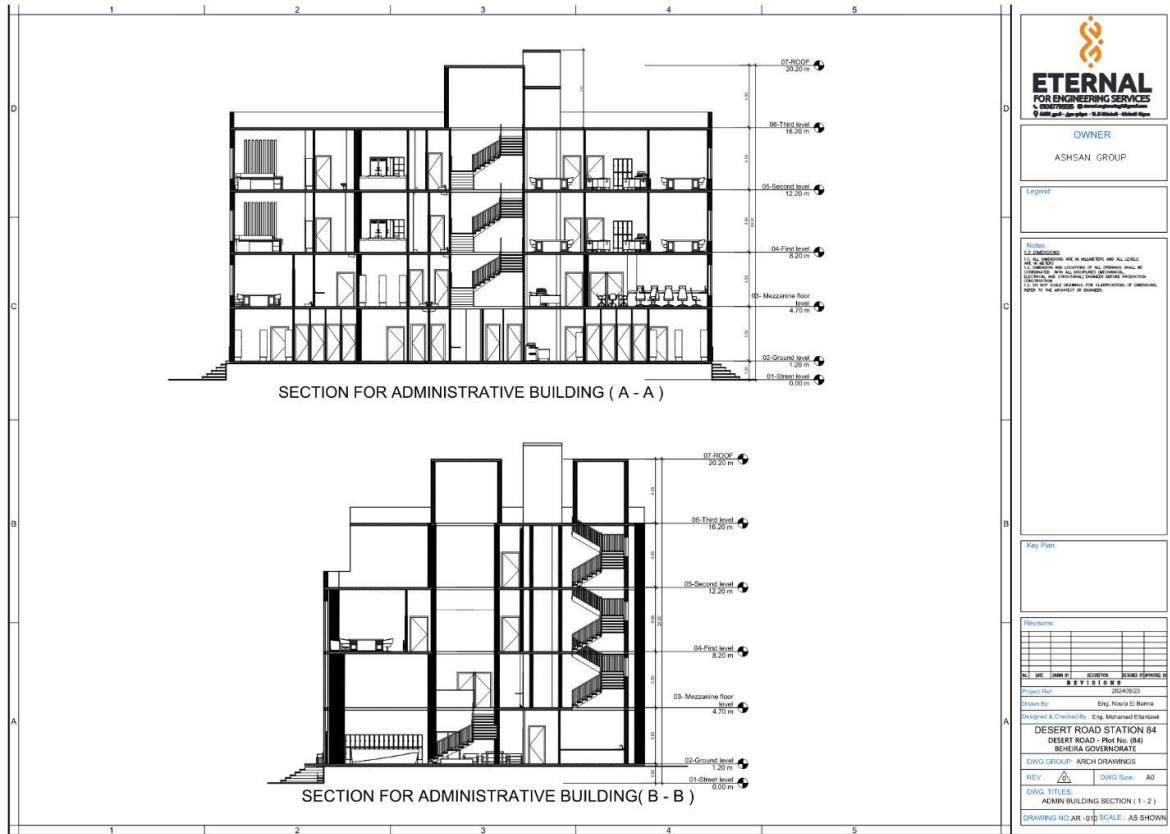


### Ground Floor layout



Elevations.

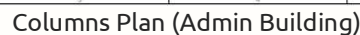
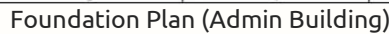
## WE BUILD WITH VALUE



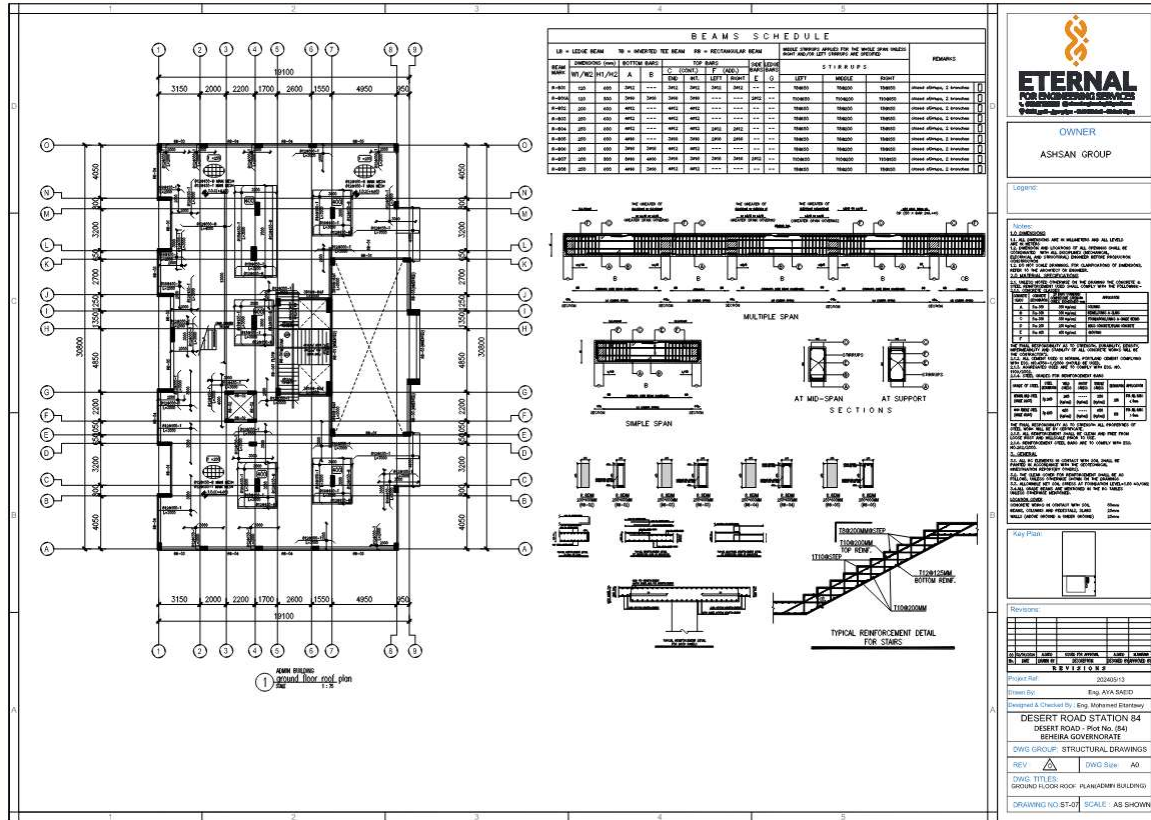
Foundation Plan

**WE BUILD WITH VALUE**

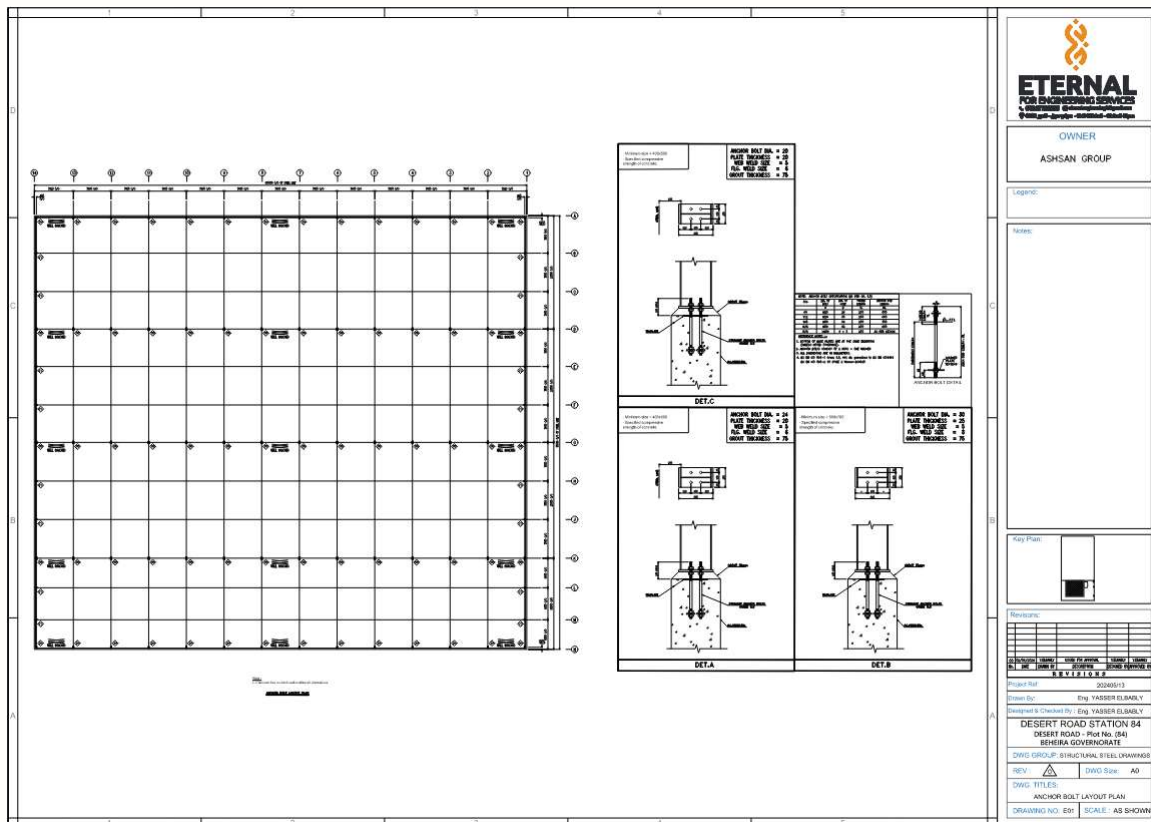




01067795535 مدينة السادات - المنطقة 12 - سيتي مول - الدور الثالث eternal.engineering0@gmail.com eternal.engineering eternal.engineering.services

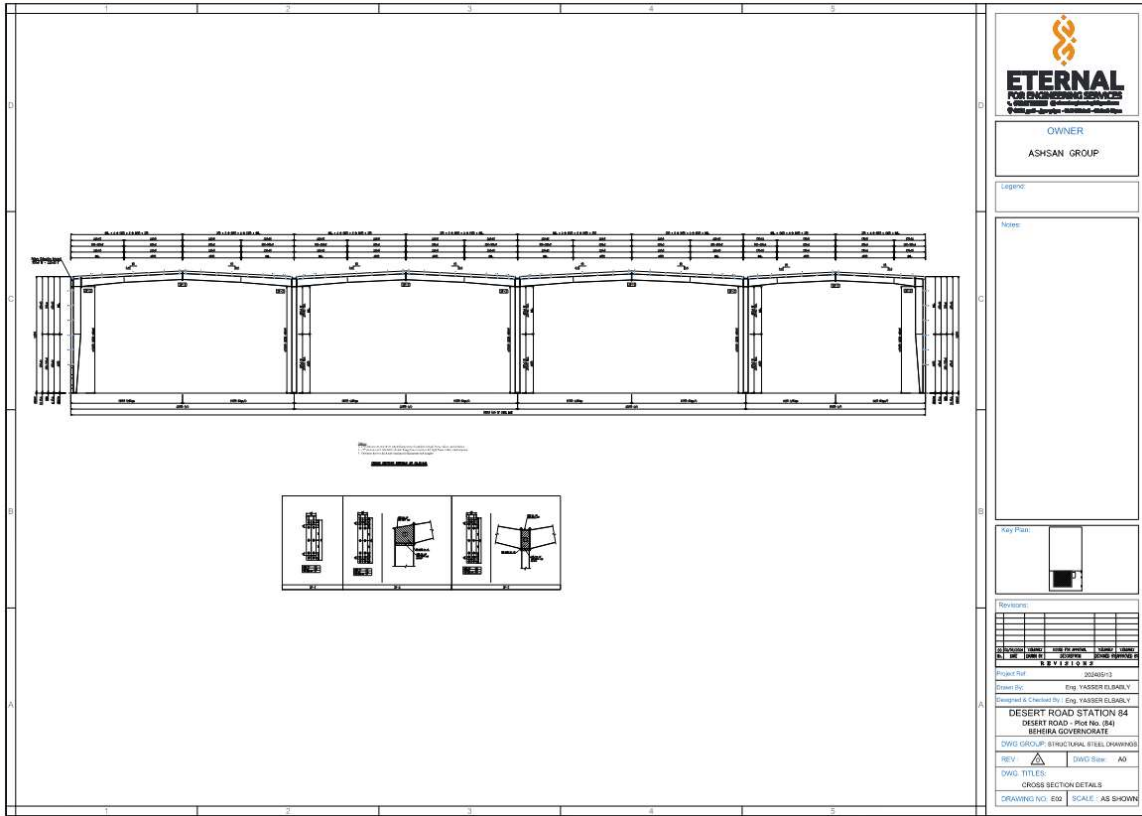


Ground Floor Roof Plan (Admin Building)

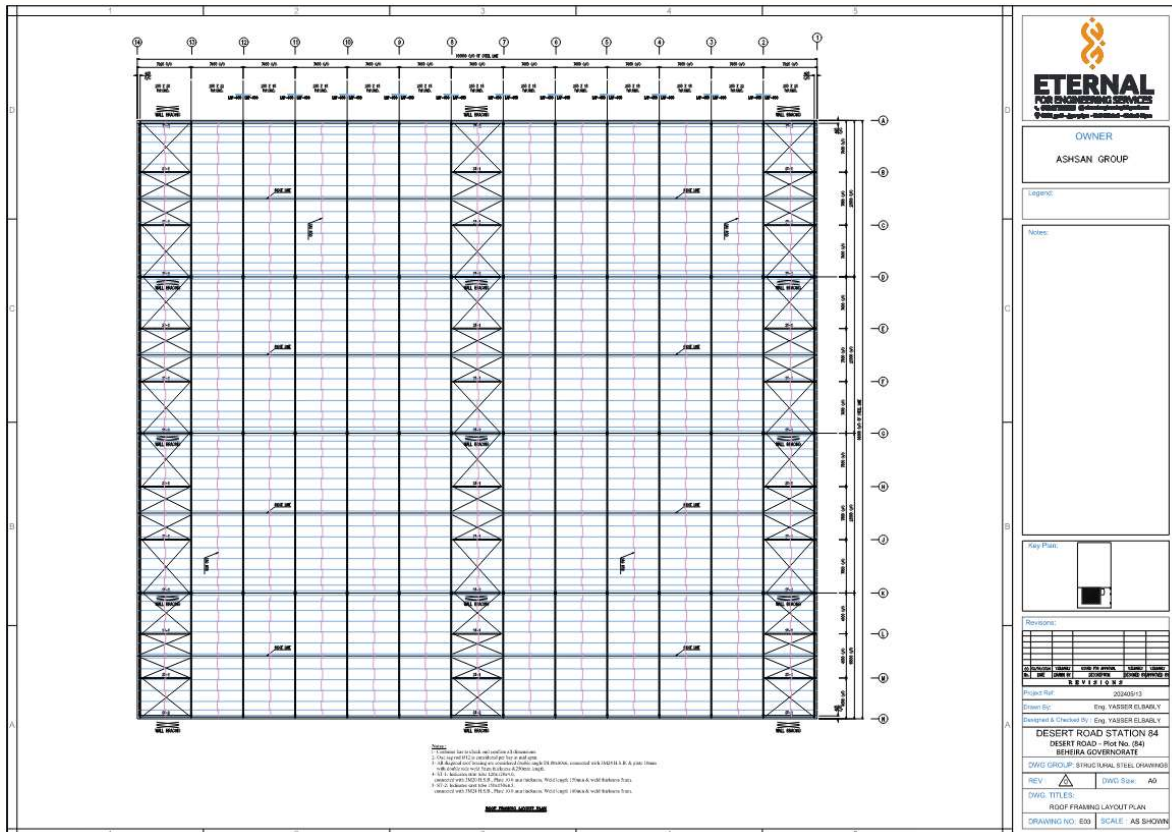


Anchor bolts layout plan

**WE BUILD WITH VALUE**



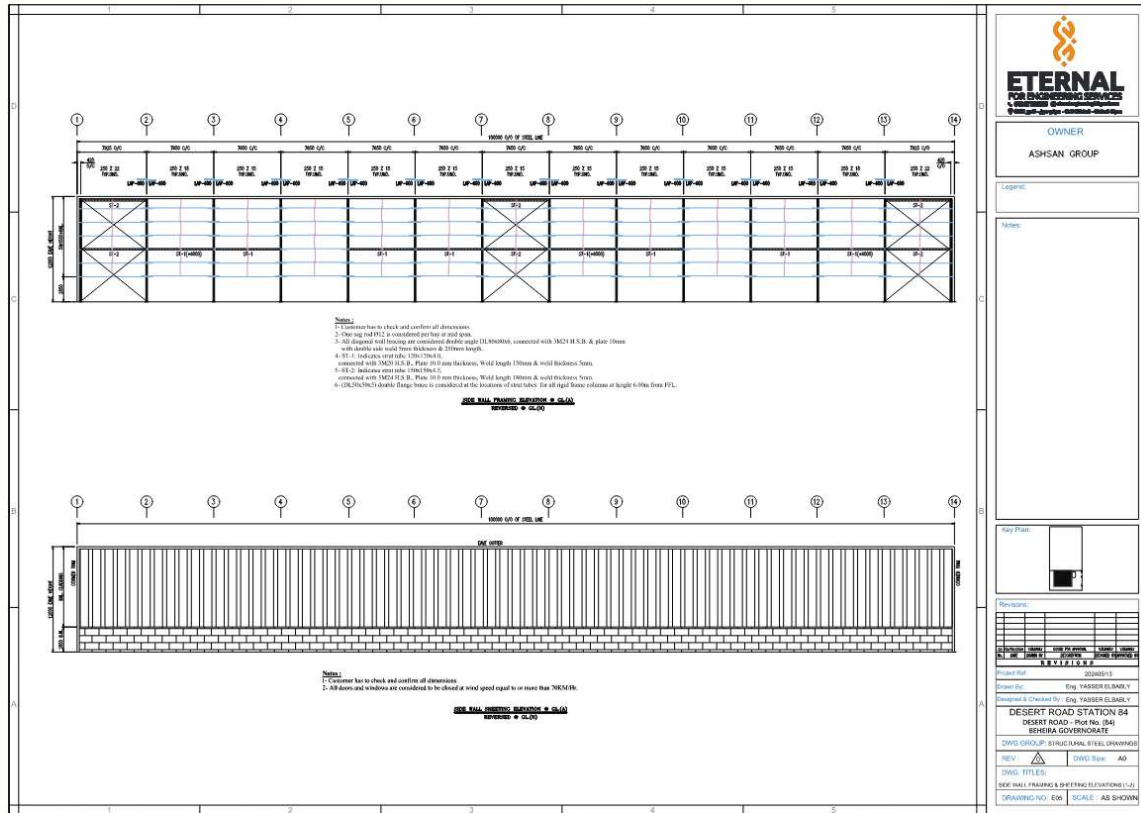
Cross Section Details



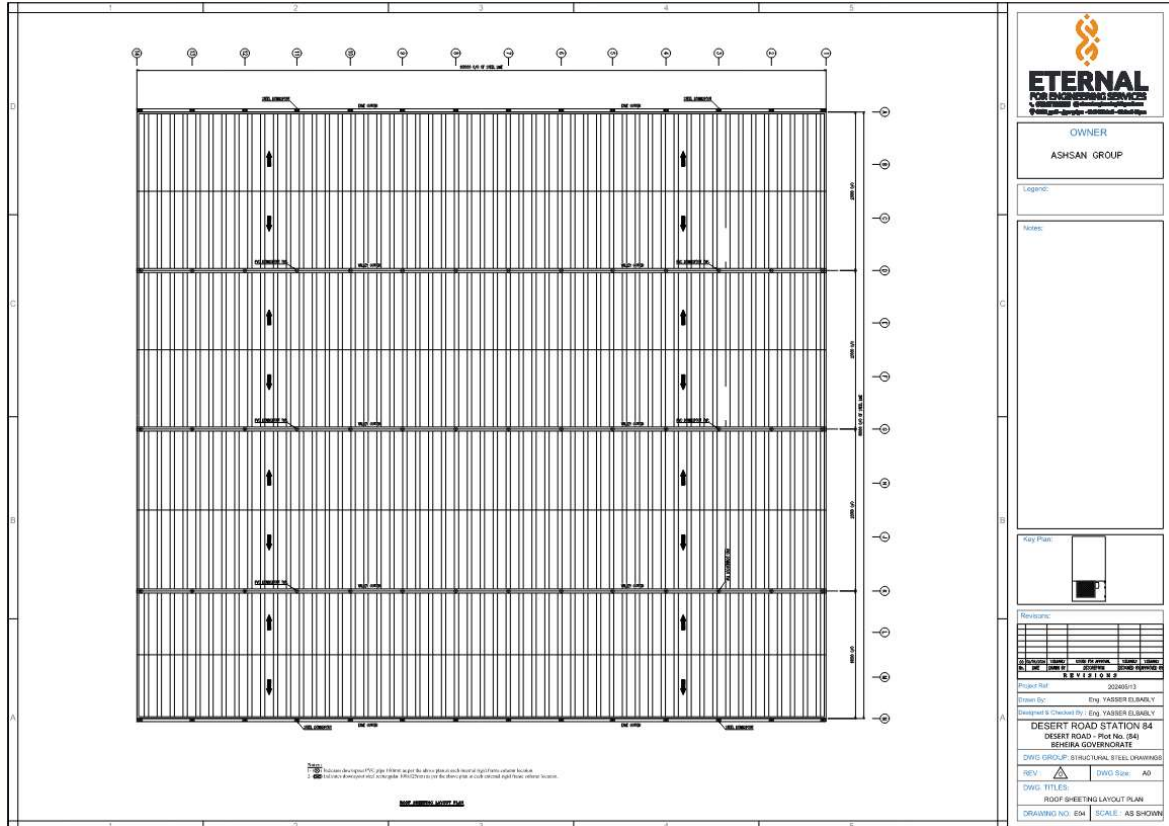
Roof framing layout plan

**WE BUILD WITH VALUE**



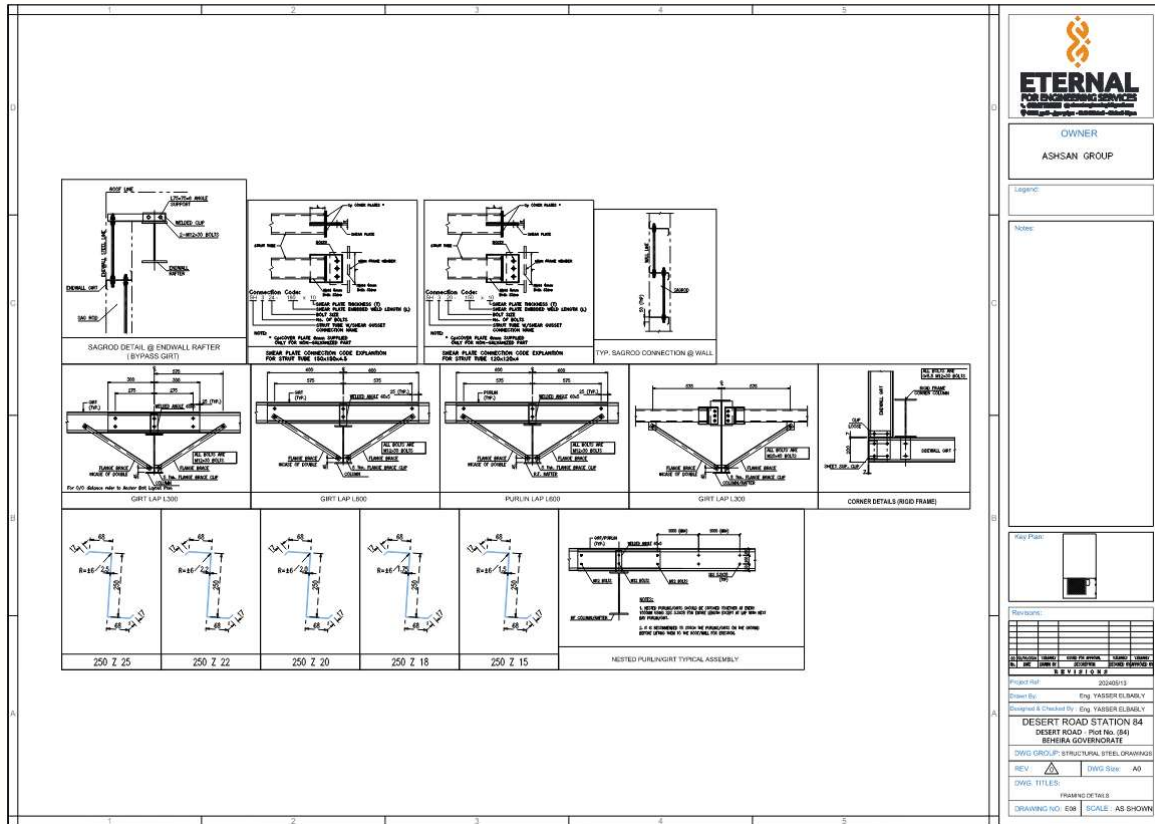


Side wall framing & Sheeting elevation

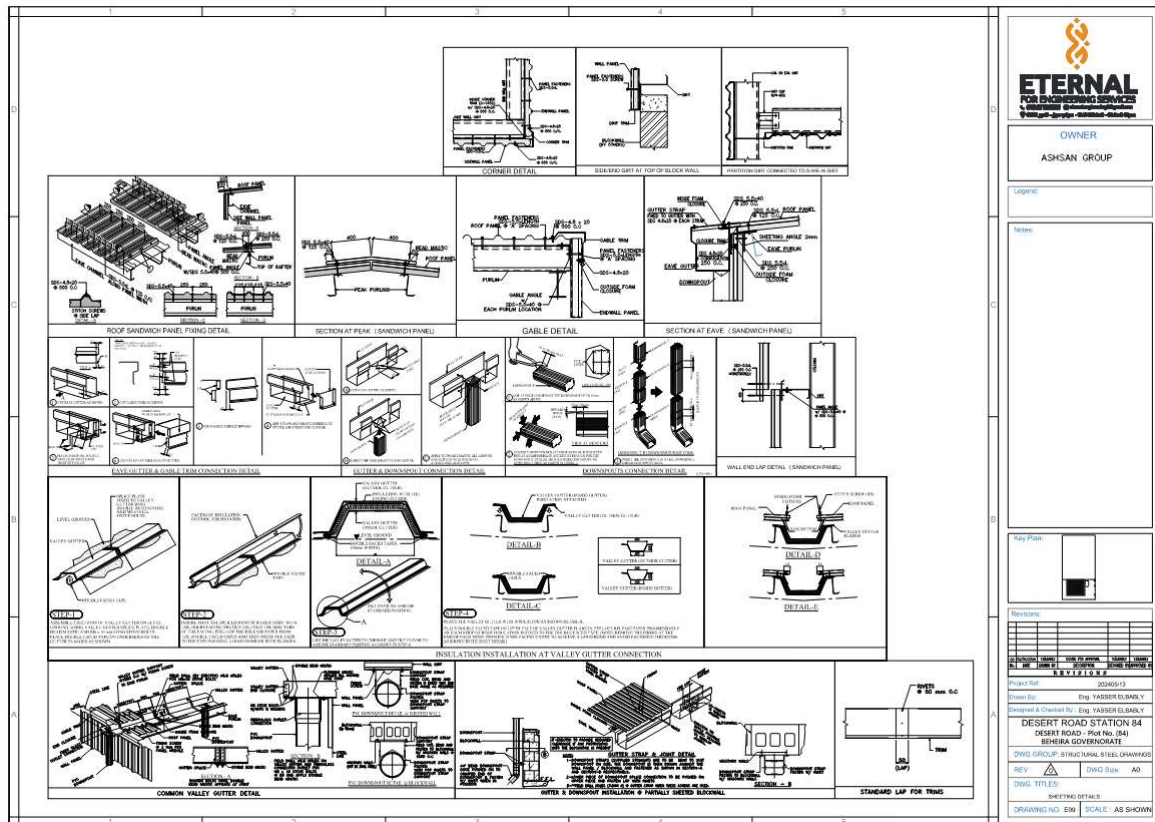


Roof Sheeting layout plan

**WE BUILD WITH VALUE**



Framing details.



Sheeting details.

**WE BUILD WITH VALUE**



#### 4- AL Rimal Strip Mall BANK ALBILAD (Riyadh, Saudi Arabia) STRUCTURAL DESIGN For Bank In SAUDI ARABIA.

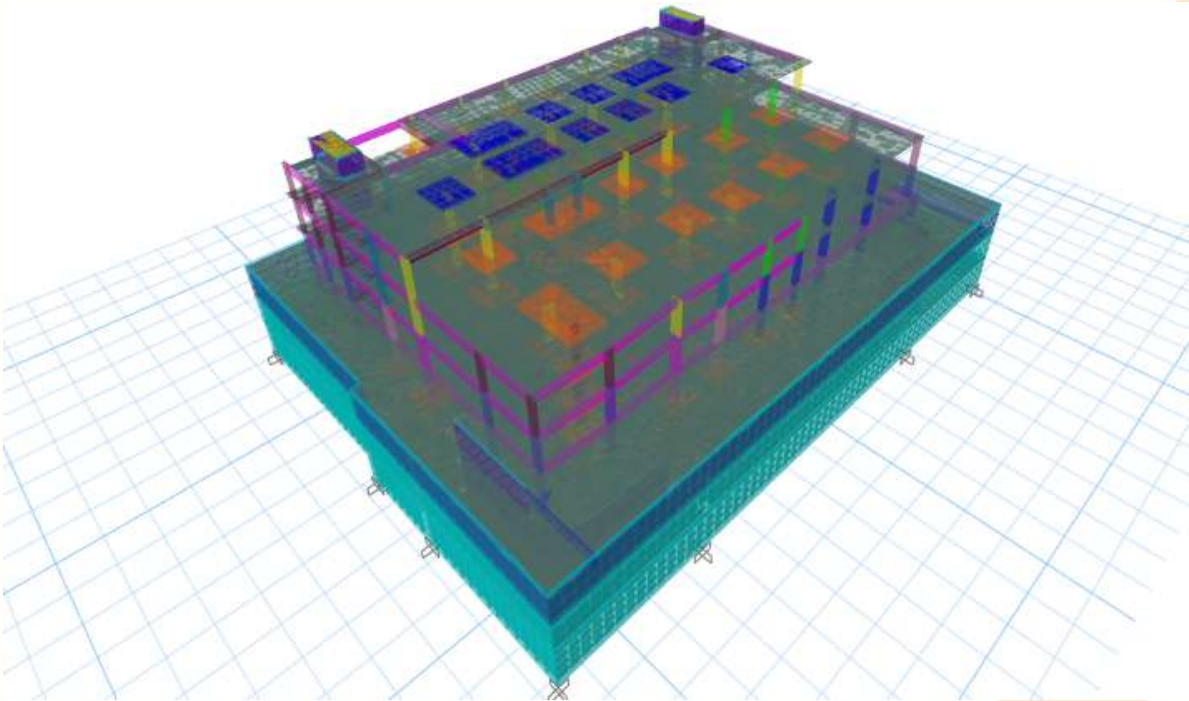
Scope of work is to design all structural concrete elements in the bank in compliance with the architectural requirements and to provide a complete technical report with all the calculations including lateral loads as per SBC code.

The bank consists of 6 floors (3 Basements, 2 stories & Roof)

ETERNAL was responsible for Structural design of projects building, tanks and preparing a technical report & structural drawings for approval.

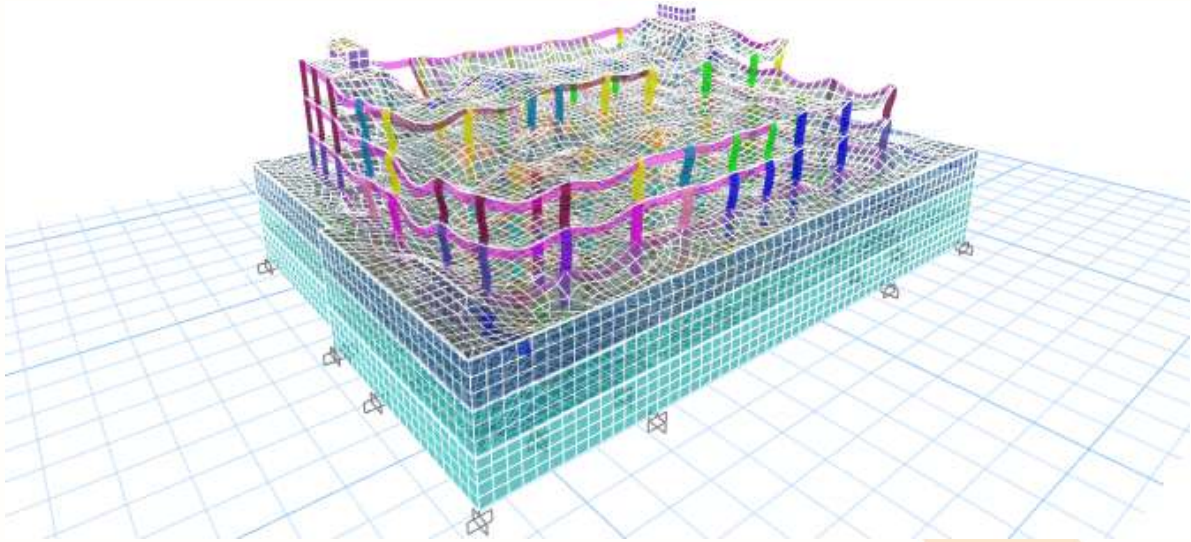


Bank 3D View (By others).

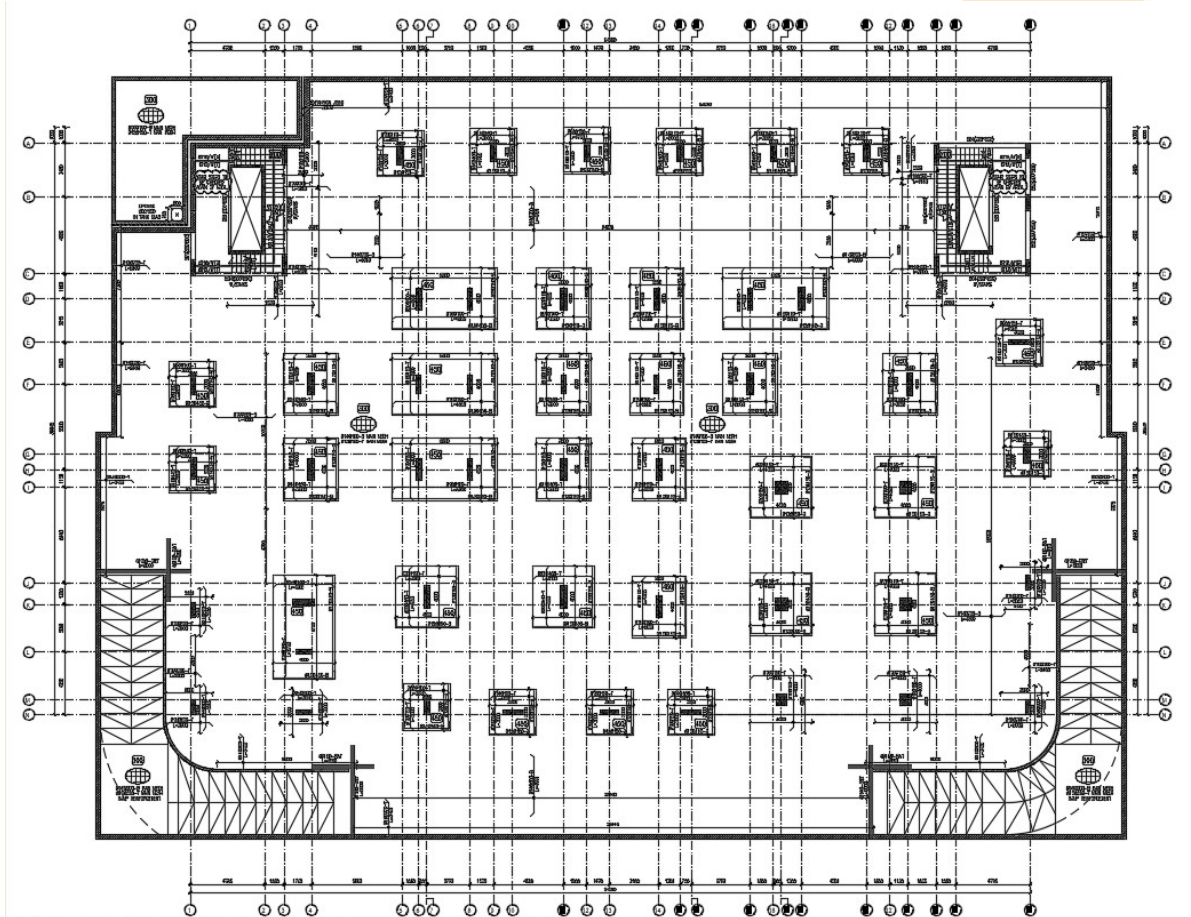


Bank 3D Etabs Model.

**WE BUILD WITH VALUE**



Bank 3D Etabs deformed shape.



**BASEMENT 3 FLOOR STRUCTURAL PLAN**

(Example plan) for basement 3 structural plan.

**WE BUILD WITH VALUE**

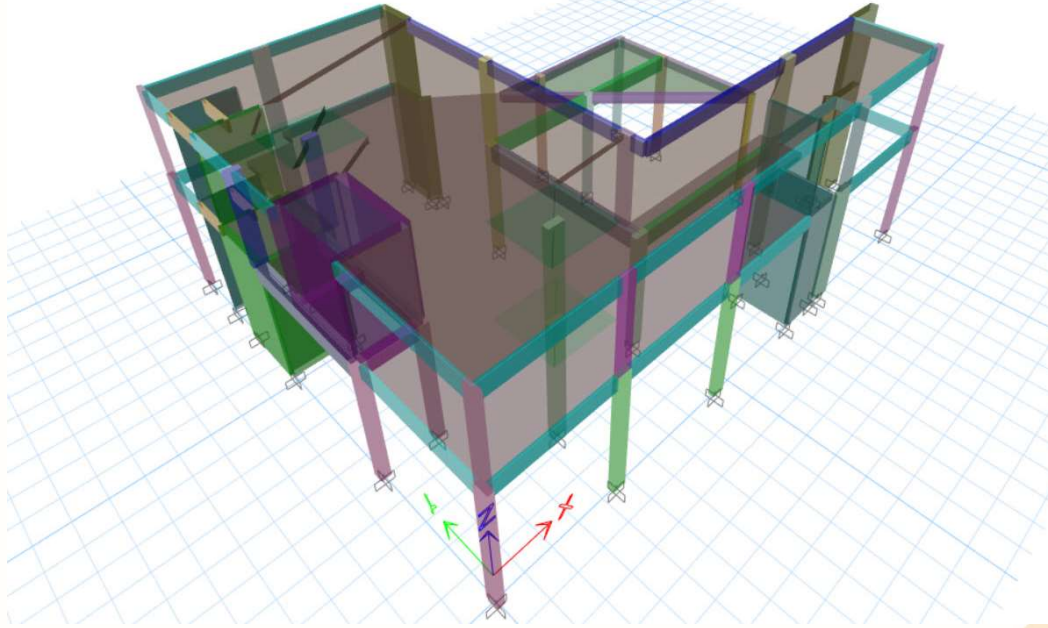


## 5- VARIOUS STRUCTURAL DESIGNS IN SAUDI ARABIA (BANKS, RESIDENTIAL VILLAS, COMMERCIAL BUILDINGS AND FACTORIES).

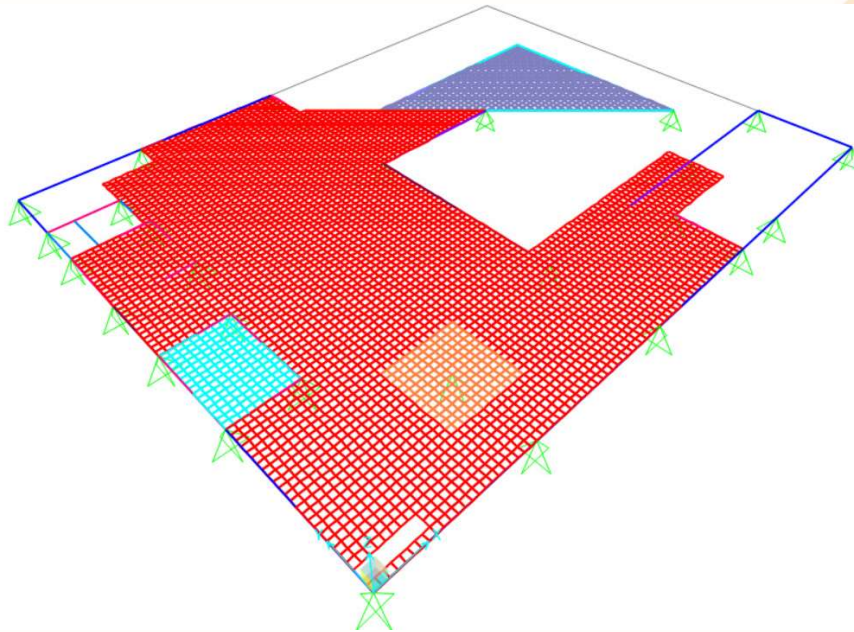
### Structural design for various building (Saudi Arabia).

Scope of work is to design all structural concrete elements in different buildings in compliance with the architectural requirements and to provide a complete technical report with all the calculations including lateral loads as per SBC code.

ETERNAL was responsible for Structural design of projects building, tanks and preparing a technical report & structural drawings for approval.

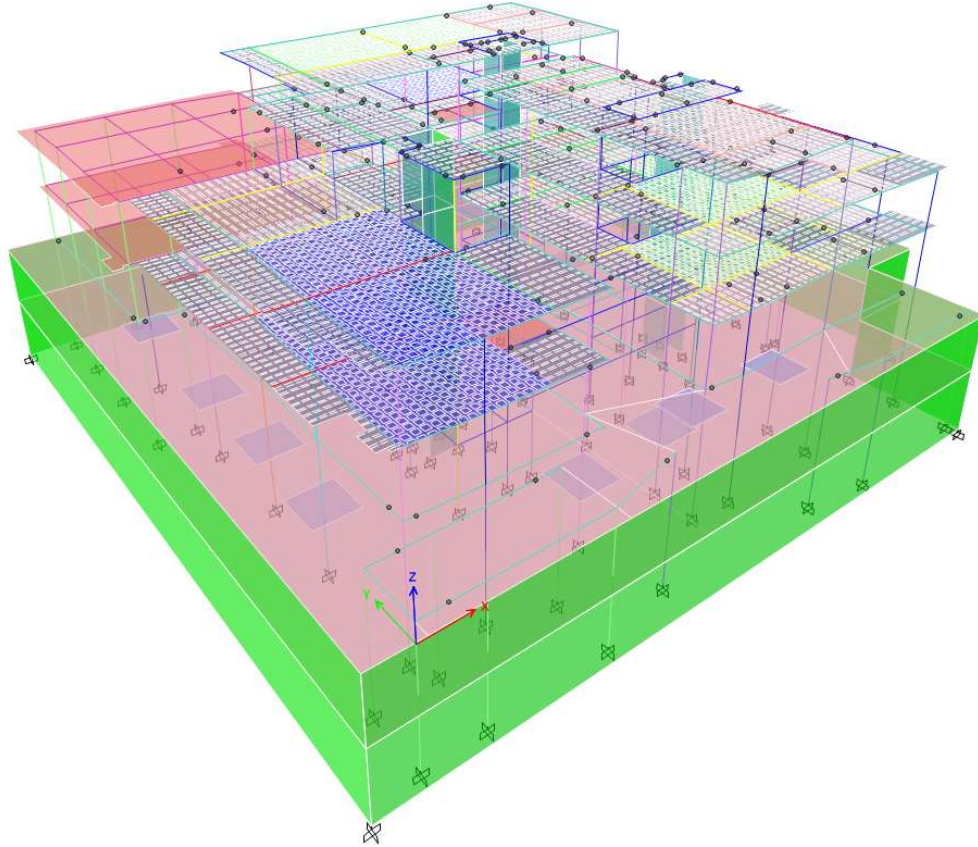


Etabs 3d Model (Commercial Building).

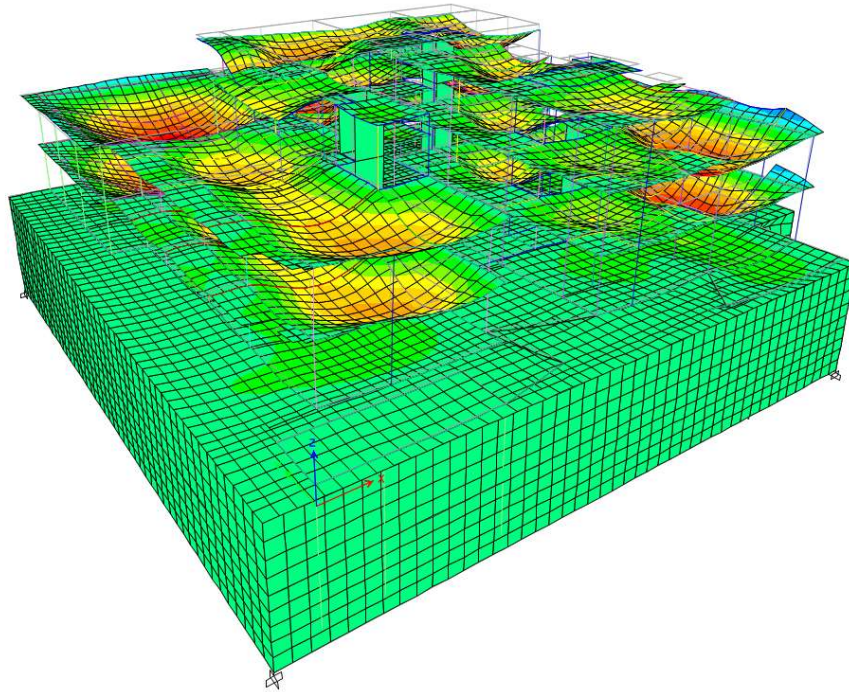


Slab Sab Model (Commercial Building).

**WE BUILD WITH VALUE**



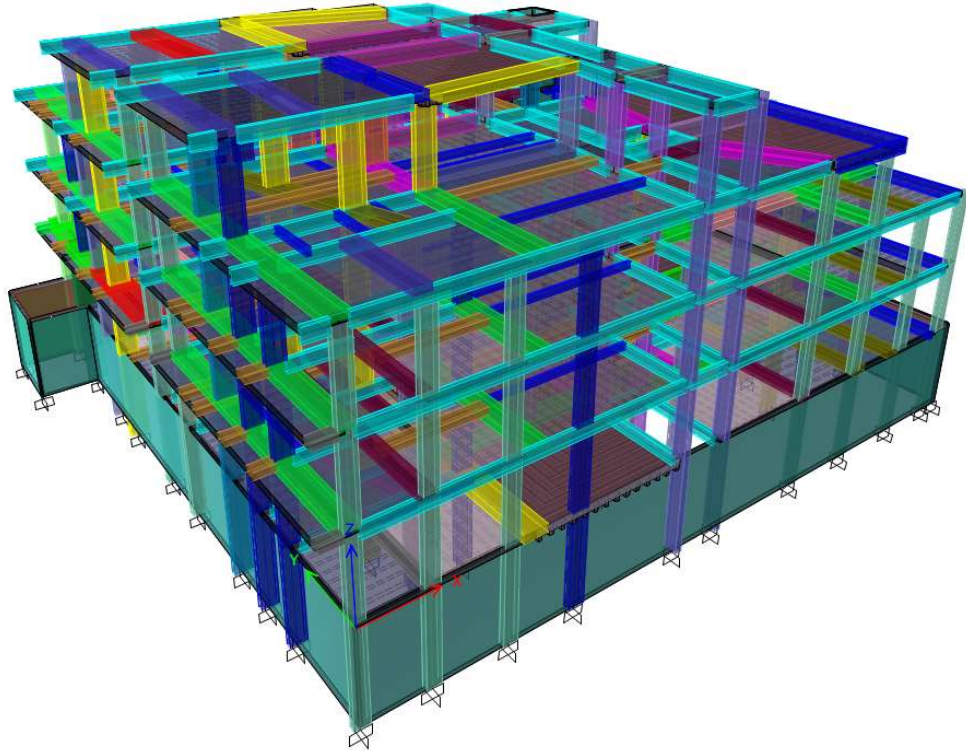
Etabs 3d Model (AYA\_ Commercial & Residential Building) Building statical system has different types of slabs such as (Solid Slabs, Flat Slabs, Hollow Block Slabs & Paneled beams), It's also had a lot of planted columns in order to maintain the architectural requirements.



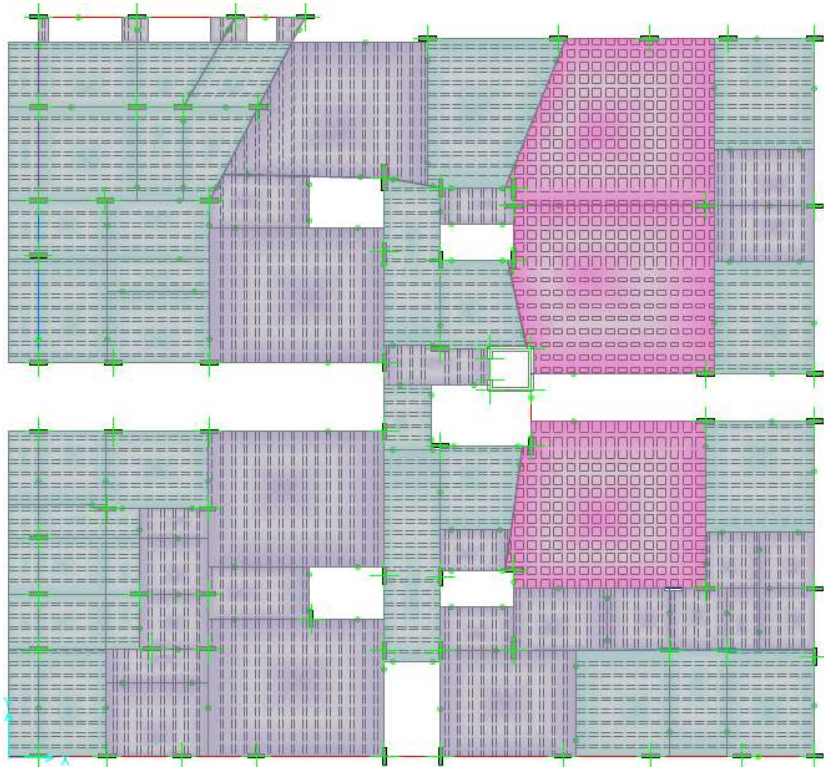
Etabs 3d Model Deformed Shape (AYA\_ Commercial & Residential Building).

**WE BUILD WITH VALUE**



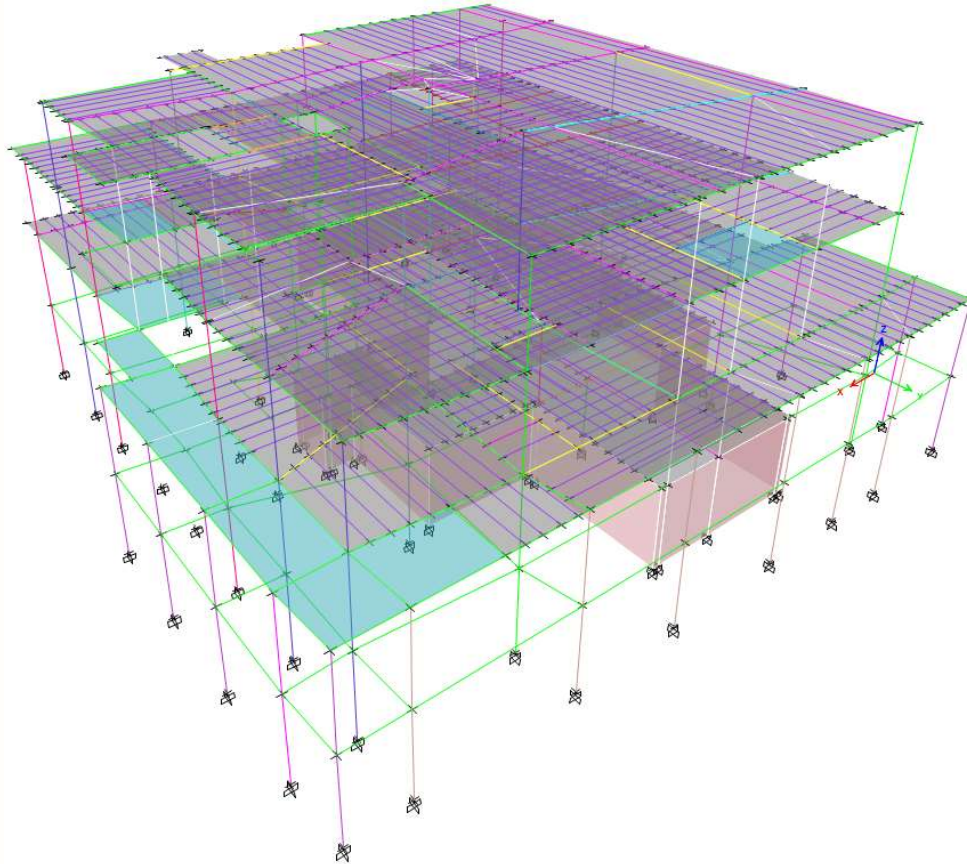


Etabs 3d Model (ABDELAZIZ ABDALLAH\_ Commercial & Residential Building) Building statical system has different types of slabs such as (Solid Slabs & Hollow Block Slabs), It's also had a lot of planted columns in order to maintain the architectural requirements.

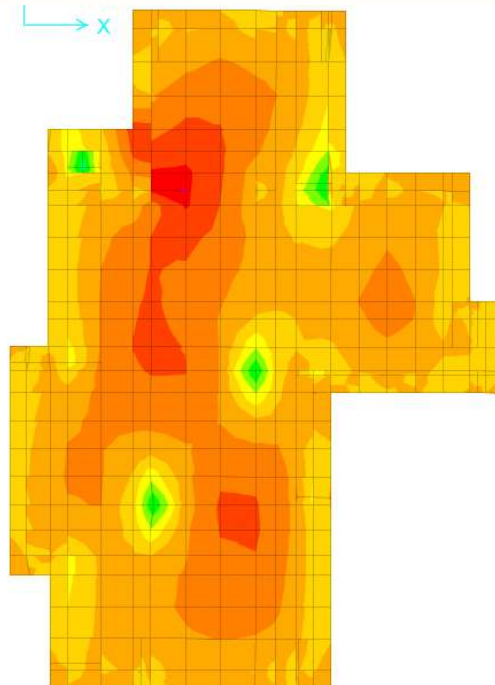


Safe Ground Floor Slab Model (ABDELAZIZ ABDALLAH\_ Commercial & Residential Building).

**WE BUILD WITH VALUE**



Etabs 3d Model (KH Villa\_ Residential Building) Building statical system has different types of slabs such as (Solid Slabs, Flat Slabs & Hollow Block Slabs), It's also had a lot of planted columns in order to maintain the architectural requirements.



Safe Raft Model (KH Villa\_ Residential Building).

**WE BUILD WITH VALUE**



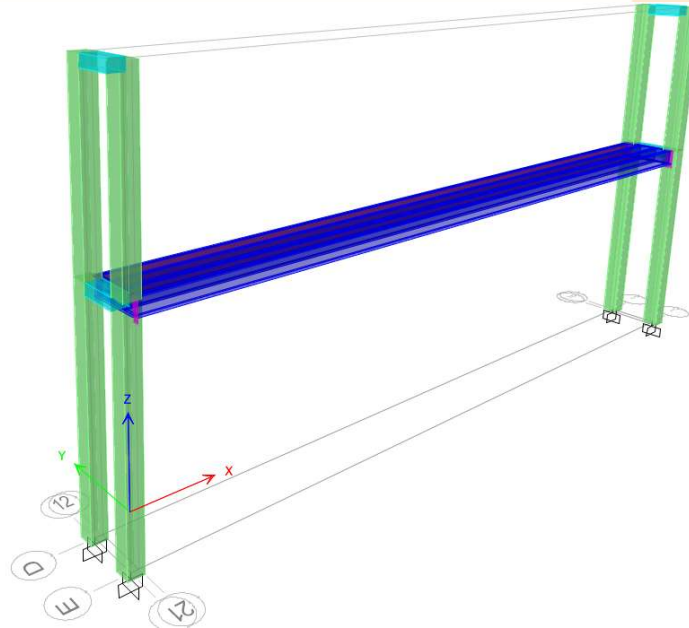


## 6- STRUCTURAL DESIGNS FOR FOOTBRIDGES IN LIBYA.

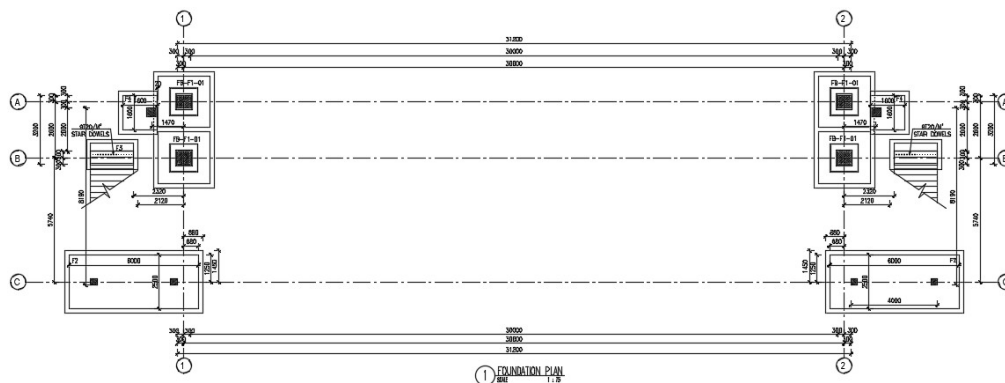
### Structural design for precast footbridge 30m (LIBYA).

Scope of work is to design all structural precast & cib concrete elements in different buildings in compliance with the architectural requirements and to provide a complete technical report with all the calculations including lateral loads as per ACI code.

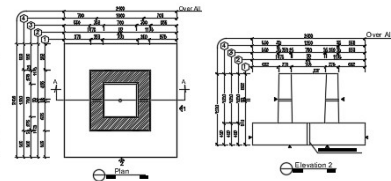
ETERNAL was responsible for Structural design of all the project elements and preparing a technical report & structural drawings for approval.



Etabs 3d Model (Precast Footbridge 30m)



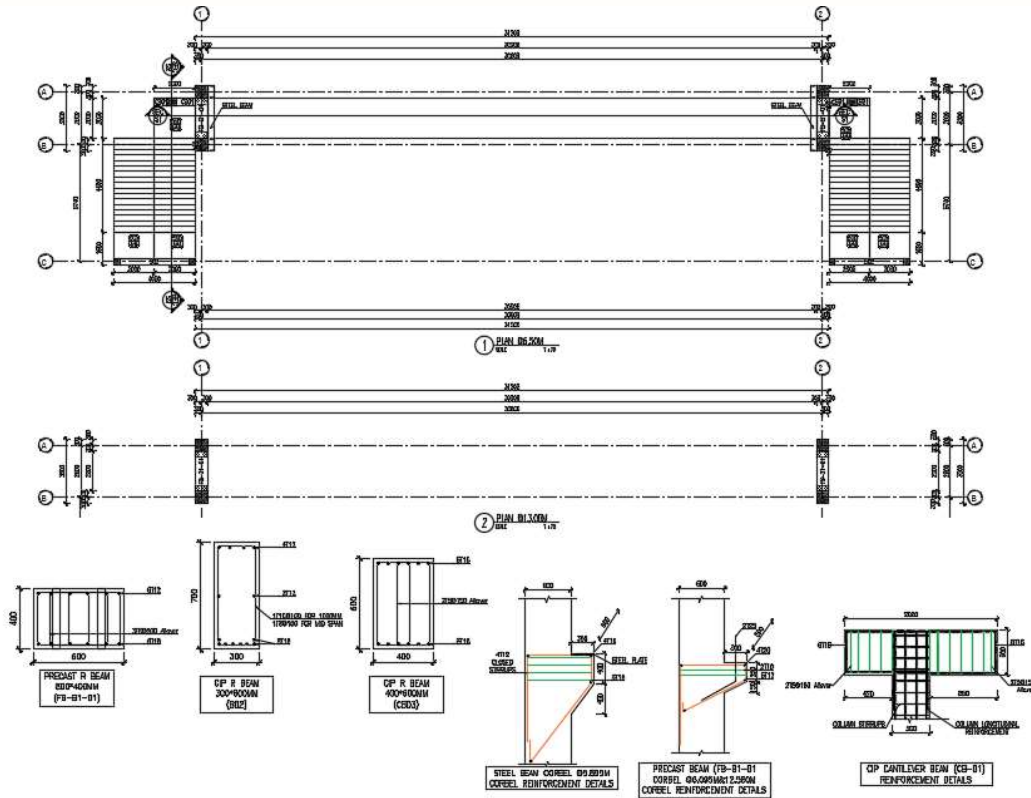
Foundations Table													
Foundation Name	P.C Dimensions			R.C Dimensions			Pier Dimensions			Bottom Reinforcement/m			NOTES
	W <sub>1</sub>	W <sub>2</sub>	W <sub>3</sub>	H <sub>1</sub>	H <sub>2</sub>	H <sub>3</sub>	L <sub>1</sub>	L <sub>2</sub>	L <sub>3</sub>	Long St.	Short St.	Long St.	
FB-F1-B1	2800	1800	200mm	2400	2400	450mm	1300	1300	1300	6/16/m	8/16/m	3/16/m	PRECAST FOOTING
F2	8400	2900	200mm	6000	2900	450mm	---	---	---	4/14/m	4/14/m	4/14/m	CIP FOOTING
F3	2400	1400	200mm	2000	1000	450mm	---	---	---	5/12/m	5/12/m	---	CIP FOOTING
F4	2000	1800	200mm	1800	1600	450mm	---	---	---	4/14/m	4/14/m	---	CIP FOOTING



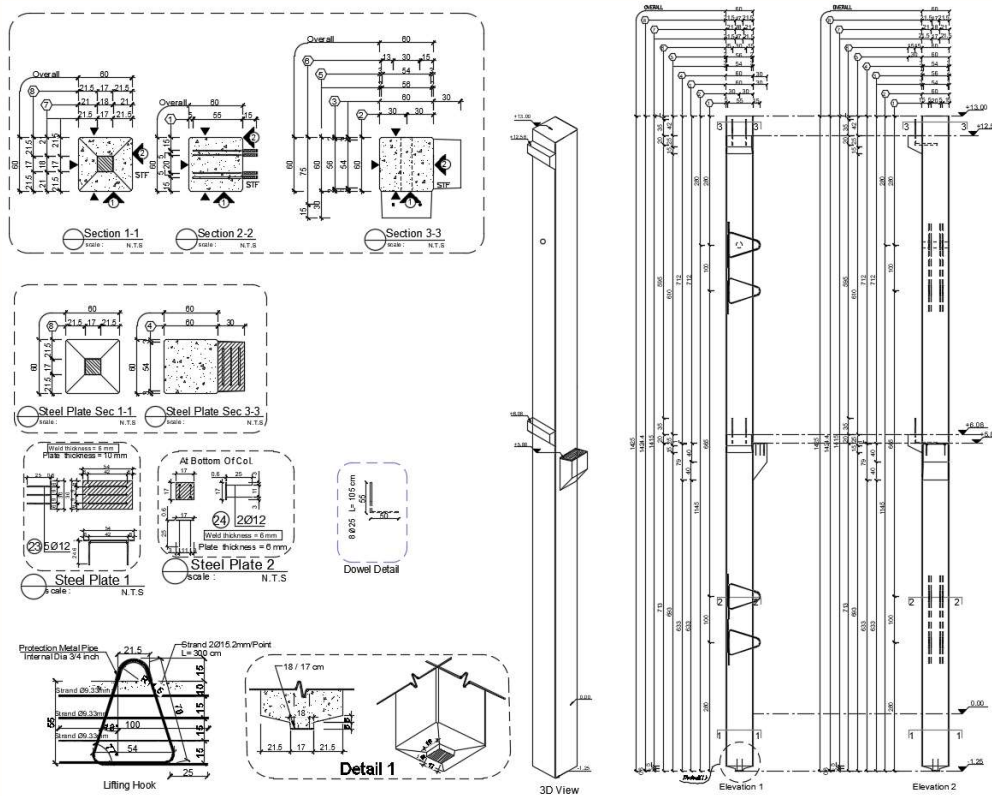
Foundation Plan (Precast Footbridge 30m).

**WE BUILD WITH VALUE**





Floor Plan & Reinforcement details (Precast Footbridge 30m).



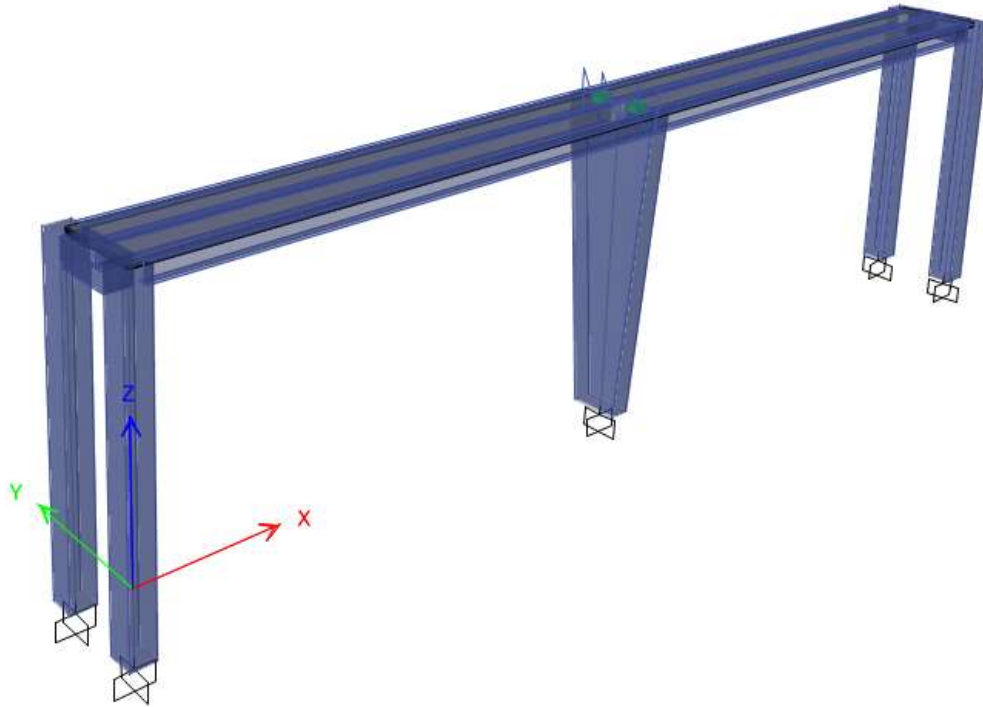
Precast Columns S.D (Precast Footbridge 30m).

**WE BUILD WITH VALUE**

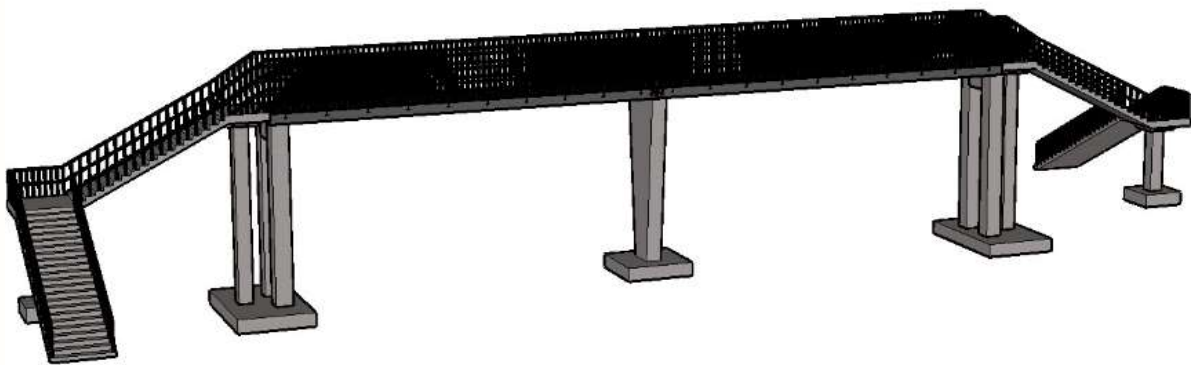
### Structural design for cip footbridge 14M (LIBYA).

Scope of work is to design all structural concrete elements in different buildings in compliance with the architectural requirements and to provide a complete technical report with all the calculations including lateral loads as per ACI code.

ETERNAL was responsible for Structural design of all the project elements and preparing a technical report & structural drawings for approval.

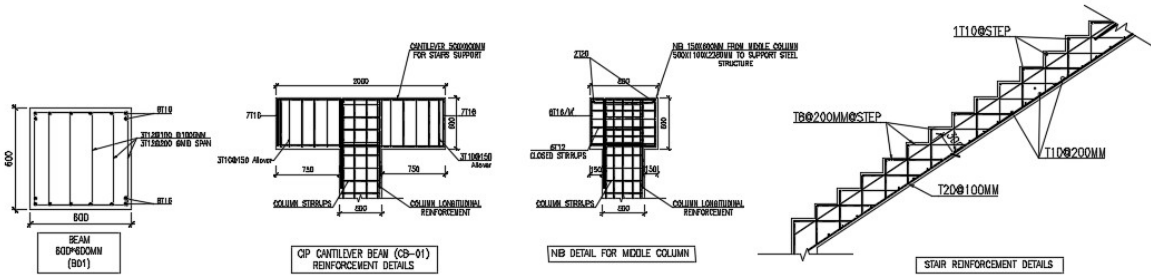
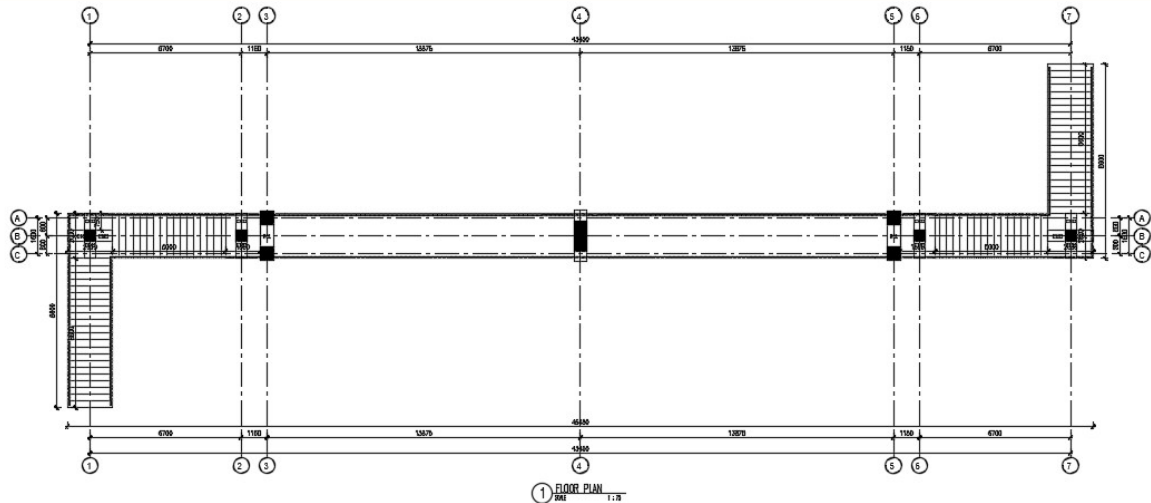


Etabs 3d Model (Footbridge 14m)

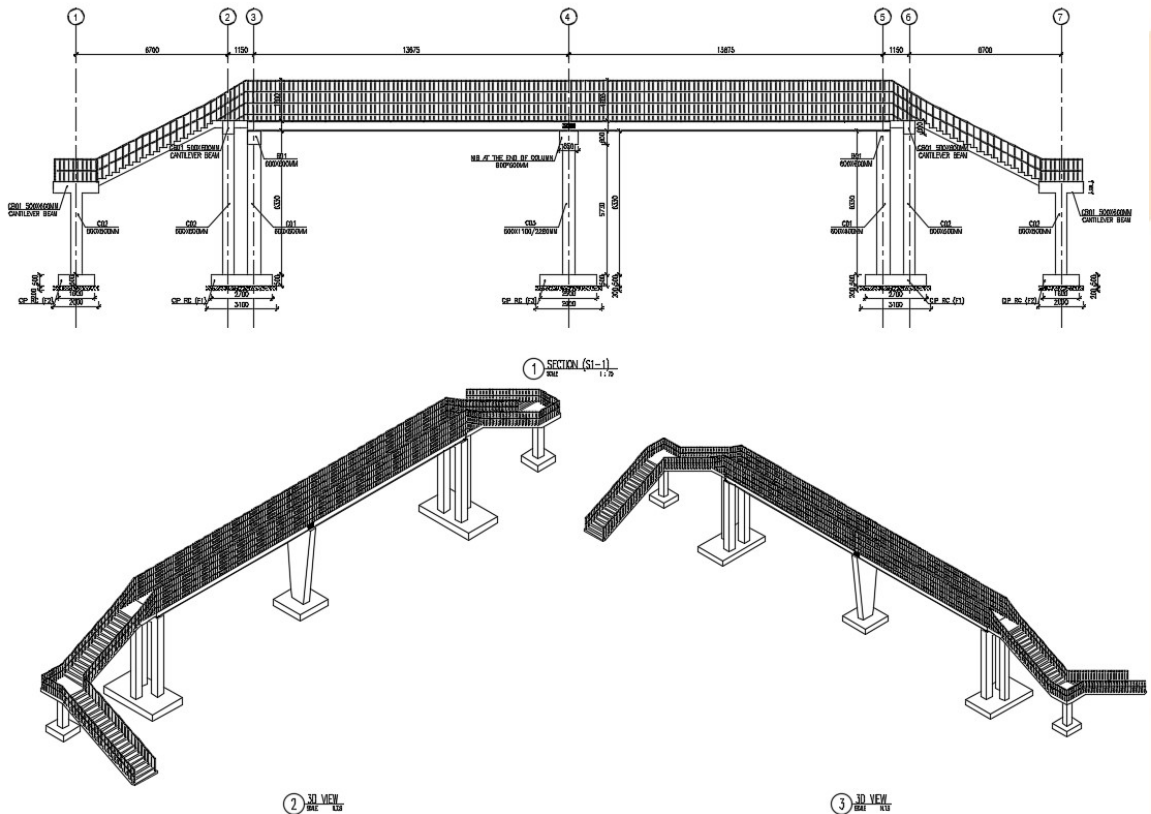


3d Model (Footbridge 14m)

**WE BUILD WITH VALUE**



Floor Plan & Reinforcement details (Footbridge 14m).



Sections (Footbridge 14m).

**WE BUILD WITH VALUE**

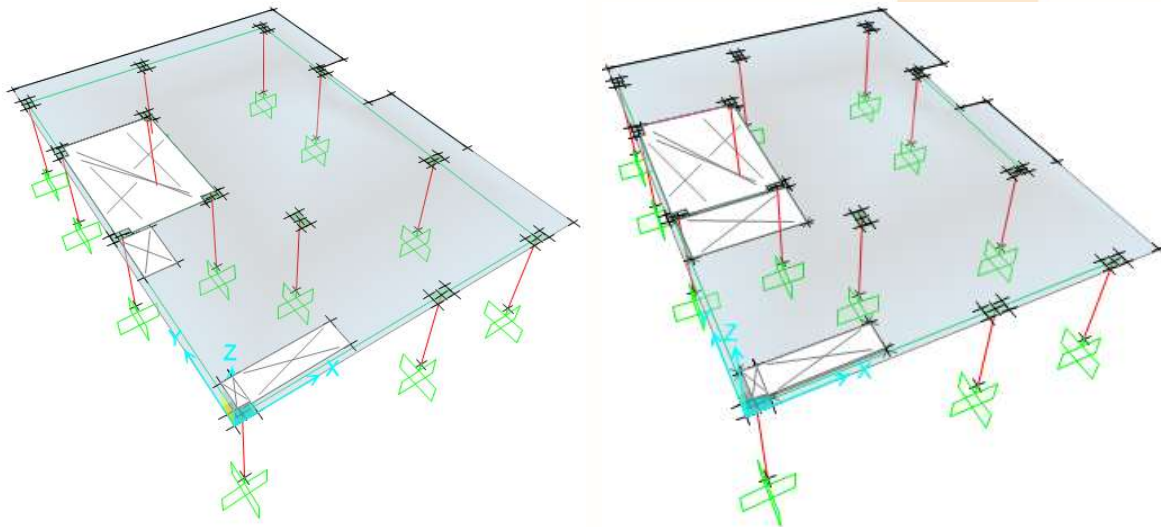


## 7- VARIOUS STRUCTURAL DESIGNS FOR RESIDENTIAL BUILDINGS IN EGYPT.

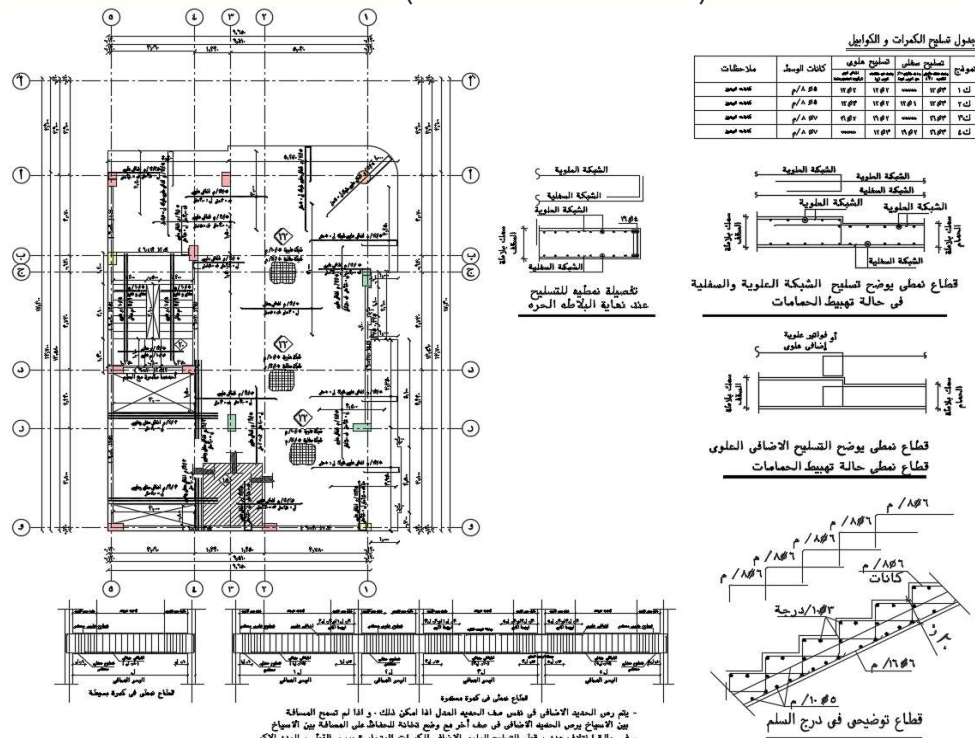
ETERNAL | has designed and supervised various residential buildings Scope of work is to design all structural concrete elements in different buildings in compliance with the architectural requirements and to provide a complete technical report with all the calculations including lateral loads as per ECP code.

ETERNAL was responsible for Structural design of projects building, tanks and preparing a technical report & structural drawings for approval.

## Structural design for residential villa (El-Mehla).



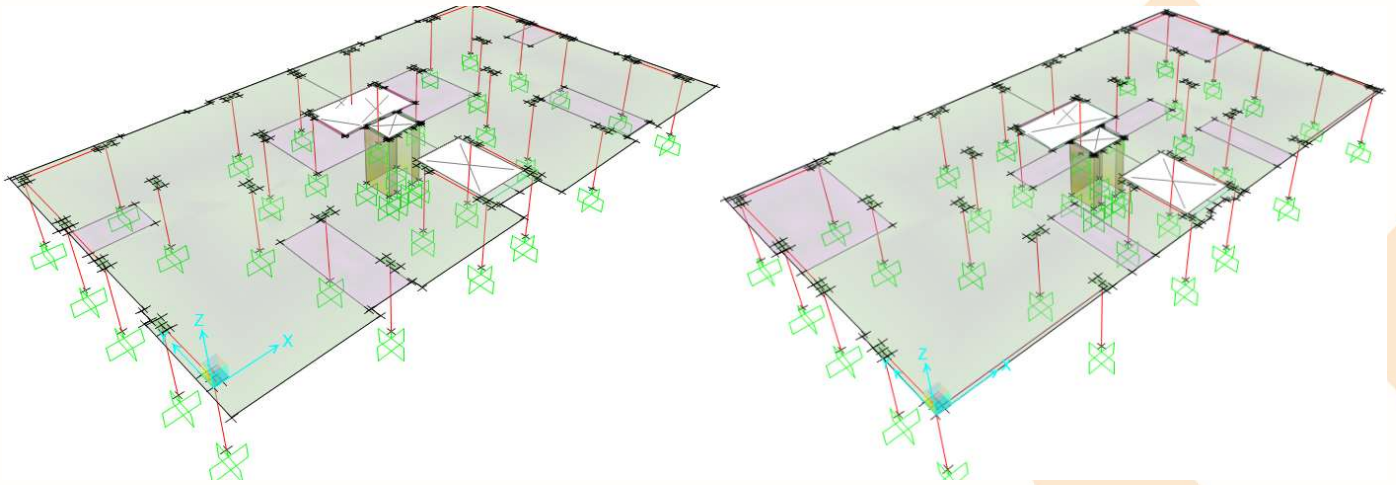
Safe model (Residential Villa El-Mehla).



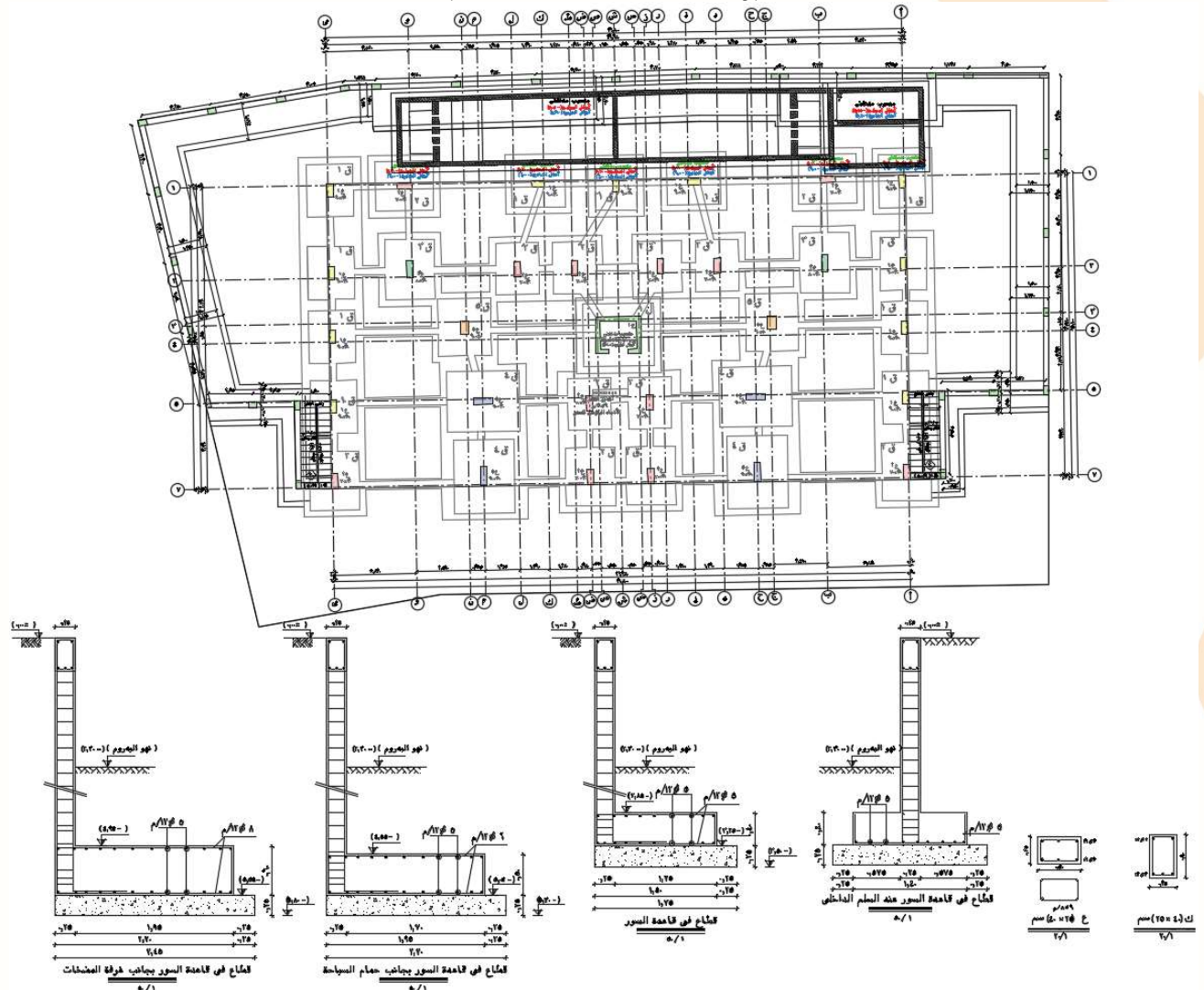
Typical floor plan (Residential Villa in El-Mehla).

## WE BUILD WITH VALUE

## Structural design for residential villa Plot 759\_Zone 5 (Sadat City).



Safe model (Residential Villa in Sadat City).



Typical floor plan (Residential Villa in Sadat City).

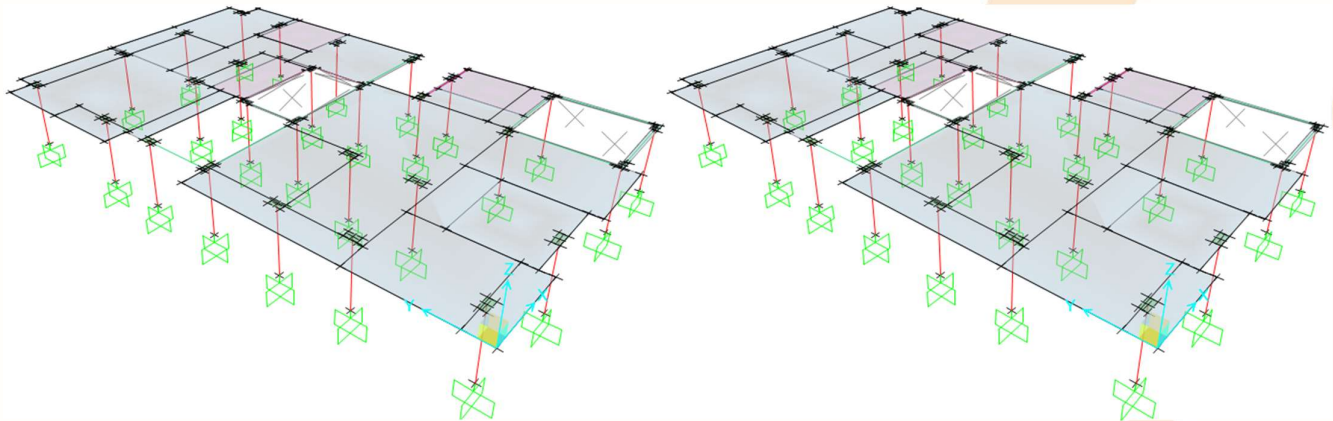
**WE BUILD WITH VALUE**





Work Progress for the residential villa.

### Architectural & Structural design for residential villa Plot 1317\_Zone 29 (Sadat City).



Safe model (Residential Villa in Sadat City).

**WE BUILD WITH VALUE**



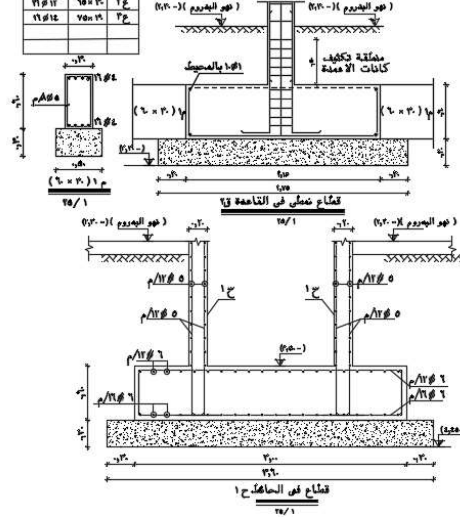
جدول تصليح القواعد

موجود	خرسانية مائية	خرسانية رافعة	خرسانية مشيطة	الصلب الجاف	الصلب العادي
مؤلف	مؤلف	مؤلف	مؤلف	مؤلف	مؤلف
ق 1	—	—	—	—	—
ق 2	—	—	—	—	—
ق 3	—	—	—	—	—
ق 4	—	—	—	—	—
ق 5	—	—	—	—	—
ق 6	—	—	—	—	—
ق 7	—	—	—	—	—
ق 8	—	—	—	—	—
ق 9	—	—	—	—	—
ق 10	—	—	—	—	—
ق 11	—	—	—	—	—
ق 12	—	—	—	—	—
ق 13	—	—	—	—	—
ق 14	—	—	—	—	—
ق 15	—	—	—	—	—
ق 16	—	—	—	—	—
ق 17	—	—	—	—	—
ق 18	—	—	—	—	—
ق 19	—	—	—	—	—
ق 20	—	—	—	—	—
ق 21	—	—	—	—	—
ق 22	—	—	—	—	—
ق 23	—	—	—	—	—
ق 24	—	—	—	—	—
ق 25	—	—	—	—	—
ق 26	—	—	—	—	—
ق 27	—	—	—	—	—
ق 28	—	—	—	—	—
ق 29	—	—	—	—	—
ق 30	—	—	—	—	—
ق 31	—	—	—	—	—
ق 32	—	—	—	—	—
ق 33	—	—	—	—	—
ق 34	—	—	—	—	—
ق 35	—	—	—	—	—
ق 36	—	—	—	—	—
ق 37	—	—	—	—	—
ق 38	—	—	—	—	—
ق 39	—	—	—	—	—
ق 40	—	—	—	—	—
ق 41	—	—	—	—	—
ق 42	—	—	—	—	—
ق 43	—	—	—	—	—
ق 44	—	—	—	—	—
ق 45	—	—	—	—	—
ق 46	—	—	—	—	—
ق 47	—	—	—	—	—
ق 48	—	—	—	—	—
ق 49	—	—	—	—	—
ق 50	—	—	—	—	—
ق 51	—	—	—	—	—
ق 52	—	—	—	—	—
ق 53	—	—	—	—	—
ق 54	—	—	—	—	—
ق 55	—	—	—	—	—
ق 56	—	—	—	—	—
ق 57	—	—	—	—	—
ق 58	—	—	—	—	—
ق 59	—	—	—	—	—
ق 60	—	—	—	—	—
ق 61	—	—	—	—	—
ق 62	—	—	—	—	—
ق 63	—	—	—	—	—
ق 64	—	—	—	—	—
ق 65	—	—	—	—	—
ق 66	—	—	—	—	—
ق 67	—	—	—	—	—
ق 68	—	—	—	—	—
ق 69	—	—	—	—	—
ق 70	—	—	—	—	—
ق 71	—	—	—	—	—
ق 72	—	—	—	—	—
ق 73	—	—	—	—	—
ق 74	—	—	—	—	—
ق 75	—	—	—	—	—
ق 76	—	—	—	—	—
ق 77	—	—	—	—	—
ق 78	—	—	—	—	—
ق 79	—	—	—	—	—
ق 80	—	—	—	—	—
ق 81	—	—	—	—	—
ق 82	—	—	—	—	—
ق 83	—	—	—	—	—
ق 84	—	—	—	—	—
ق 85	—	—	—	—	—
ق 86	—	—	—	—	—
ق 87	—	—	—	—	—
ق 88	—	—	—	—	—
ق 89	—	—	—	—	—
ق 90	—	—	—	—	—
ق 91	—	—	—	—	—
ق 92	—	—	—	—	—
ق 93	—	—	—	—	—
ق 94	—	—	—	—	—
ق 95	—	—	—	—	—
ق 96	—	—	—	—	—
ق 97	—	—	—	—	—
ق 98	—	—	—	—	—
ق 99	—	—	—	—	—
ق 100	—	—	—	—	—

جدول تسليح المهد

تاریخ	محل	تاریخ	تاریخ	تاریخ
	۱۳۸۵	۱۳۸۵	۱۳۸۵	۱۳۸۵

جميع المبيعات نموذج ١٠ (٦٠ x ٦٠) ما لم يذكر خلاف ذلك على الرسومات



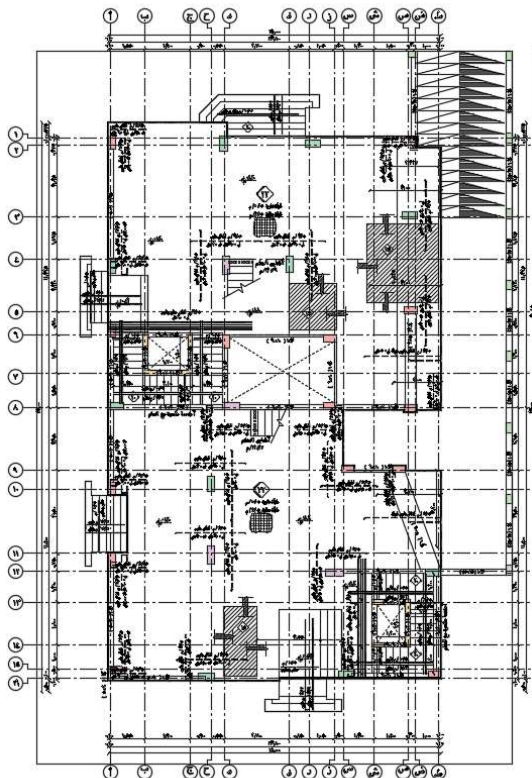
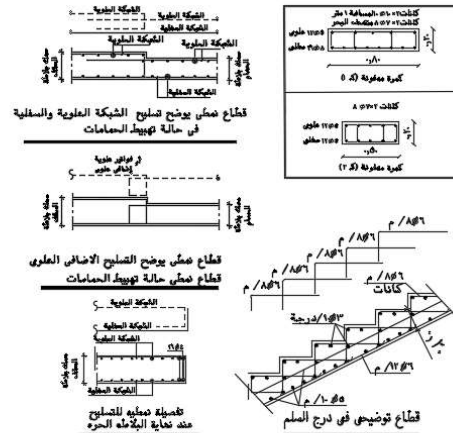
Foundations plan (Residential Villa in Sadat City).

توليد الطاقة الكهربائية والكواويل

[illegible]

**عول ضائع الكموات المدفوعة**

ردیف	شرح	مبلغ ریالی		مبلغ دلاری		ملاحظات
		درآمد	هزینه	درآمد	هزینه	
۱.	حسابان	۱۰۰	۱۰۰	۱۰۰	۱۰۰	
۲.	حسابان	۱۰۰	۱۰۰	۱۰۰	۱۰۰	

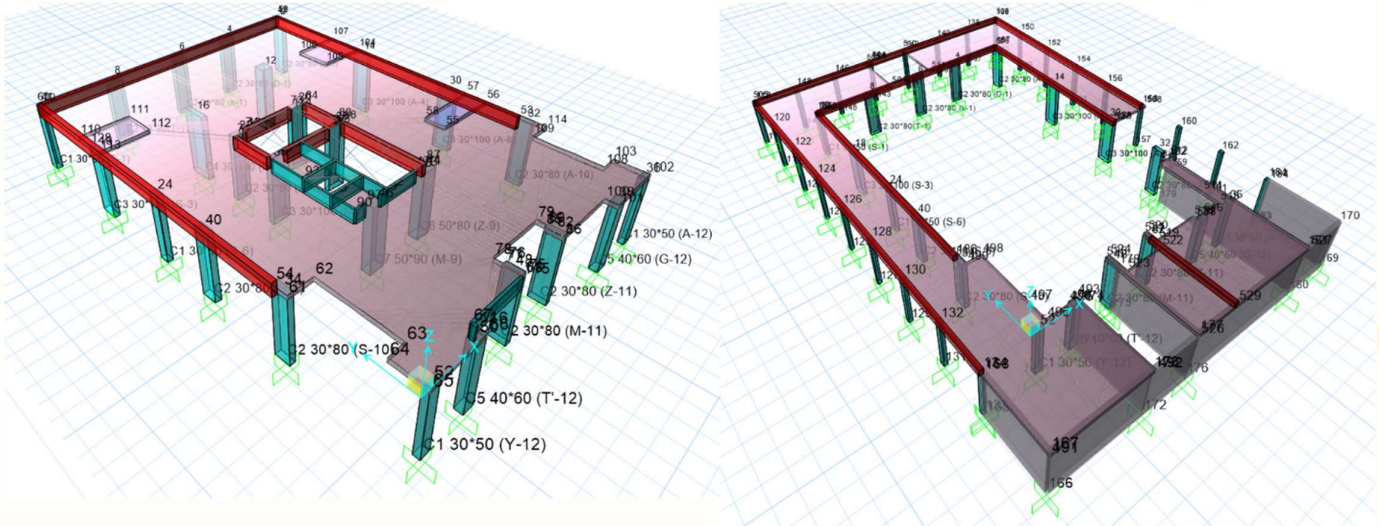


Ground floor plan (Residential Villa in Sadat City).

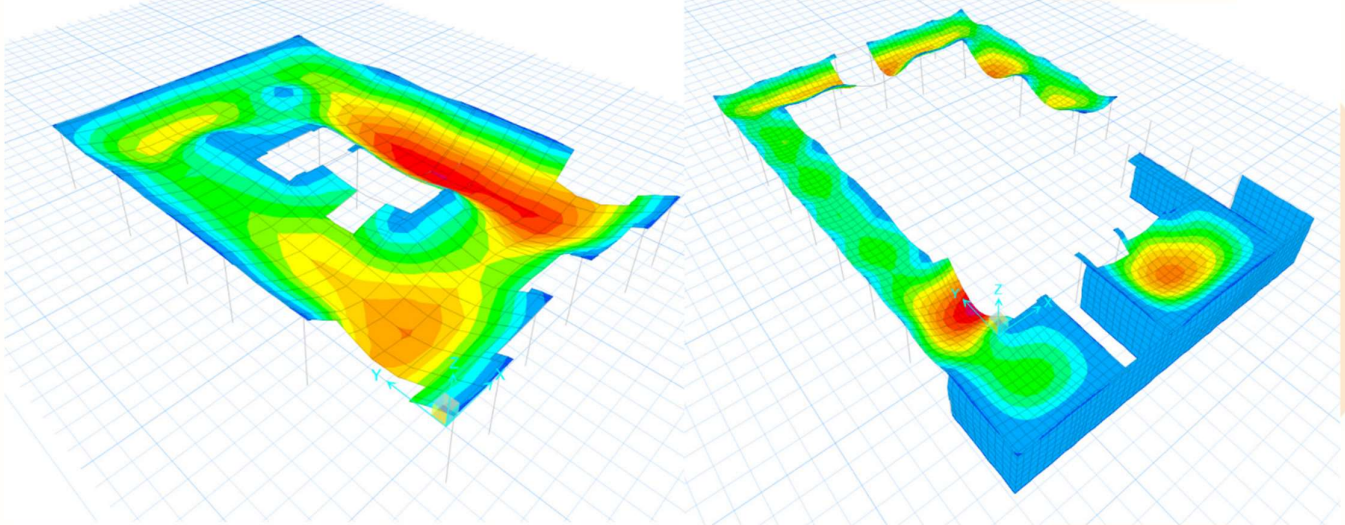
## WE BUILD WITH VALUE



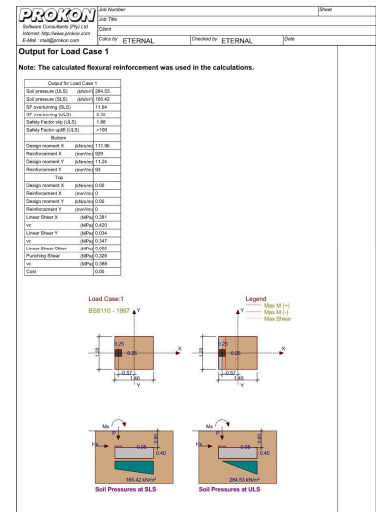
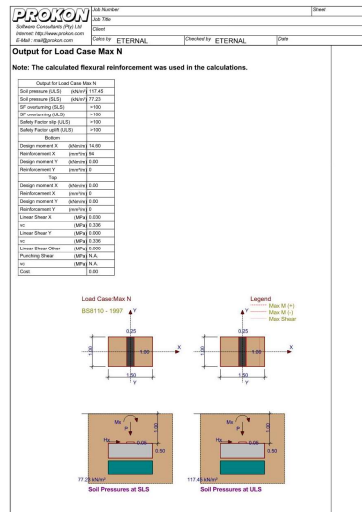
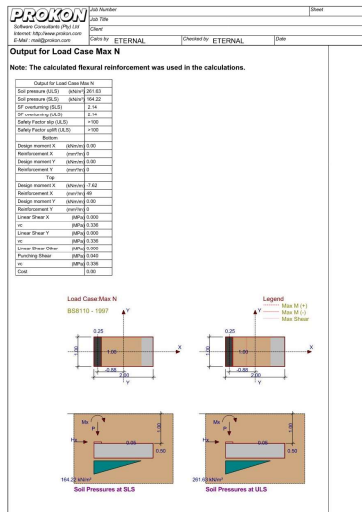
## Structural design for residential Building Plot 80\_Zone 8 Beet El-Watn (5th Settlement).



Safe model (Residential Building in 5<sup>th</sup> Settlement).

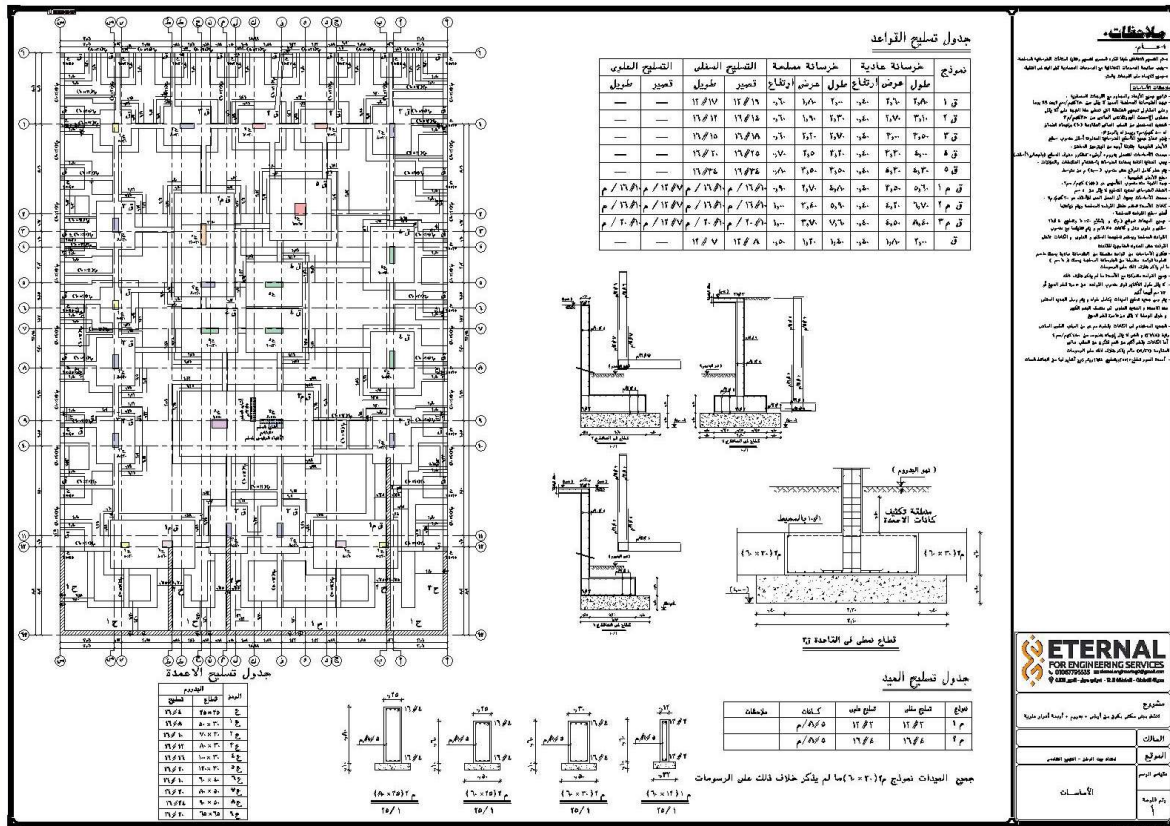


Safe Deformed Shape (Residential Building in 5<sup>th</sup> Settlement).

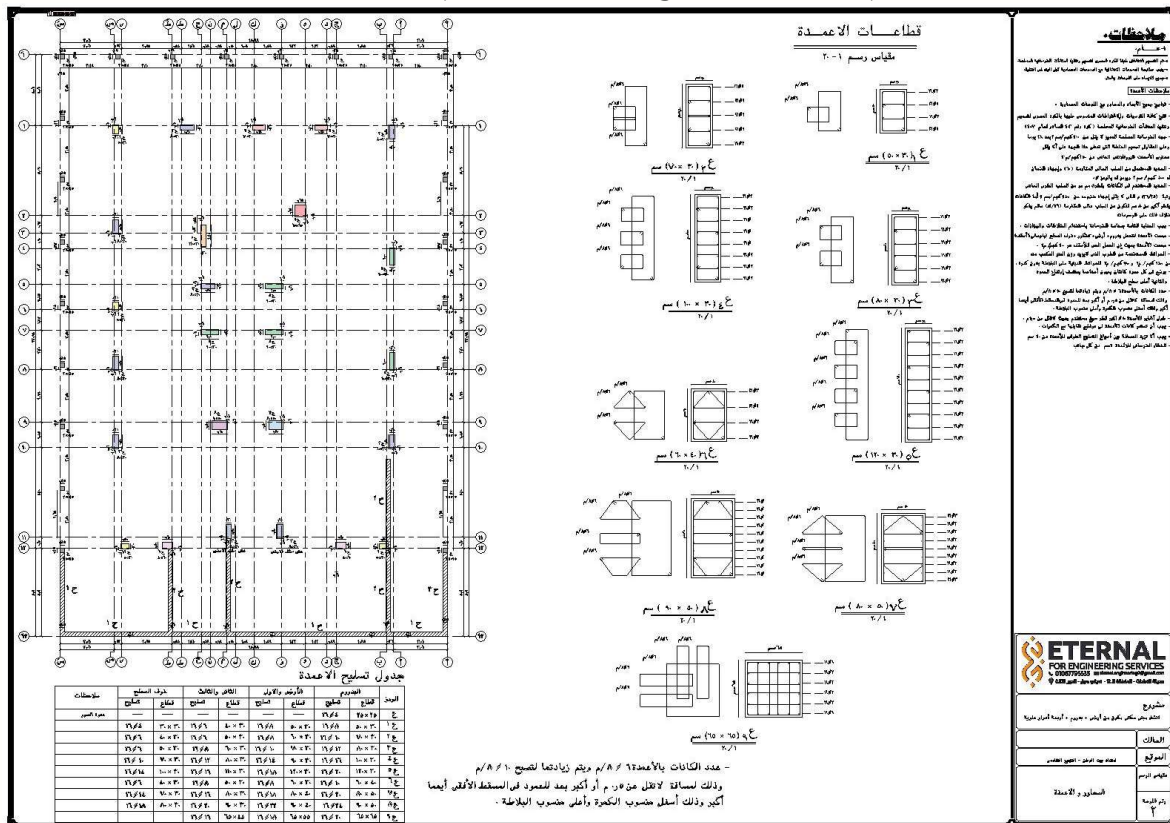


Prokon Foundations Design (Residential Building in 5<sup>th</sup> Settlement).

**WE BUILD WITH VALUE**

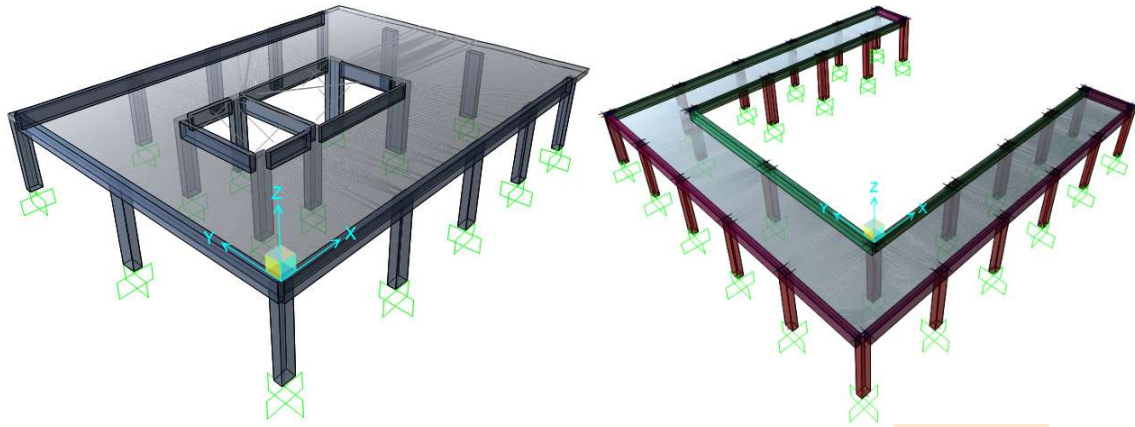


Foundations Plan (Residential Building in 5<sup>th</sup> Settlement).

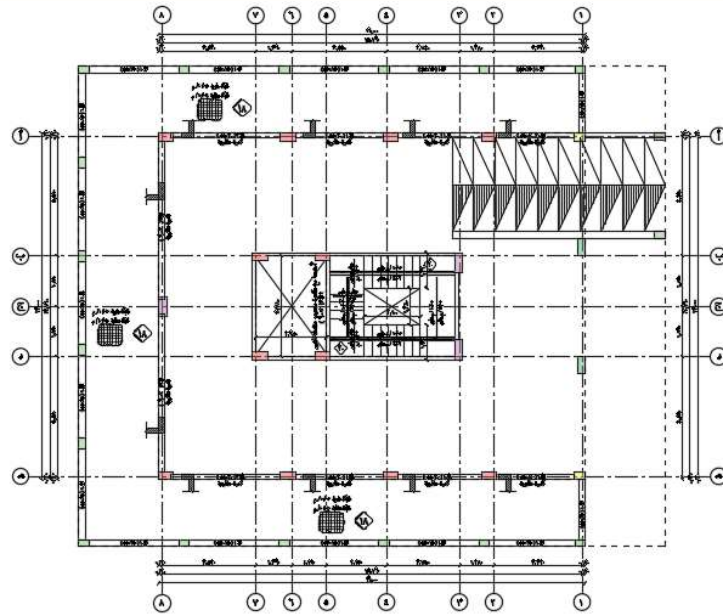
Columns Plan (Residential Building in 5<sup>th</sup> Settlement).



## Architectural & Structural design for residential villa Plot 193\_Zone 36 (Sadat City).

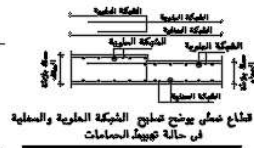
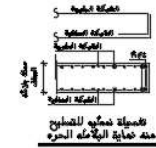
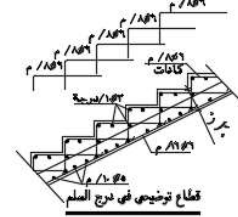


Safe model (Residential Building in Sadat City).



**جدول تسليح الكمرات و الكوابيل**

ملاحظات	كلبات الوحد	تسليح علوي	تسليح سفلي	تسليح محيطي
1 ك	12.00	12.00	12.00	12.00
2 ك	12.00	12.00	12.00	12.00
3 ك	12.00	12.00	12.00	12.00
4 ك	12.00	12.00	12.00	12.00



- يتم رسم الحديد الانشائي في نفس صف الحديد المصلد اذا أمكن ذلك ، و اذا لم تصبح المسافة بين الاسياخ يدرس الحديد الانشائي في صف آخر مع وضع فتحات للمفاصل على المسافة بين الاسياخ  
- في حالة اختلاف هذه و قطر التسليح السابق الانشائي للكمرات المجاورة يسرى القطر و العدد الأكبر  
- تضاعف الكانات في جميع الكمرات المجاورة للركيزة لعسافة 100 متر من وجهة الركيزة

Walkway floor plan (Residential Villa in Sadat City).





**WE BUILD WITH VALUE**





Work Progress for the residential villa.

**WE BUILD WITH VALUE**



## 8- EXTERIOR DESIGN

At our company, we specialize in \*Exterior Design\*, delivering innovative and functional solutions that stand out in the market. We've completed a wide range of projects, each reflecting our commitment to quality and creativity. Our designs not only enhance the aesthetics of a building but also integrate seamlessly with the surrounding environment.

We take pride in our ability to manage every aspect of the design process, from concept development to detailed execution. Our team provides comprehensive \*shop drawings\* and \*as-built documentation\*, ensuring that every project is executed with precision and aligns with the client's vision.

Today, we'll be showcasing some samples of our work, highlighting the diverse range of exterior designs we've accomplished.

### Exterior design for a Bank. (Fayoum, Egypt).



Exterior 3D Shot (Bank).

**WE BUILD WITH VALUE**



Exterior 3D Shot (Bank).



Exterior 3D Shot (Bank).

**WE BUILD WITH VALUE**





Exterior 3D Shot (Bank).

### Exterior design for a Hospital. (Fayoum, Egypt).



Exterior 3D Shot (Hospital).

**WE BUILD WITH VALUE**





Exterior 3D Shot (Hospital).



Exterior 3D Shot (Hospital).

**WE BUILD WITH VALUE**



Exterior 3D Shot (Hospital).

**Exterior design for a Mall. (Fayoum, Egypt).**



**WE BUILD WITH VALUE**

Exterior 3D Shot (Mall).



Exterior 3D Shot (Mall).

**WE BUILD WITH VALUE**





Exterior 3D Shot (Mall).



Exterior 3D Shot (Mall).

Exterior design for a residential Villa. (El-Mehla, Egypt).

**WE BUILD WITH VALUE**



Exterior 3D Shot (Villa).



Exterior 3D Shot (Villa).

**WE BUILD WITH VALUE**





Exterior 3D Shot (Villa).

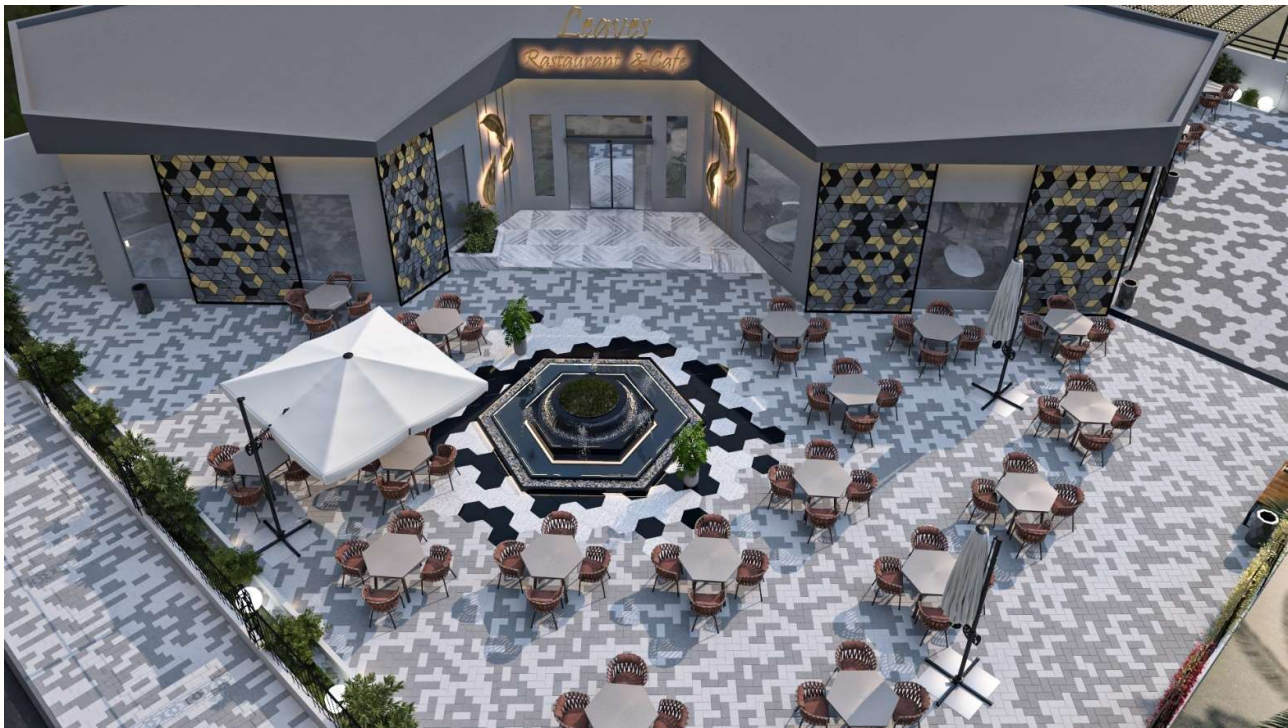


Exterior 3D Shot (Villa).

**WE BUILD WITH VALUE**



**Exterior design for Leaves Cafe. (Sadat City, Egypt).**



Exterior 3D Shot (Leaves Cafe).



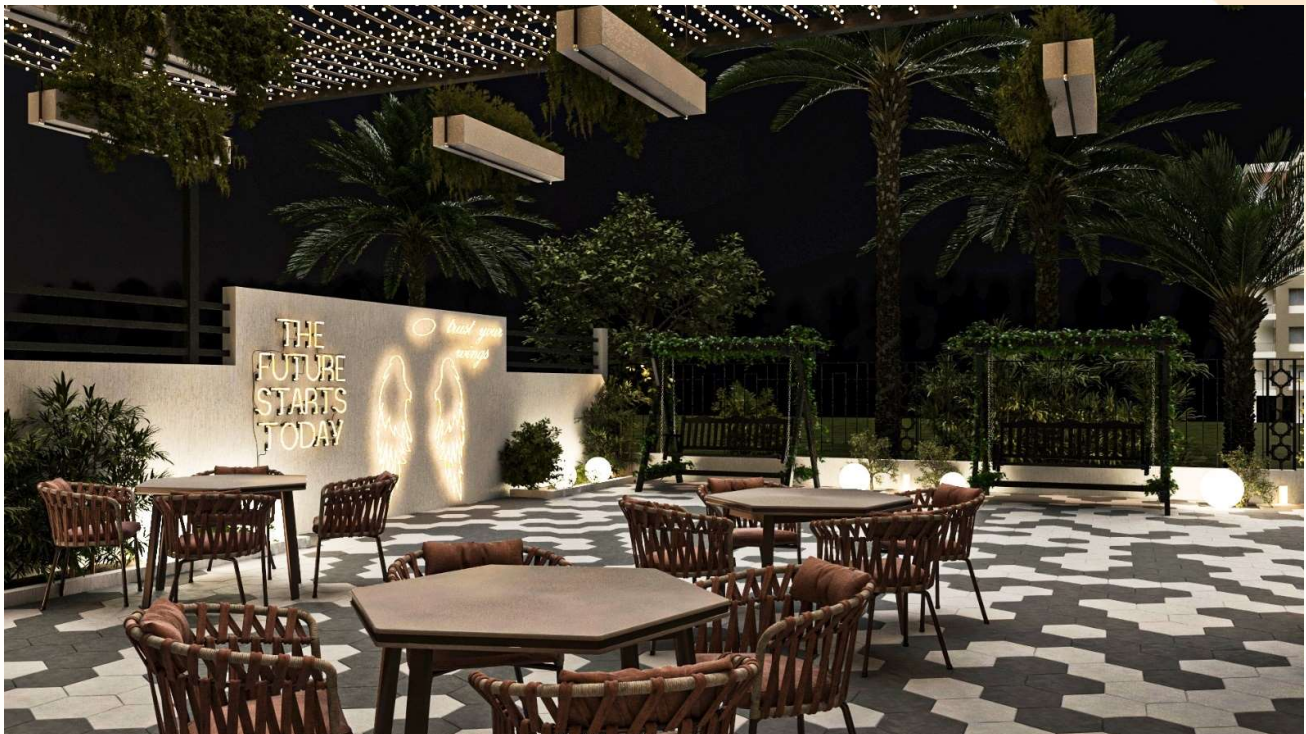
Exterior 3D Shot (Leaves Cafe).

**WE BUILD WITH VALUE**





Exterior 3D Shot (Leaves Cafe).



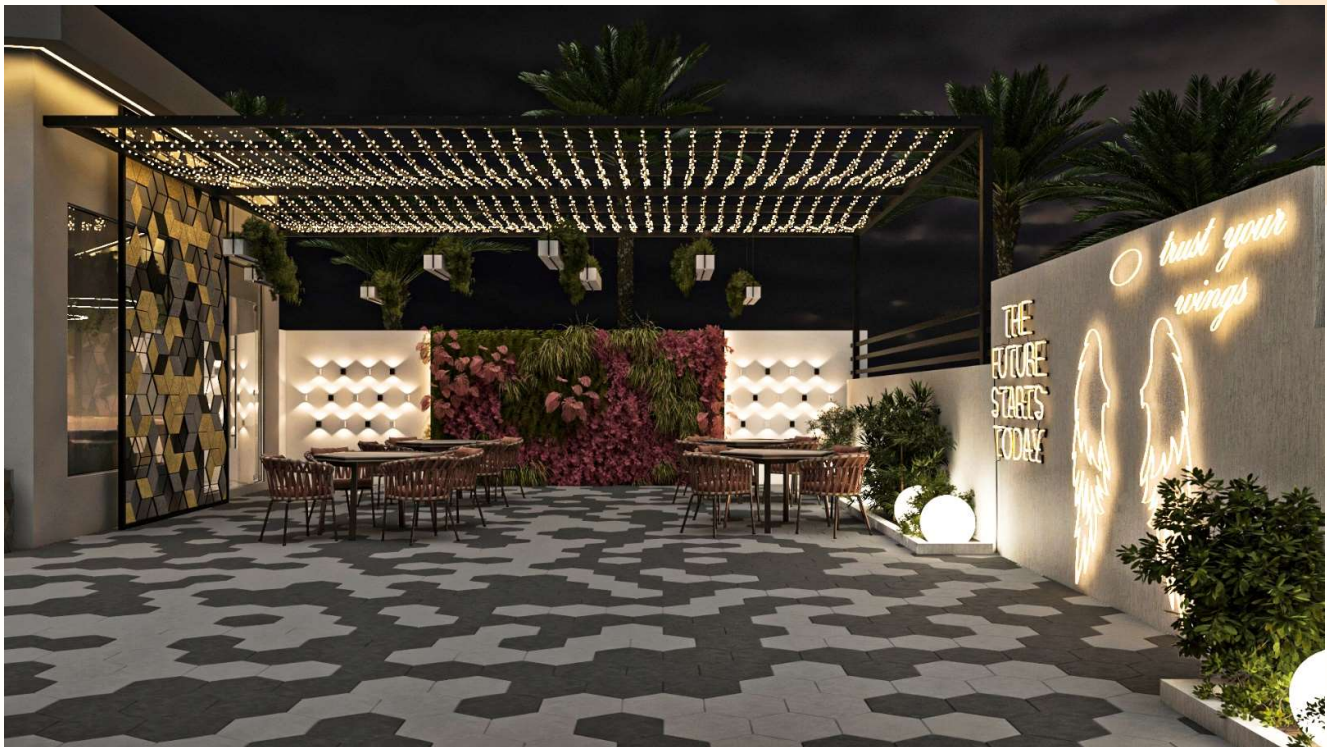
Exterior 3D Shot (Leaves Cafe).

**WE BUILD WITH VALUE**





Exterior 3D Shot (Leaves Cafe).

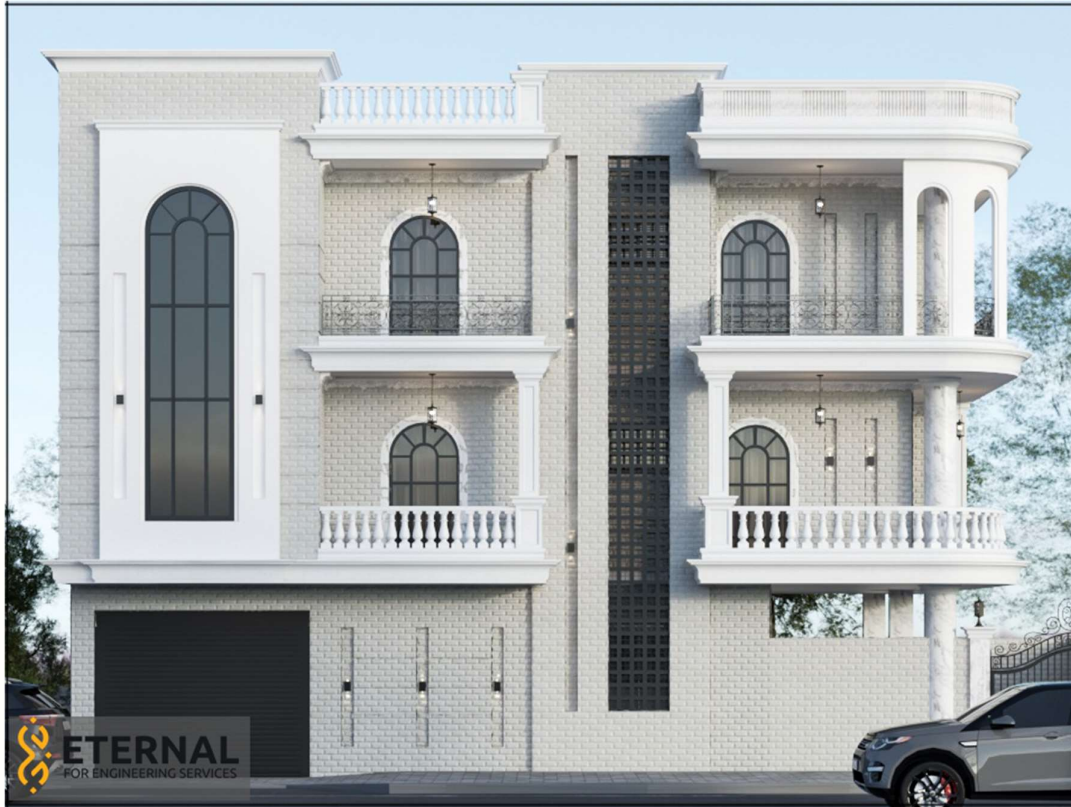


Exterior 3D Shot (Leaves Cafe).

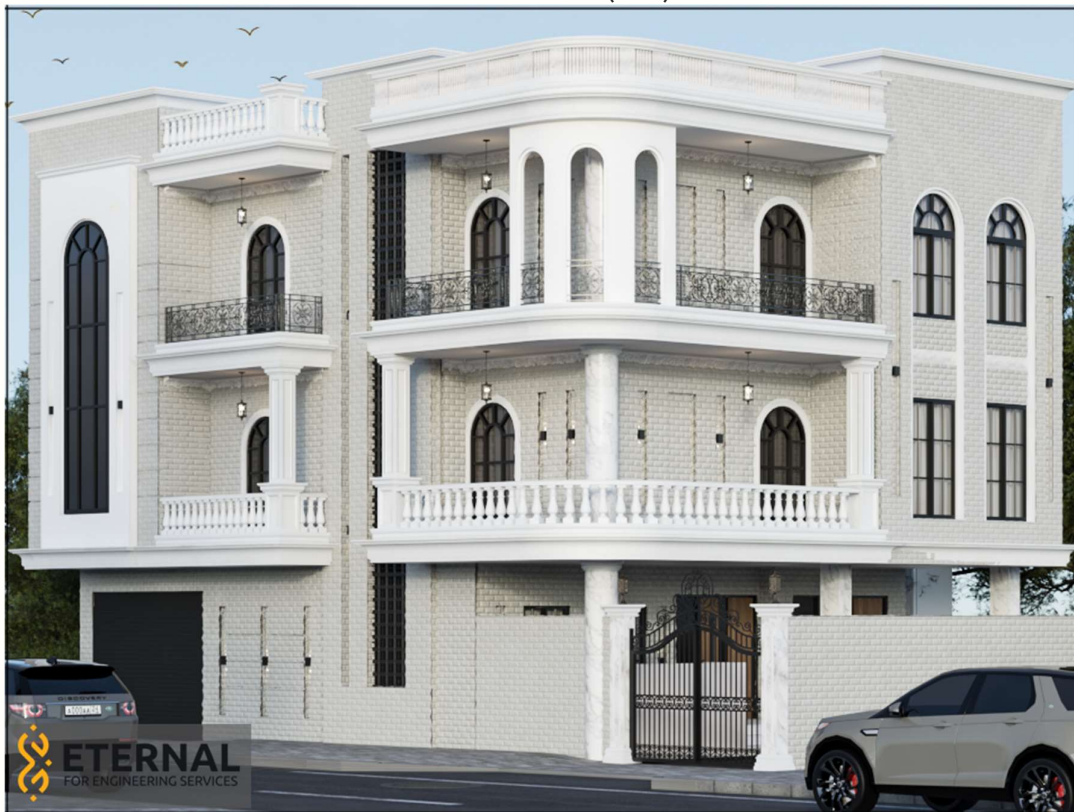
**WE BUILD WITH VALUE**



**Exterior design for a residential Villa. (El-Mehla, Egypt).**



Exterior 3D Shot (Villa).



Exterior 3D Shot (Villa).

**WE BUILD WITH VALUE**



Exterior 3D Shot (Villa).



Exterior 3D Shot (Villa).

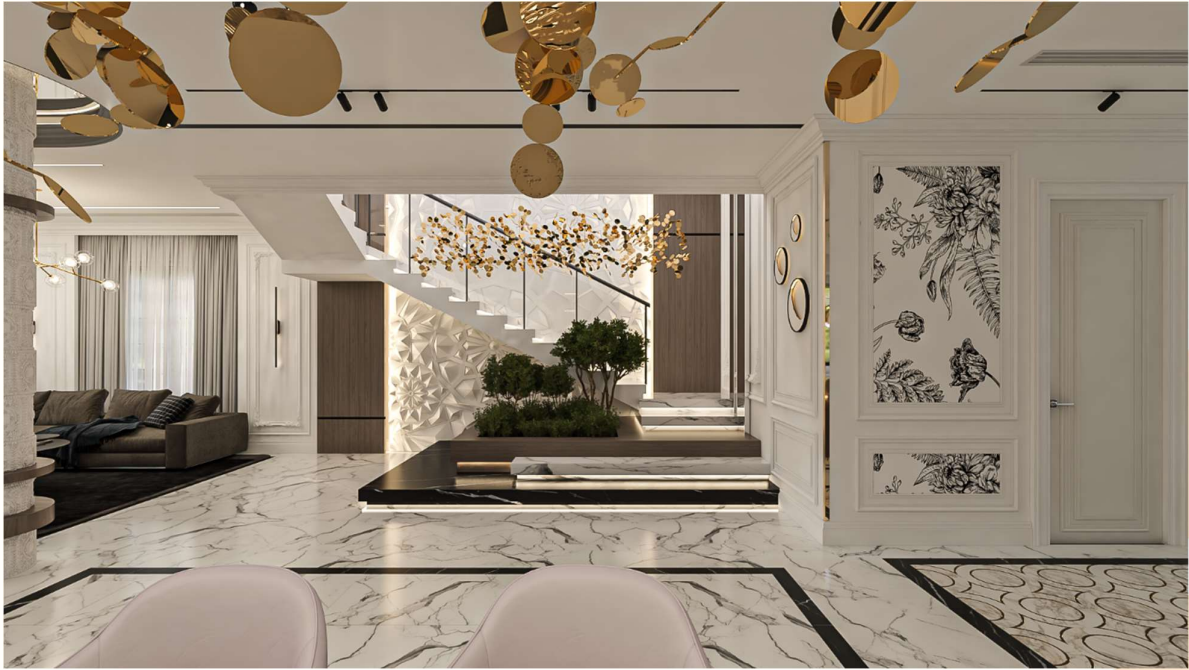
**WE BUILD WITH VALUE**



## 9- INTERIOR DESIGN.

### VILLA V4 . (Lake West Compound, Sheikh Zayed, Egypt)

Scope of work is to Provide the following design concept, Rendering Design (Interior 3D Perspectives), Furniture Plans, Flooring Plans, Reflected Ceiling Plans, Lighting Plans, Electricity Plans, Sanitary plans, Internal Elevations and Sections, Technical Details (Sanitary, Electricity, Lighting, Flooring Plans, etc...)



Reception Interior 3D Shot.

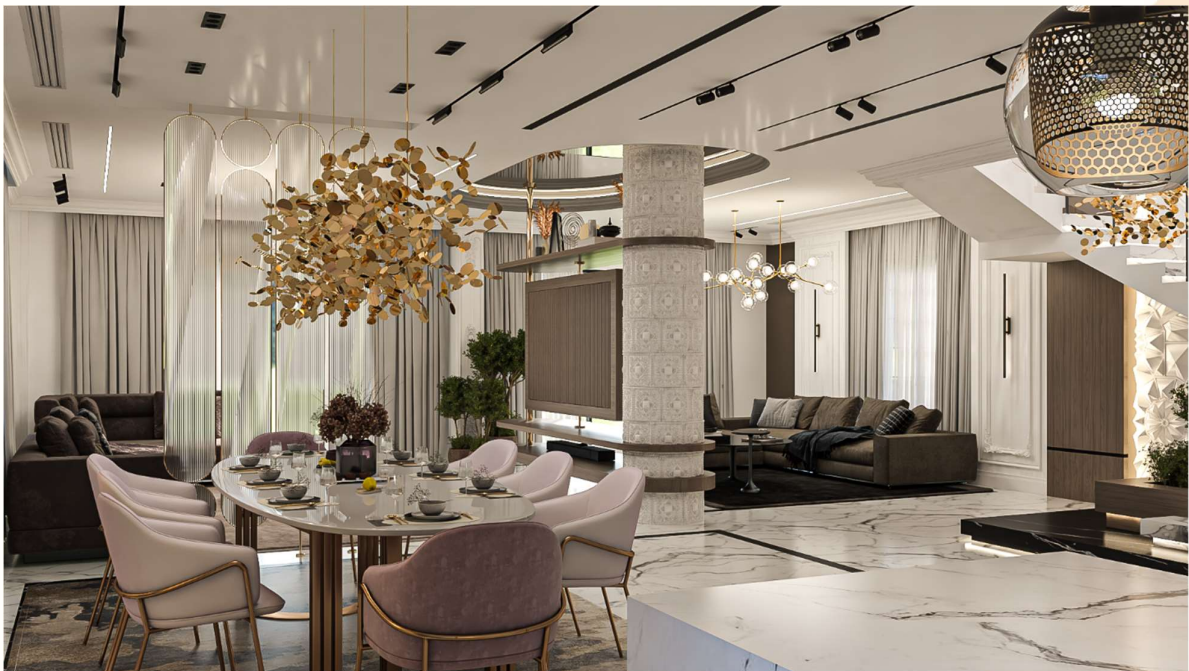


Reception Interior 3D Shot.

**WE BUILD WITH VALUE**



Reception Interior 3D Shot.



Reception Interior 3D Shot.

**WE BUILD WITH VALUE**





Reception Interior 3D Shot.



Reception Interior 3D Shot.

**WE BUILD WITH VALUE**



Reception Interior 3D Shot.



Master Bedroom Interior 3D Shot.

**WE BUILD WITH VALUE**





Master Bedroom Interior 3D Shot.

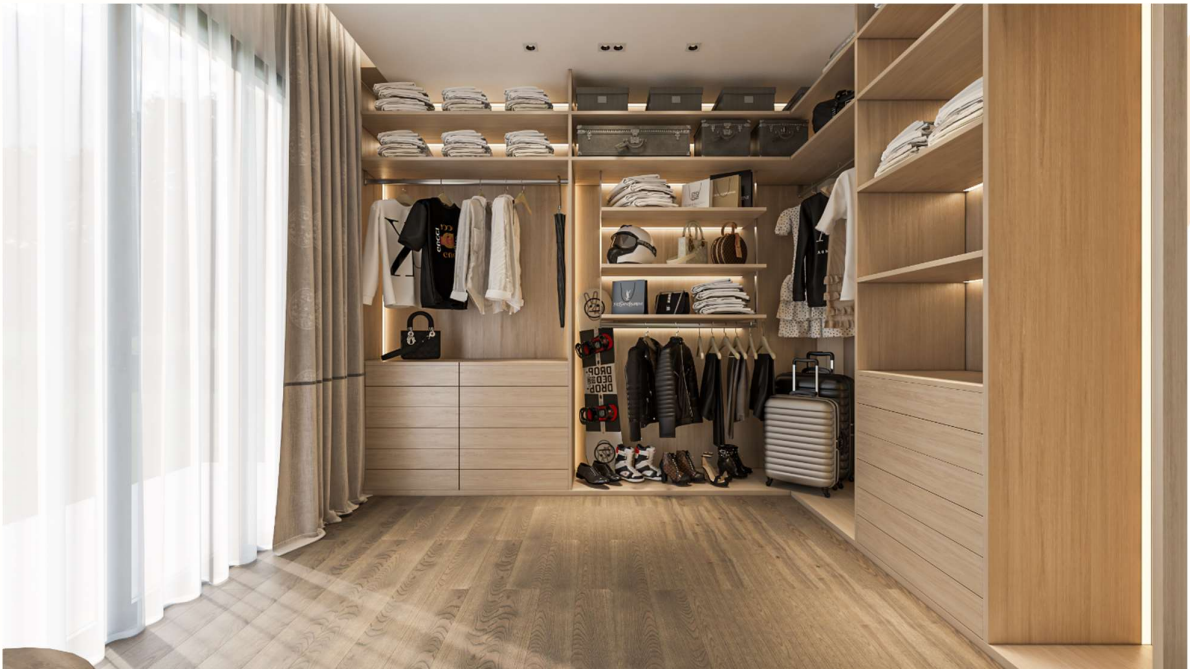


Master Bedroom Interior 3D Shot.

**WE BUILD WITH VALUE**



Master Bedroom Interior 3D Shot.



Master Bedroom Interior 3D Shot.

**WE BUILD WITH VALUE**





Master Bedroom Interior 3D Shot.



Master Bathroom Interior 3D Shot.

**WE BUILD WITH VALUE**





Master Bathroom Interior 3D Shot.



Master Bathroom Interior 3D Shot.

**WE BUILD WITH VALUE**





Main Bathroom Interior 3D Shot.

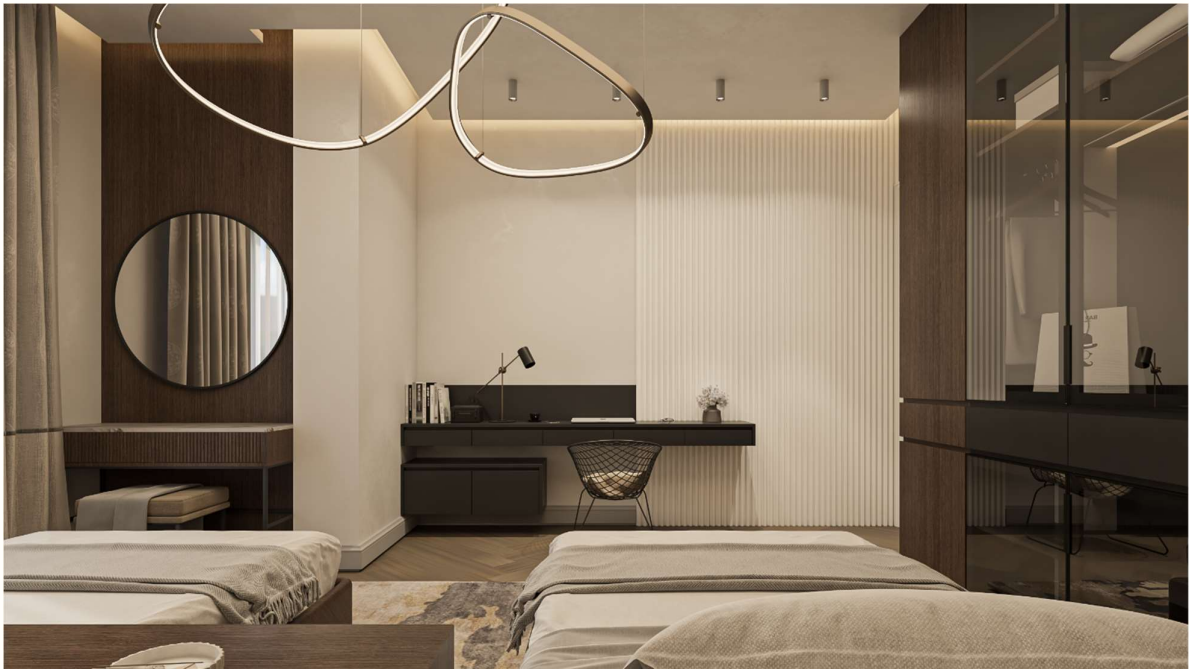


Master Bathroom Interior 3D Shot.

**WE BUILD WITH VALUE**



Kids Bedroom Interior 3D Shot.



Kids Bedroom Interior 3D Shot.

**WE BUILD WITH VALUE**





Kids Bedroom Interior 3D Shot.



Kids Bedroom Interior 3D Shot.

**WE BUILD WITH VALUE**

## VILLA C47 . (Sodic The Estates, Sheikh Zayed, Egypt)

Scope of work is to Provide the following design concept, Rendering Design (Interior 3D Perspectives), Furniture Plans, Flooring Plans, Reflected Ceiling Plans, Lighting Plans, Electricity Plans, Sanitary plans, Internal Elevations and Sections, Technical Details (Sanitary, Electricity, Lighting, Flooring Plans, etc...)



Reception Interior 3D Shot.



Reception Interior 3D Shot.

**WE BUILD WITH VALUE**





Reception Interior 3D Shot.



Reception Interior 3D Shot.

**WE BUILD WITH VALUE**



Reception Interior 3D Shot.



Reception Interior 3D Shot.

**WE BUILD WITH VALUE**





Master Bedroom Interior 3D Shot.



Master Bedroom Interior 3D Shot.

**WE BUILD WITH VALUE**



Master Bedroom Interior 3D Shot.



Master Bedroom Interior 3D Shot.

**WE BUILD WITH VALUE**





Kids Bedroom Interior 3D Shot.



Kids Bedroom Interior 3D Shot.

**WE BUILD WITH VALUE**



Kids Bedroom Interior 3D Shot.



Kids Bedroom Interior 3D Shot.

**WE BUILD WITH VALUE**





Kids Bedroom Interior 3D Shot.



Kids Bedroom Interior 3D Shot.

**WE BUILD WITH VALUE**



Living Room Interior 3D Shot.



Living Room Interior 3D Shot.

**WE BUILD WITH VALUE**





Living Room Interior 3D Shot.



Kitchen Interior 3D Shot.

**WE BUILD WITH VALUE**



Kitchen Interior 3D Shot.



Kitchen Interior 3D Shot.

**WE BUILD WITH VALUE**



## Residential Villa . (Zone 5, Sadat City, Egypt)

Scope of work is to Provide the following design concept, Rendering Design (Interior 3D Perspectives), Furniture Plans, Flooring Plans, Reflected Ceiling Plans, Lighting Plans, Electricity Plans, Sanitary plans, Internal Elevations and Sections, Technical Details (Sanitary, Electricity, Lighting, Flooring Plans, etc...)



Reception Interior 3D Shot.



Reception Interior 3D Shot.

**WE BUILD WITH VALUE**



Reception Interior 3D Shot.



Reception Interior 3D Shot.

**WE BUILD WITH VALUE**





Kitchen Interior 3D Shot.



Kitchen Interior 3D Shot.

**WE BUILD WITH VALUE**



Master Bedroom Interior 3D Shot.



Master Bedroom Interior 3D Shot.

**WE BUILD WITH VALUE**





Master Bedroom Interior 3D Shot.

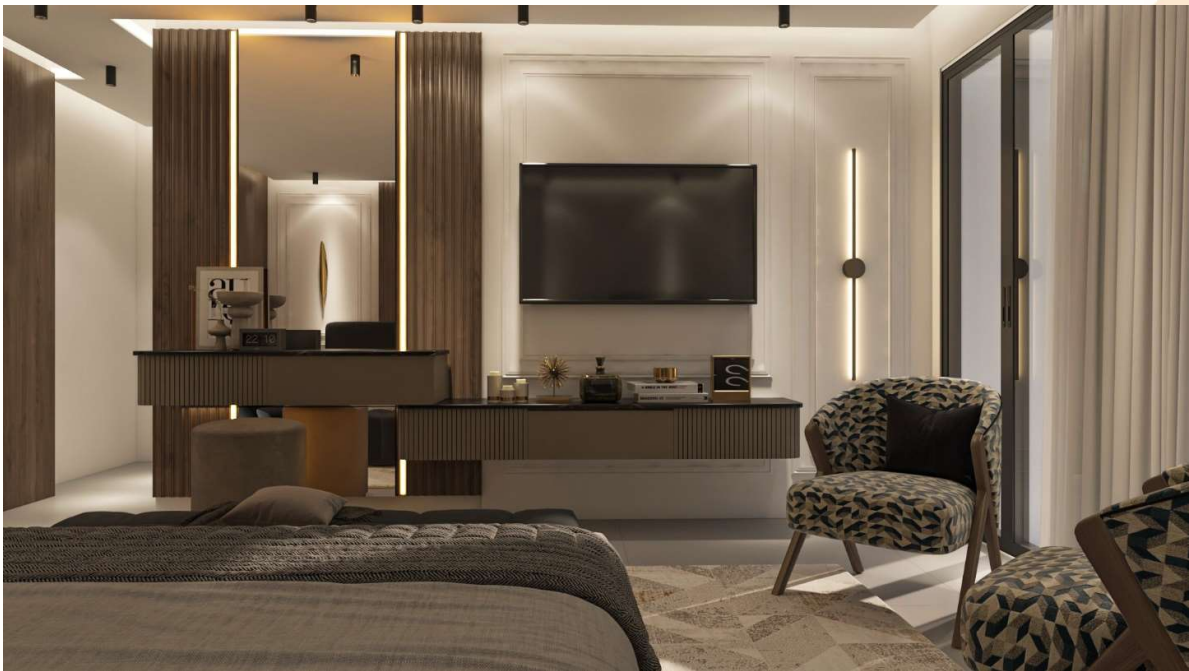


Master Bedroom Interior 3D Shot.

**WE BUILD WITH VALUE**



Master Bedroom Interior 3D Shot.



Master Bedroom Interior 3D Shot.

**WE BUILD WITH VALUE**





Bathroom Interior 3D Shot.



Master Bedroom Interior 3D Shot.

**WE BUILD WITH VALUE**



Kids Bedroom Interior 3D Shot.



Kids Bedroom Interior 3D Shot.

**WE BUILD WITH VALUE**





Kids Bedroom Interior 3D Shot.



Kids Bedroom Interior 3D Shot.

**WE BUILD WITH VALUE**



Living Interior 3D Shot.



Living Interior 3D Shot.

**WE BUILD WITH VALUE**





Living Interior 3D Shot.



Living Interior 3D Shot.

**WE BUILD WITH VALUE**



Living Interior 3D Shot.



Living Interior 3D Shot.

**WE BUILD WITH VALUE**





Kids Bedroom Interior 3D Shot.



Kids Bedroom Interior 3D Shot.

**WE BUILD WITH VALUE**



Kids Bedroom Interior 3D Shot.



Kids Bedroom Interior 3D Shot.

**WE BUILD WITH VALUE**



## Interior design for a reception. (Mehala, Egypt)

Scope of work is to redesign the flat reception, Interior 3D shots and prepare full S.D for the interior design.



Reception Interior 3D Shot.



Reception Interior 3D Shot.

**WE BUILD WITH VALUE**



Reception Interior 3D Shot.



Reception Interior 3D Shot.

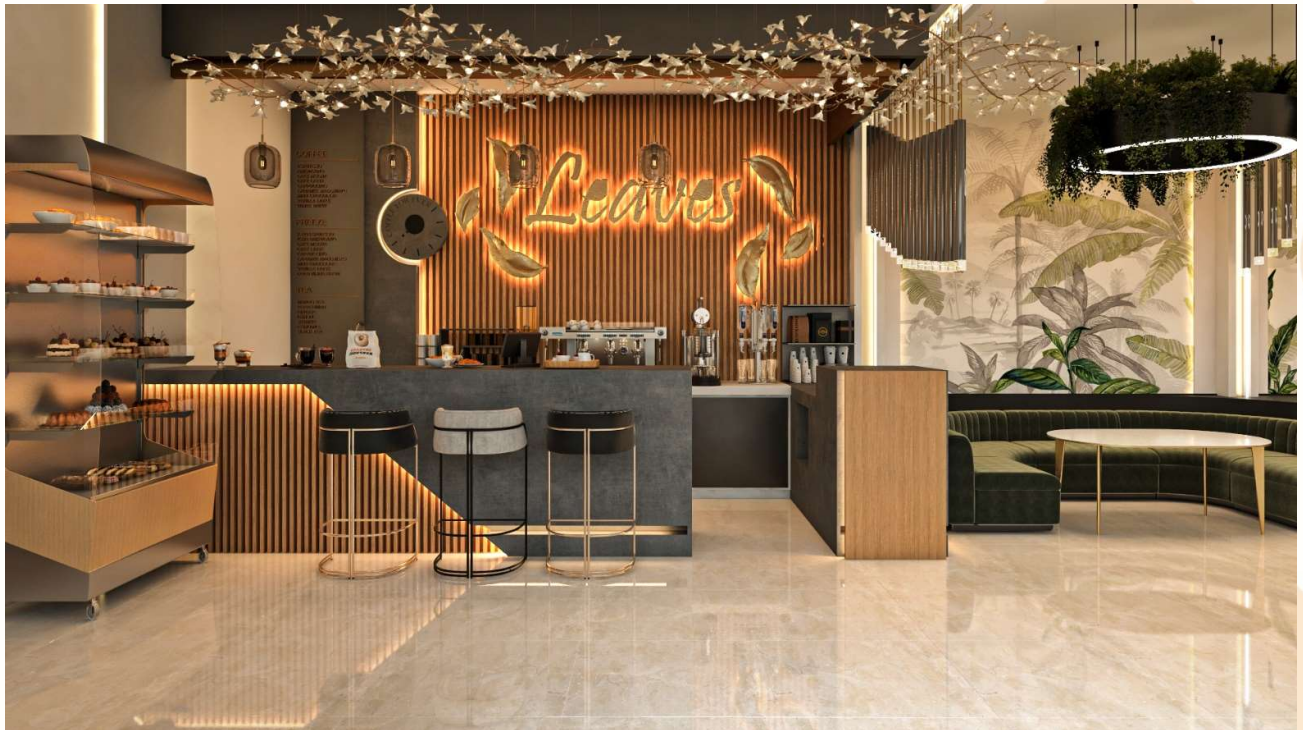
**WE BUILD WITH VALUE**



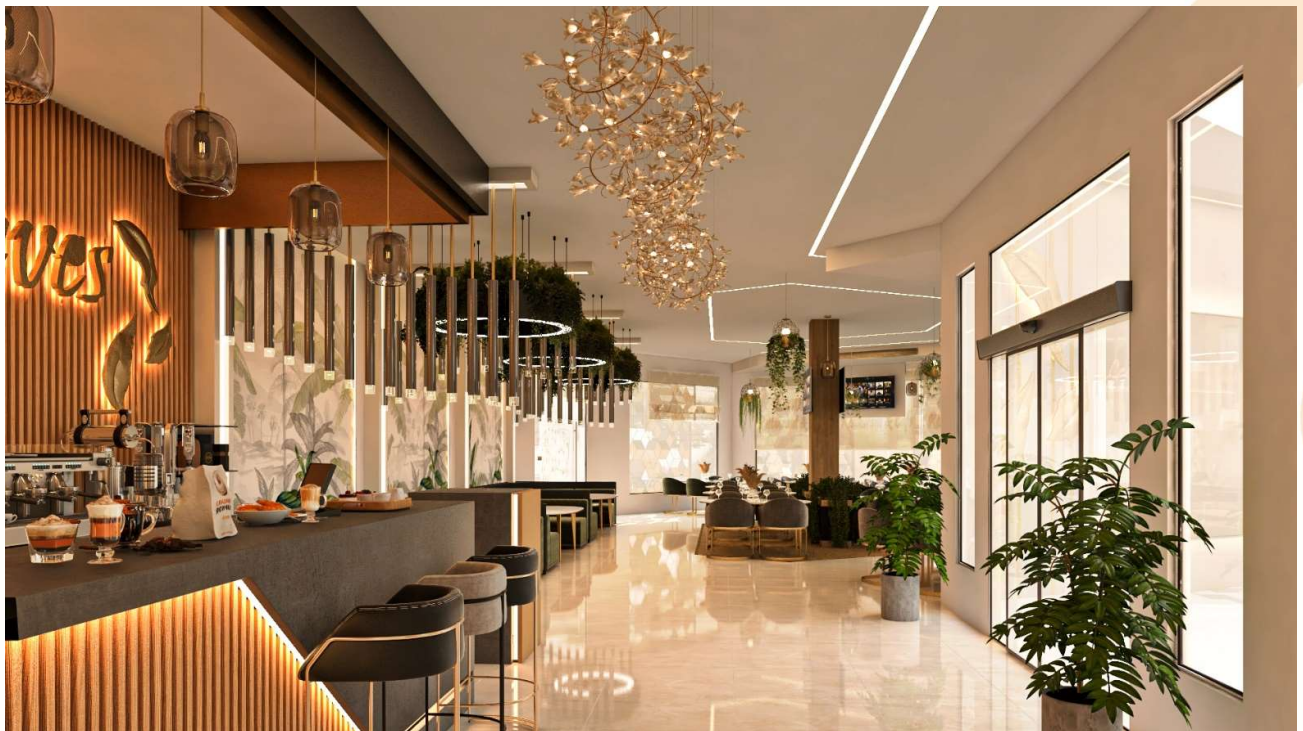


## Interior design for Leaves Cafe. (Sadat city, Egypt)

Scope of work is Interior design for the Cafe and to prepare shop drawings for the interior design details.



Interior 3D Shot.



Interior 3D Shot.

**WE BUILD WITH VALUE**





Interior 3D Shot.



Interior 3D Shot.

**WE BUILD WITH VALUE**





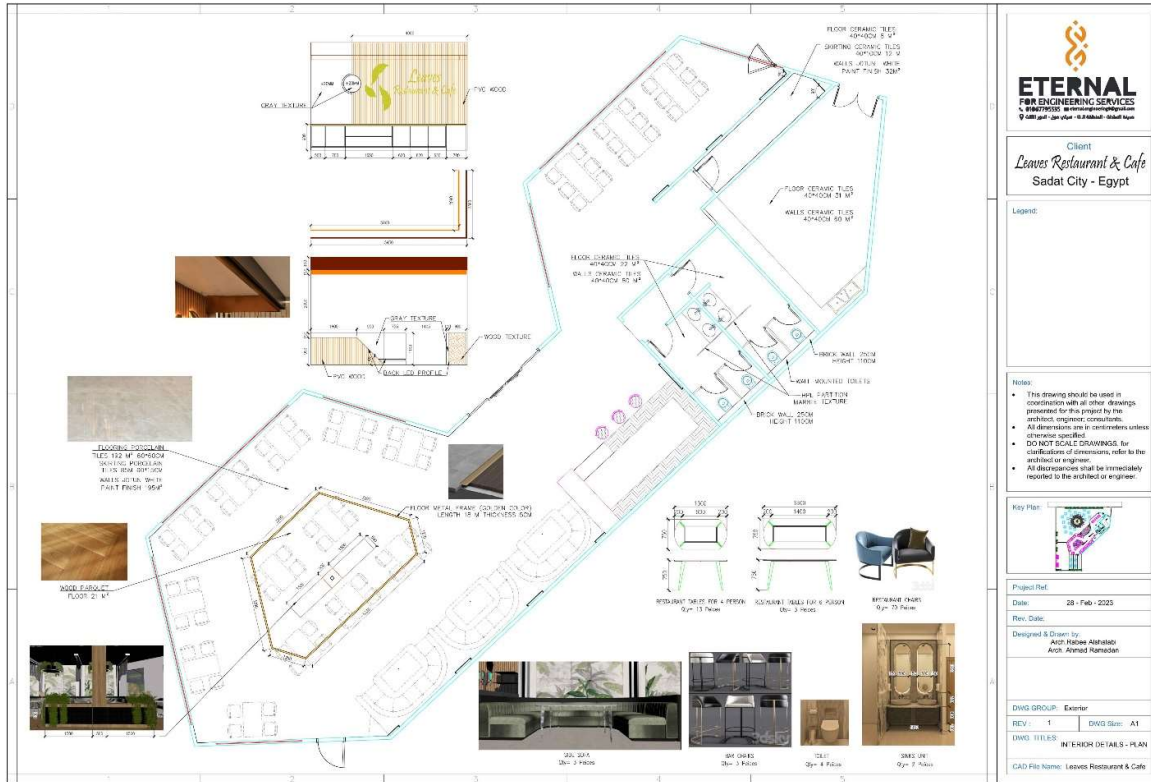
Interior 3D Shot.



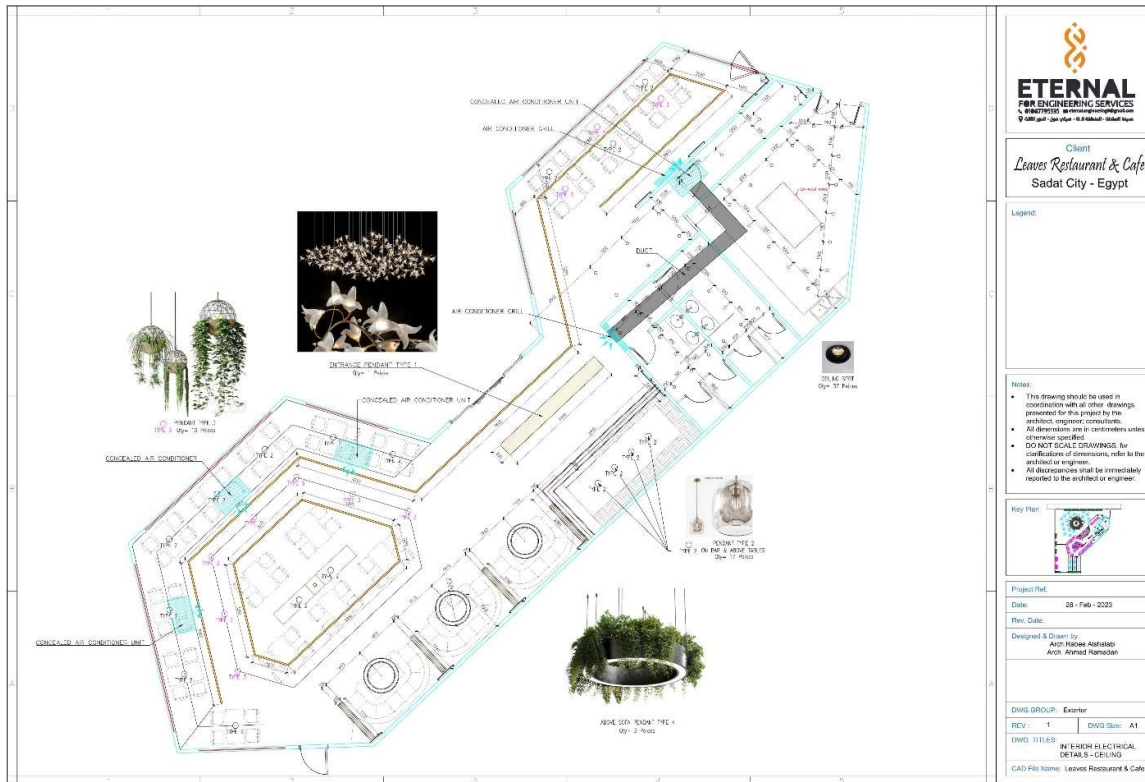
Interior 3D Shot.

**WE BUILD WITH VALUE**





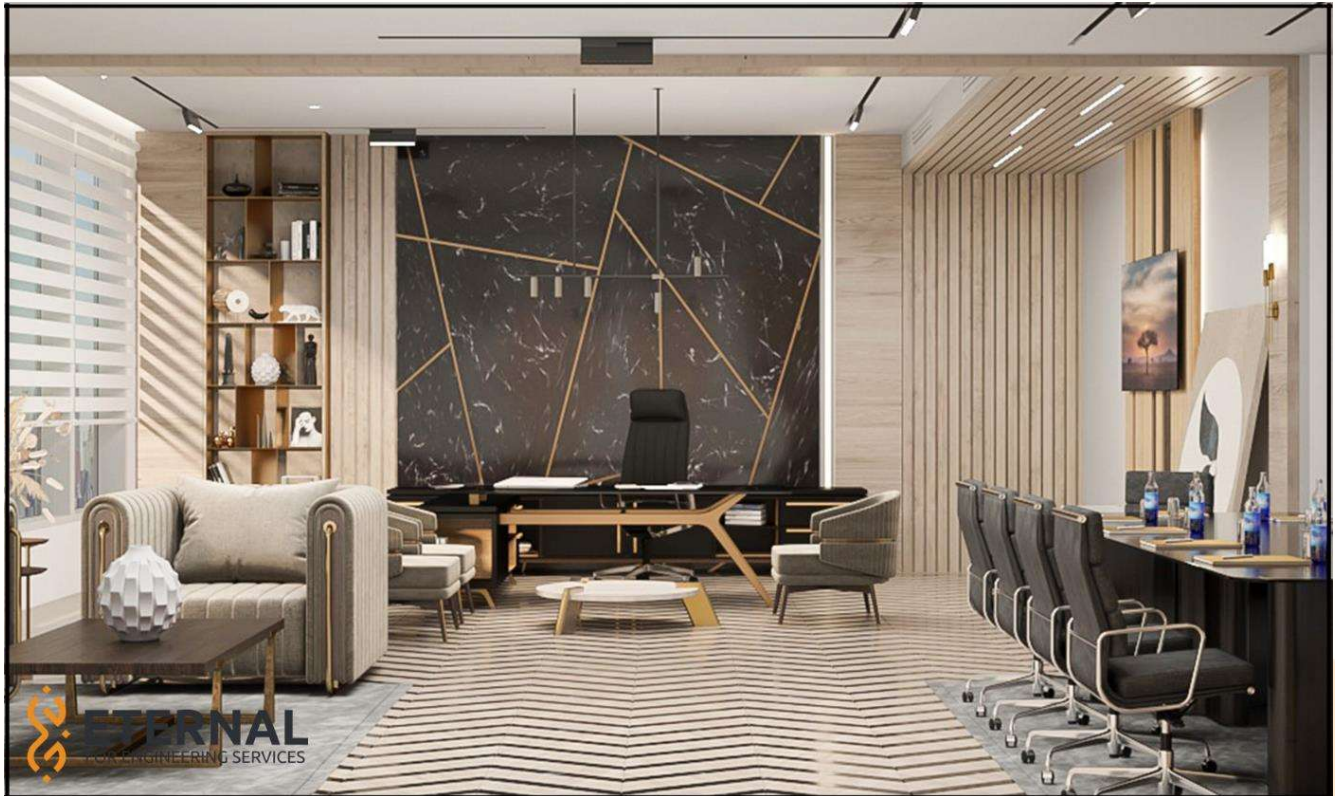
Interior Details (Shop Drawing).



Ceiling Electrical Details (Shop Drawing).

**WE BUILD WITH VALUE**

**Interior design for Administration Building (CEO Office). (Sadat city, Egypt)**



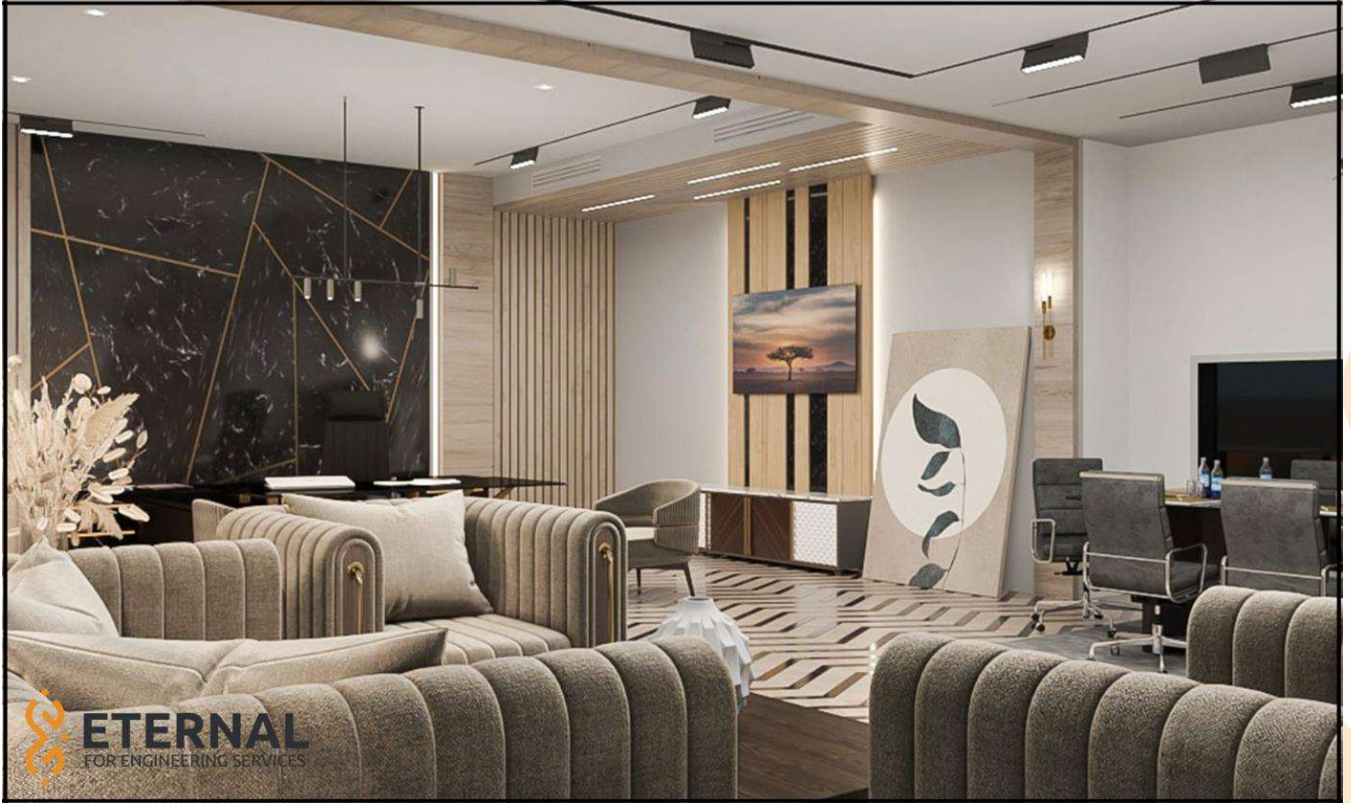
Interior 3D Shot.



Interior 3D Shot.

**WE BUILD WITH VALUE**





Interior 3D Shot.



Interior 3D Shot.

**WE BUILD WITH VALUE**

## Interior design for duplex apartment. (Sadat city, Egypt)



Interior 3D Shot.



Interior 3D Shot.

**WE BUILD WITH VALUE**





Interior 3D Shot.



Interior 3D Shot.

**WE BUILD WITH VALUE**



Interior 3D Shot.



Interior 3D Shot.

**WE BUILD WITH VALUE**